

Evaluation of organic miticides against twospotted spider mite and Lewis mite

M. A. Aghaee and C. T. Koubek

Spray dates	Lewis: 21 Mar, 28 Mar; TSSM: 3 Apr, 12 Apr
Sampling dates	Lewis: 21 Mar, 24 Mar, 28 Mar, 1 Apr, 4 Apr; TSSM: 3 Apr, 7 Apr, 11 Apr, 14 Apr, 18 Apr
Backpack sprayer specs	8 hollow cone Teejet nozzles calibrated to deliver 150 GPA at 60 psi
Trial design	Randomized complete block; replicated 4 times; 4 × 10 feet plot area
Location	Lewis: Talley Farms Arroyo Grande, CA; TSSM: Cal Poly Strawberry Center Field 35a
Cultivar	Lewis: Monterey; TSSM: Cabrillo
Data collection	10 leaflets collected in paper bags and counted within 4 days of collection

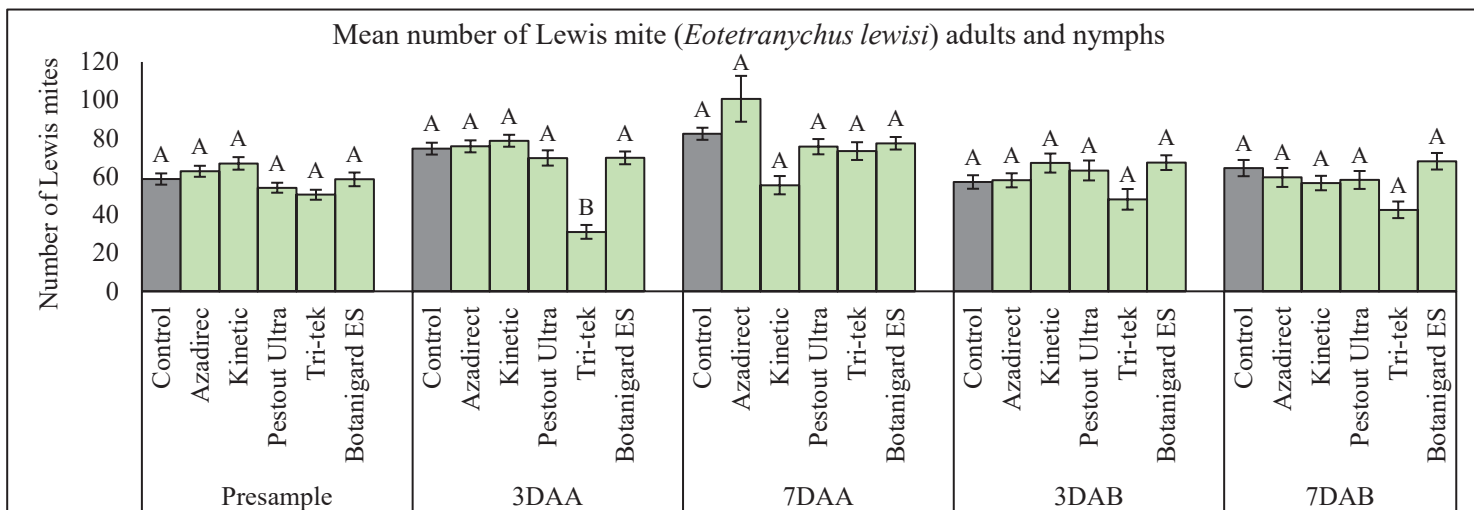


Figure 1. *Eotetranychus* nymph and adult combined counts at the following sample times: presample, 3 and 7 days after first spray (DAA) and 3 and 7 days after second spray (DAB). All products were sprayed at the following rates: Azadirect 32 fl oz/A, Kinetic 18 fl oz/A, PestOut Ultra 192 fl oz/A, Tri-tek 384 fl oz/A, and Botanigard ES 48 fl oz/A. MixWell was added to all treatments and buffered to pH to 5.5. Data was analyzed with an ANOVA and Tukey means separation with a negative binomial distribution using Proc Glimmix in SAS 9.4®. Error bars represent standard error of the mean. Means that do not share the same letter are significantly different ($\alpha=0.05$).

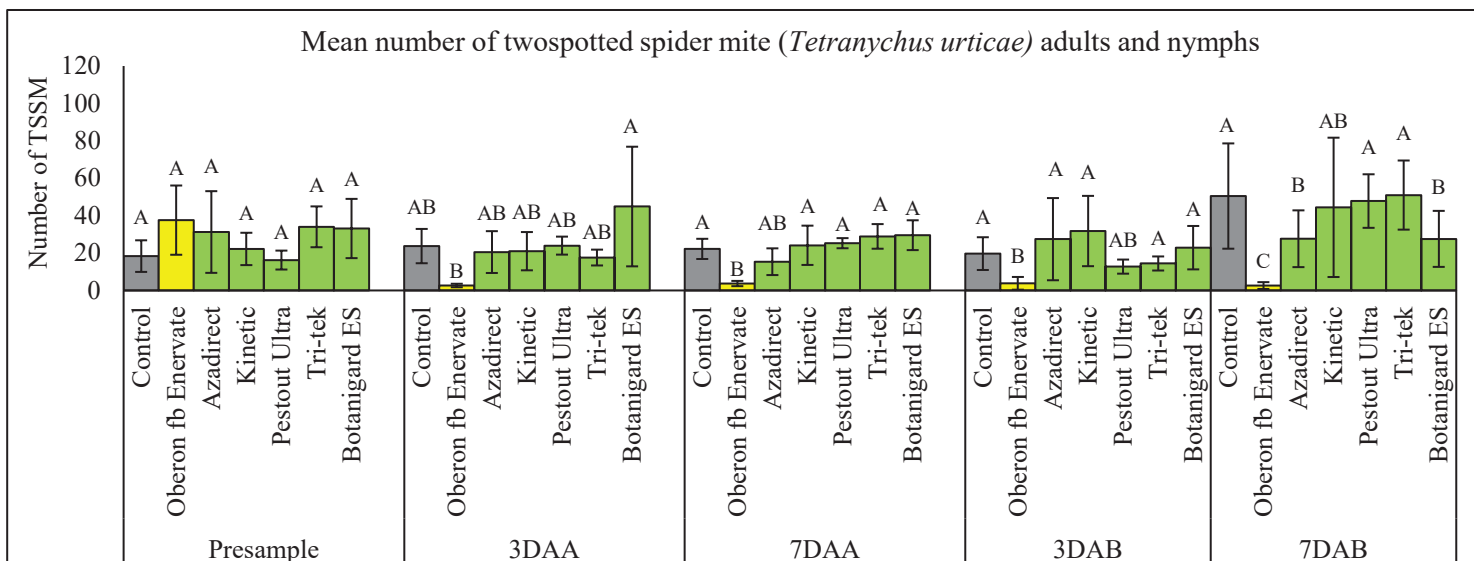


Figure 2. *Tetranychus urticae* nymph and adult combined counts at the following sample times: presample, 3 and 7 days after first spray (DAA) and 3 and 7 days after second spray (DAB). The grower standard rotation Oberon 2SC was sprayed at 3.5 fl oz/ac followed by Enervate 4SC at 16 fl oz per acre. All products were sprayed at the following rates: Azadirect 32 fl oz/A, Kinetic 18 fl oz/A, PestOut Ultra 192 fl oz/A, Tri-tek 384 fl oz/A, and Botanigard ES 48 fl oz/A. Dyne-Amic was tank mixed with the grower standard at a 1% v/v at 150 GPA. MixWell was added to all treatments and buffered to pH to 5.5. Data was analyzed with an ANOVA and Tukey means separation using Proc Glimmix in SAS 9.4® with negative binomial. Data from 7DAB was analyzed using a Poisson distribution due to lack of convergence. Error bars represent standard error of the mean. Means that do not share the same letter are significantly different ($\alpha=0.05$).

