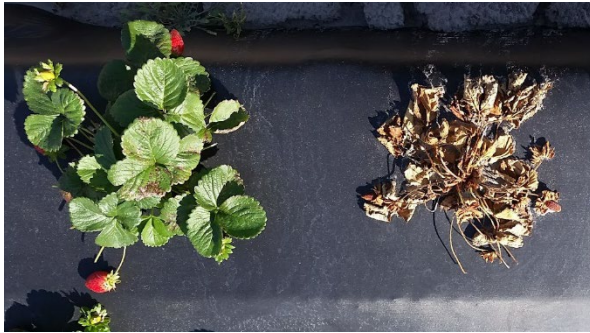


How to Submit a Sample and Diagnostic Updates

Shashika S. Hewavitharana and Gerald Holmes

Instructions on how to properly collect, package, and deliver a strawberry plant sample

- *Sample plants that show symptoms.* It is harder to find the pathogens in dead plant material because of all the other secondary organisms present. Include 2-3 plants that show different stages of the disease (mild to severe).



Too healthy



Too decayed



Just right

- *Send the entire plant.* Even if you see symptoms in leaves, the pathogen can be infecting the roots or crown. Please **don't** send a large amount of soil.
- *Soil samples.* Due to limitations of time and resources, we are unable to process soil samples at this time. We can direct you to other diagnostic labs upon request.
- *Take photos.* It is helpful for us to diagnose the disease if you can send us photos of the symptoms in the field that show the distribution of the problem in the field. You can take photos with your phones and email those to us at shewavit@calpoly.edu
- *Fill out the submission form.* The plant disease problem submission form is now available online at <https://strawberry.calpoly.edu/strawberry-disease-information-form>
 - Each sample that has a different problem needs a separate form.
 - Provide as much information as you can. Information you provide helps us diagnose the problem.
- *Submit your sample.*
 - Package your sample properly in a plastic bag. Do not use paper bags for leaf samples as these dry out quickly.
 - Local samples: Drop off at the address below.

- *Ship your sample:*
 - Please ship the sample on the same day it was collected.
 - If you are unable to ship the sample on the same day, store the bagged sample in the refrigerator. Fresh samples are better for diagnosis.
 - If possible, use a cooler with ice packs during transit. Avoid direct sunlight on the sample during transit.
 - It is better to send us the samples early in the week. Please avoid shipping on Fridays or before holidays.
 - Label your package ‘perishable plants’.
 - Shipping address:

**Cal Poly Strawberry Center
1 Grand Ave,
Technology Park,
building 83, STE 1B
San Luis Obispo, CA 93407**

Monday-Friday 8.00 am-4.30 pm

- *Diagnostic summary 2019 and 2020 (Jan-August):*

Disease/pest/disorder	Year	
	2019	2020
Abiotic/pest problems	38	35
Macrophomina crown rot	22	29
Phytophthora crown rot	16	9
Fusarium wilt	9	22
Verticillium wilt	5	17
Zythia dry calyx, leaf blotch, crown infection	4	9
Powdery mildew	1	0
Anthracnose	1	2
Total number of samples	86	122