

Monday October 20, 2014

VIII The Spread of
Homo sapiens sapiens
E. Colonization of
the New World



CAL POLY
SAN LUIS OBISPO

SPECIAL SCREENING

BECOMING CALIFORNIA

Environmental Change on America's Western Edge

OCT. 23, 2014 SPANOS THEATRE
6:30-8:30 P.M.

Narrated by **Jane Fonda**

Original Music by **Pat Metheny**

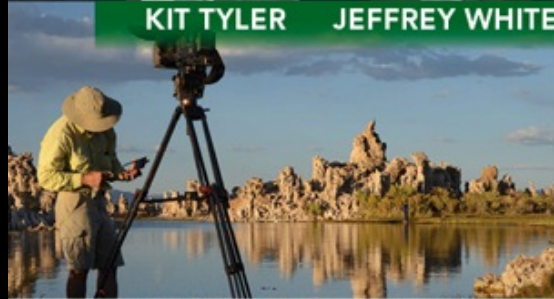
PLUS A LIVE Q&A SESSION WITH PRODUCERS:



KIT TYLER



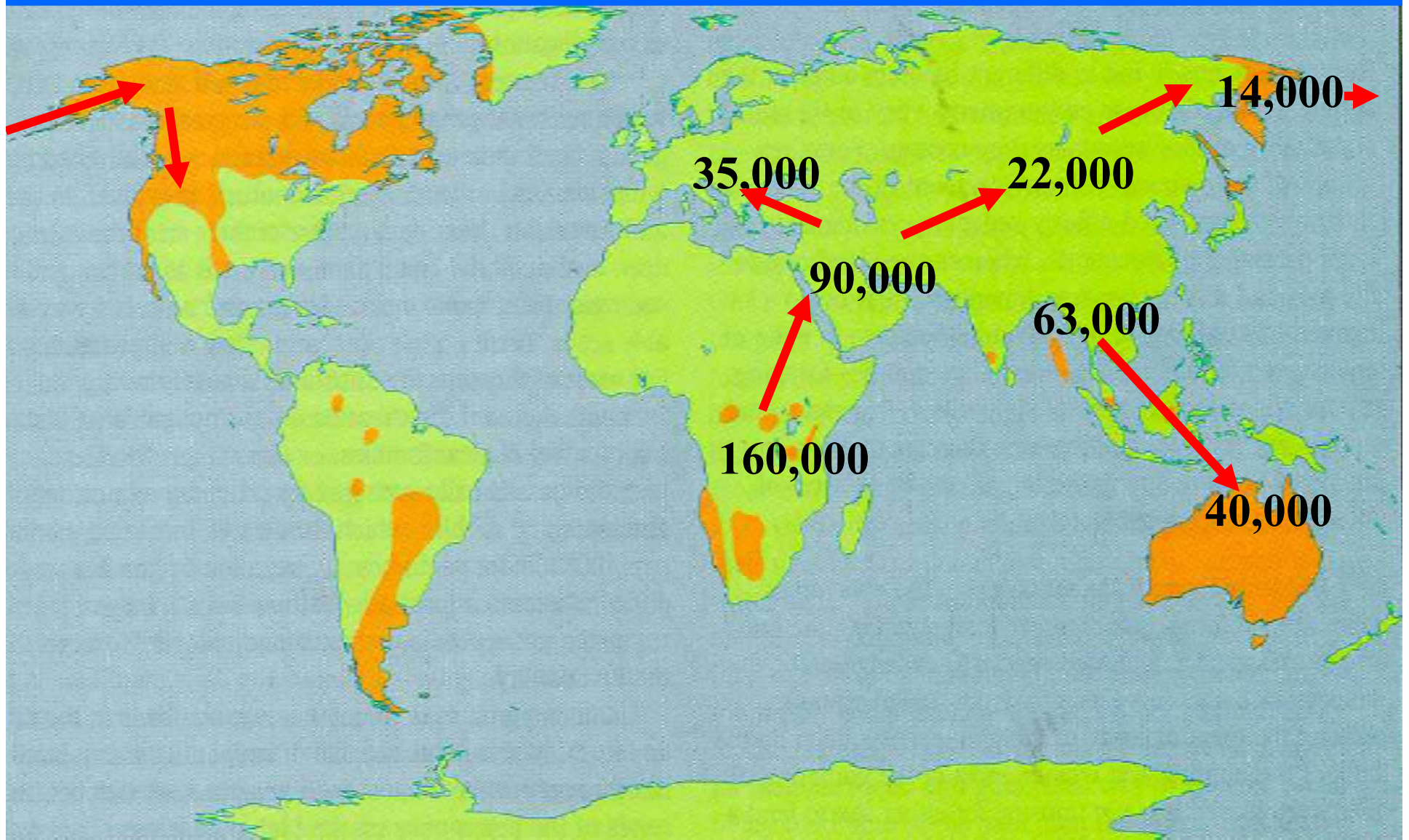
JEFFREY WHITE



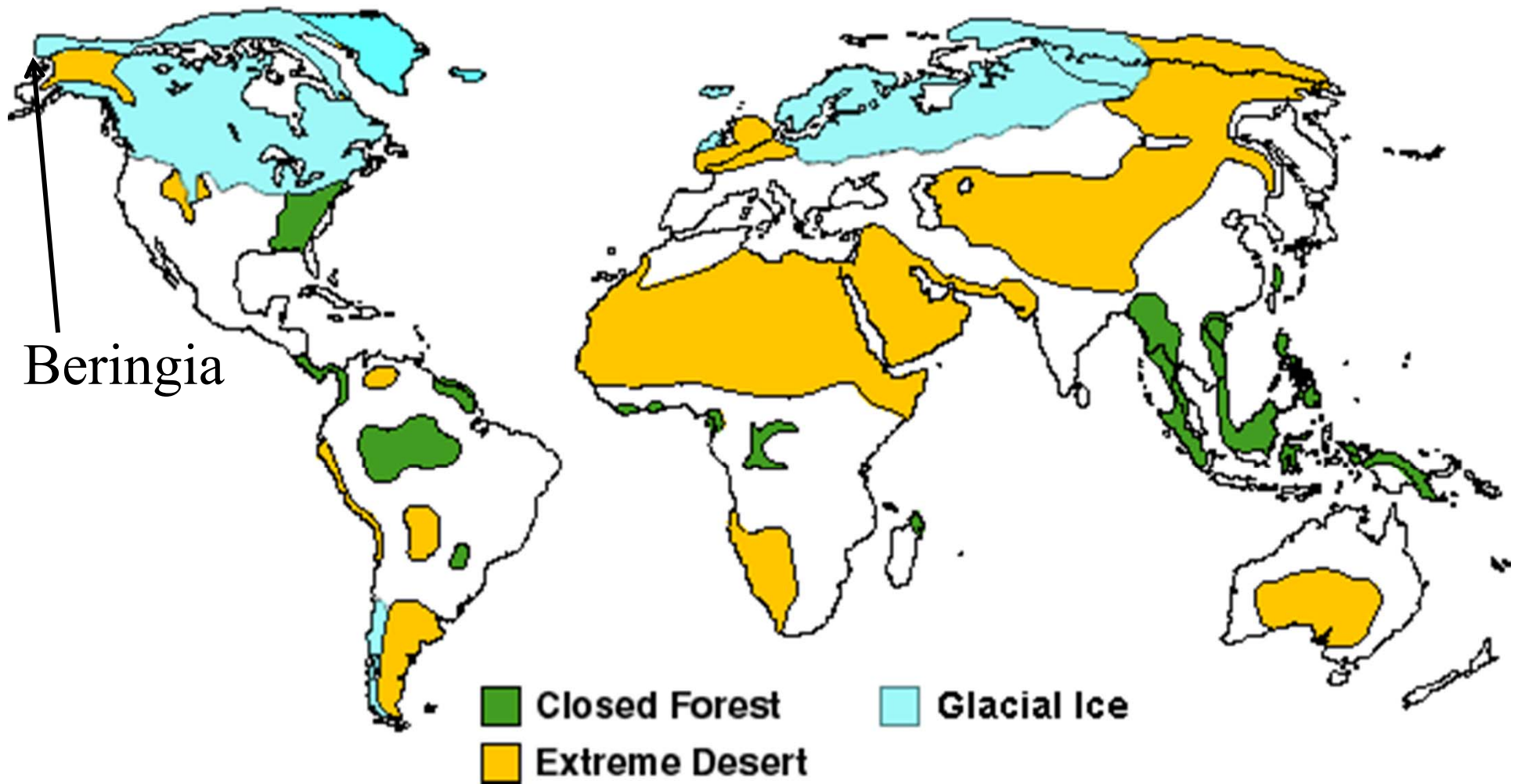
FREE AND OPEN TO THE PUBLIC.

Funded by the College of Liberal Arts' Lottery Speakers Fund. Sponsored by Cal Poly's Social Sciences Department, Biological Sciences Department, and College of Liberal Arts. For more information, call 805-756-2752.

COLONIZATION



Last Glacial Maximum: 20,000 Years B.P.

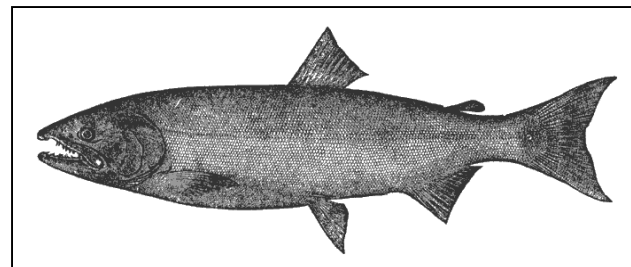




Uski, 13,000 BP
 Duktai 14,000 BP
 Remains of Megafauna

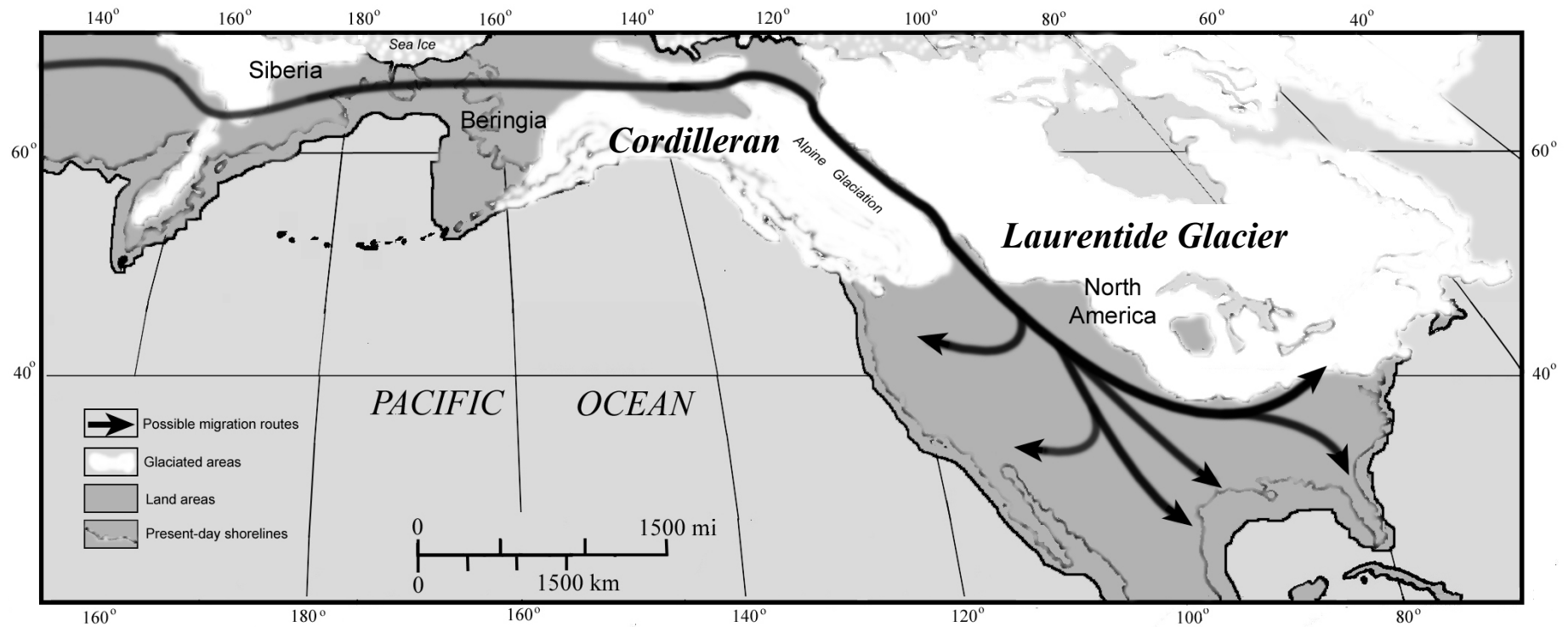


Salmon

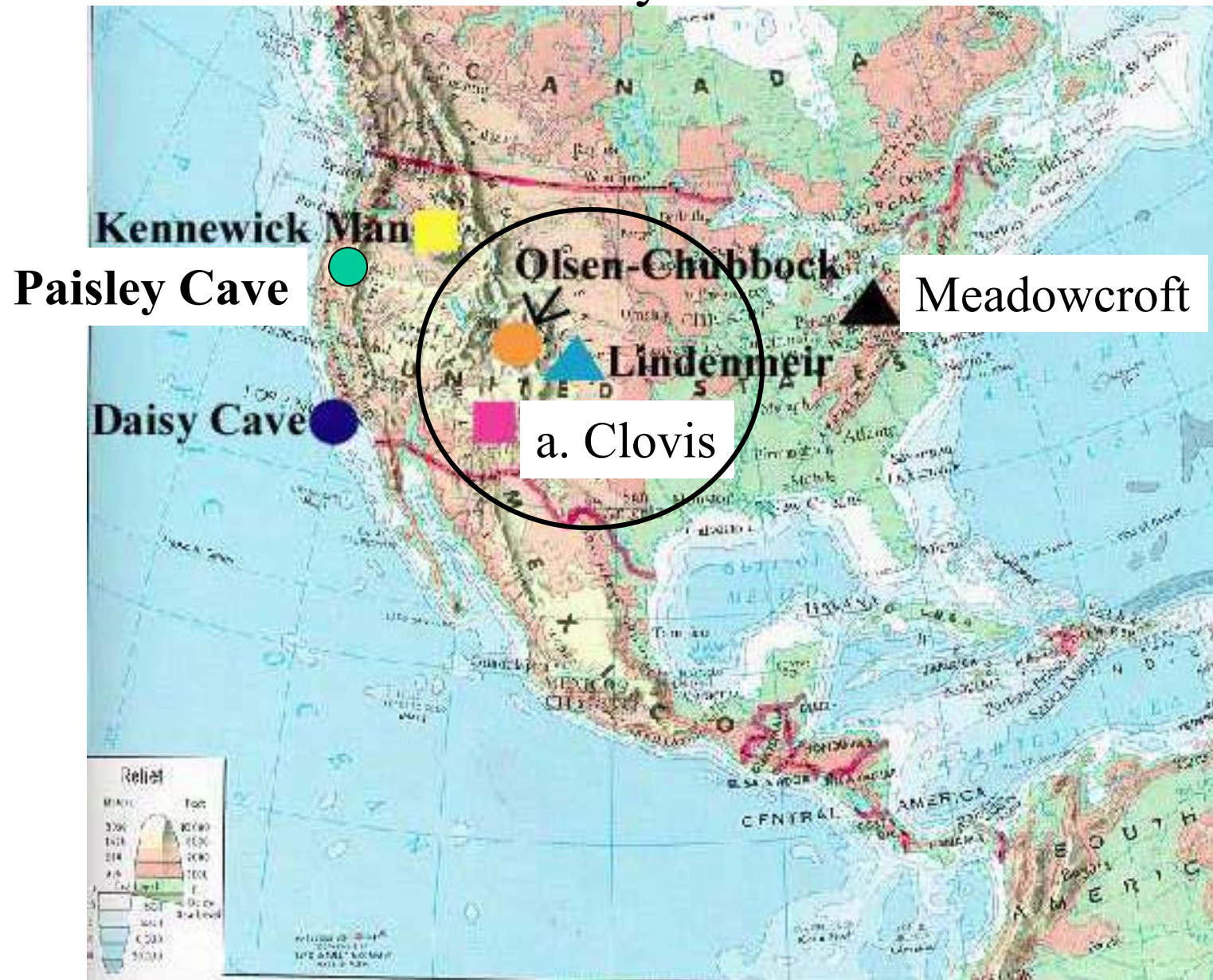


Microblades

15,000 years ago the North American ice sheet splits into two
AND the Coast becomes Ice-Free



Clovis and Other Early Sites in North America

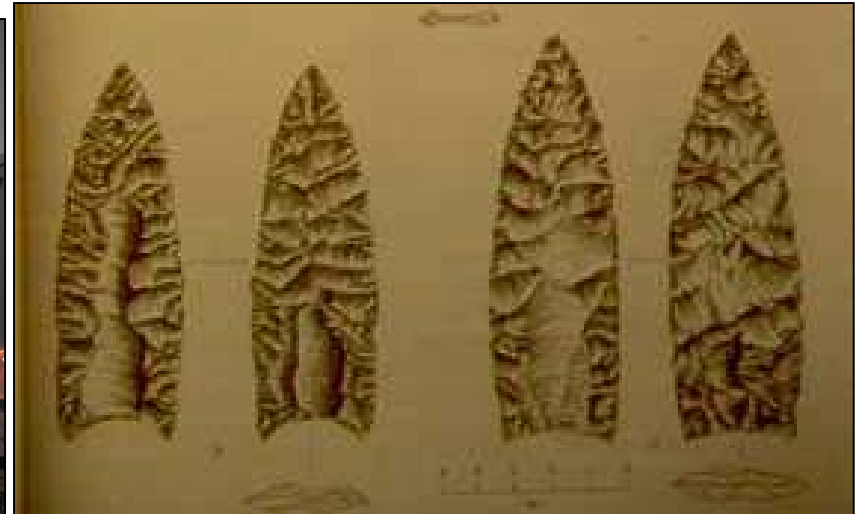


Interior Big Game Hunters (Paleoindian)

(a) Clovis Culture 13,300-12,900 B.P.

Large Fluted Projectile points

Mammoth bones



Archaeological concepts

Archaeological culture: V. Gordon Childe, defined an archaeological culture as “ an assemblage of artifacts that recur repeatedly associated together in dwellings of the same kind and with burials of the same rite. The arbitrary peculiarities of implements, weapons, ornaments, houses, burial rites, and ritual objects are assumed to be concrete expressions of the common social traditions that bind together a people.”

Assemblage: a subunit of a culture—a closely related group of artifact types that consistently co-occur

Theories related to Clovis

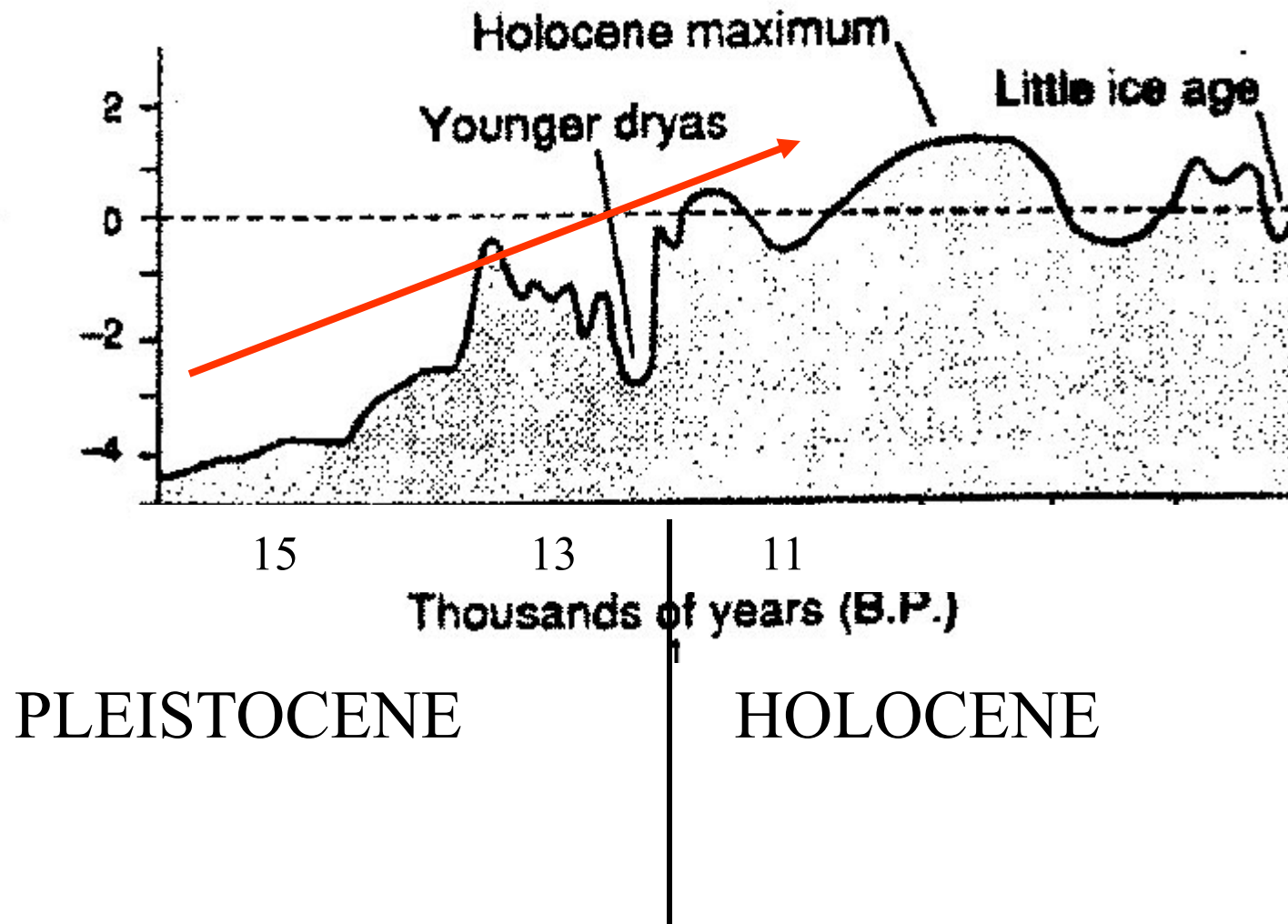
Clovis First!

Overkill:

ii. Paul S. Martin
and the
Pleistocene
Overkill
Hypothesis
Or
Blitzkreig



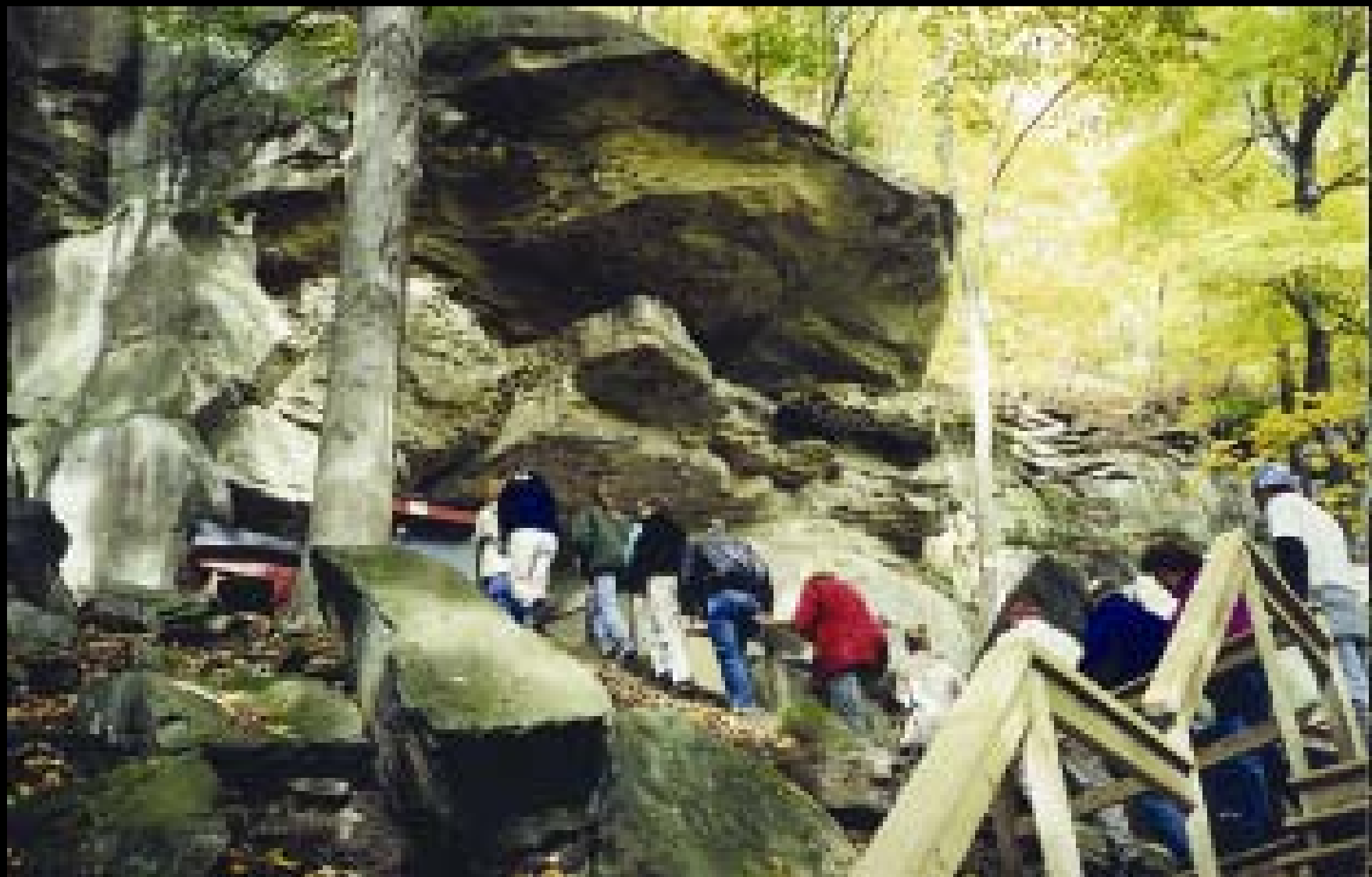
Alternative: Terminal Pleistocene Climate Change (warming)



Challenges to Clovis First: Pre-Clovis in the New World



Challenges to Clovis First: Meadowcroft Rockshelter, Pennsylvania 14,000 BP?????



Coprolite from Paisley Cave: 14,000 BP



Paisley Cave, Central Oregon





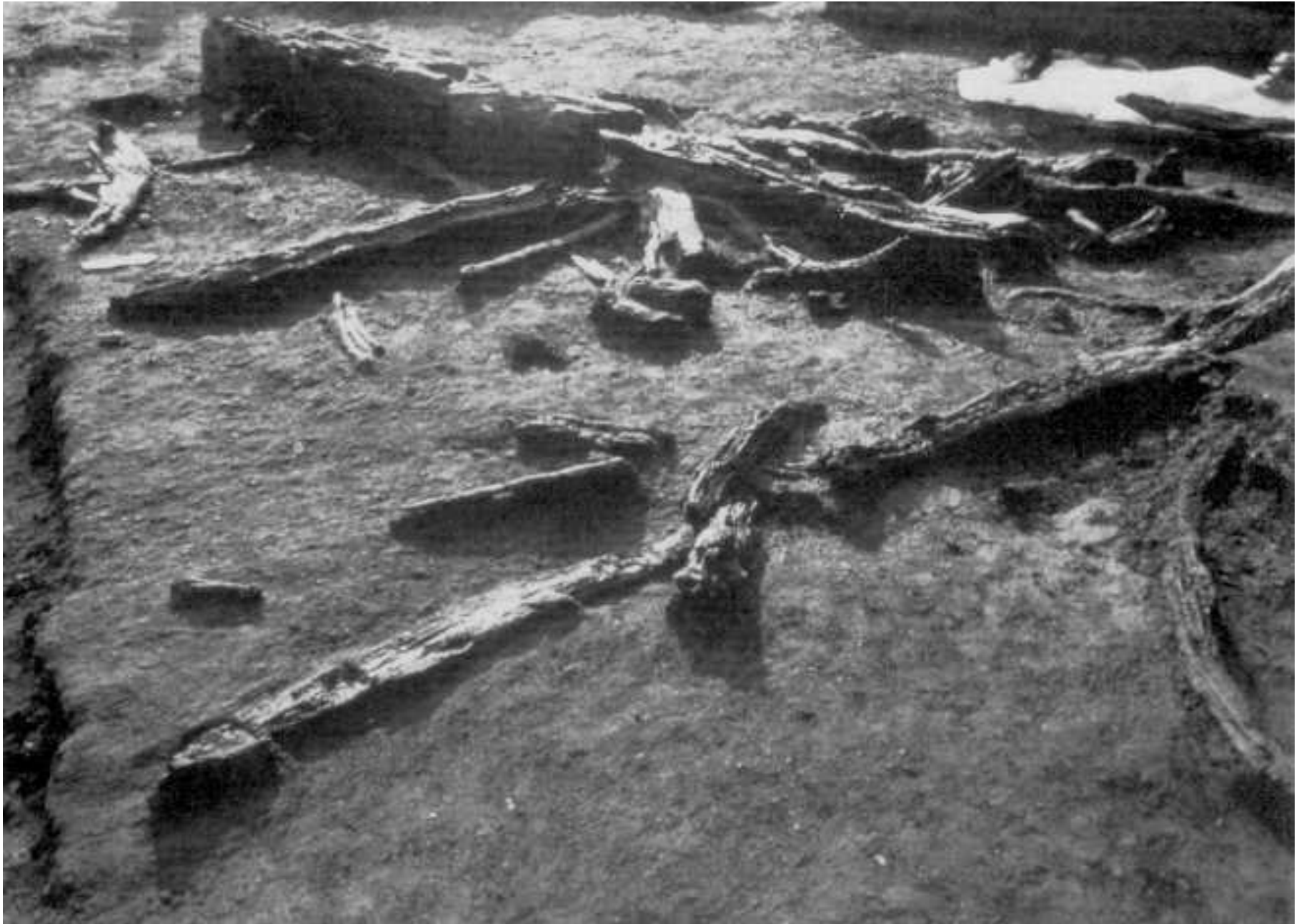


Challenges to Clovis First: Monte Verde!





Remains of wooden Structures at Monte Verde, Chile



MONTE VERDE 14,000 BP



BOLA STONE AND TWINE

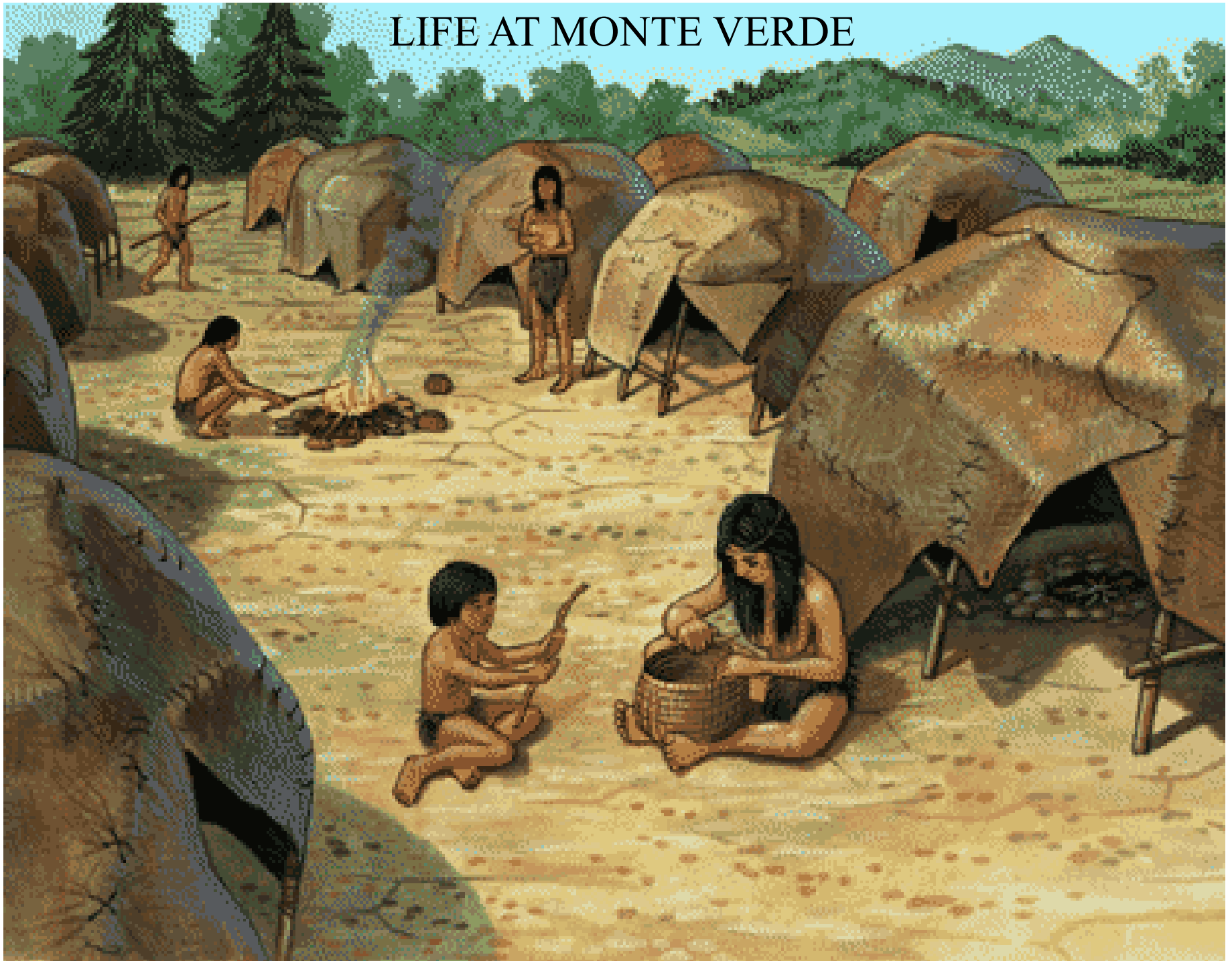


CORDAGE

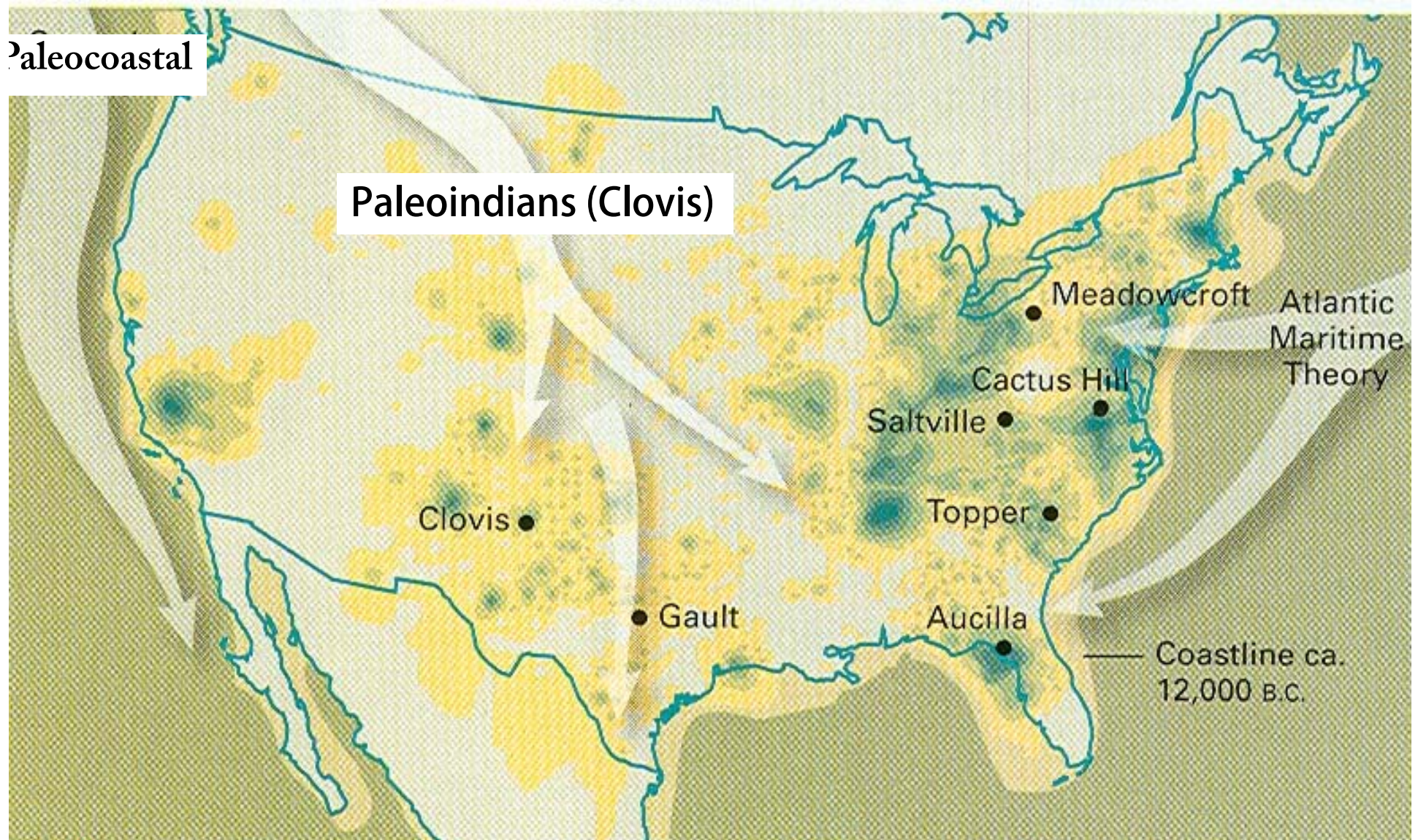


TENT STAKES "IN SITU"

LIFE AT MONTE VERDE



The Coastal Migration Route



The Coastal Route: Pre 12,000 BP Sites on the California Coast



1. Daisy Cave,
San Miguel Island

(12,000 B.P.)



Jon Erlandson at Daisy Cave



2. Arlington Man, Santa Rosa Island



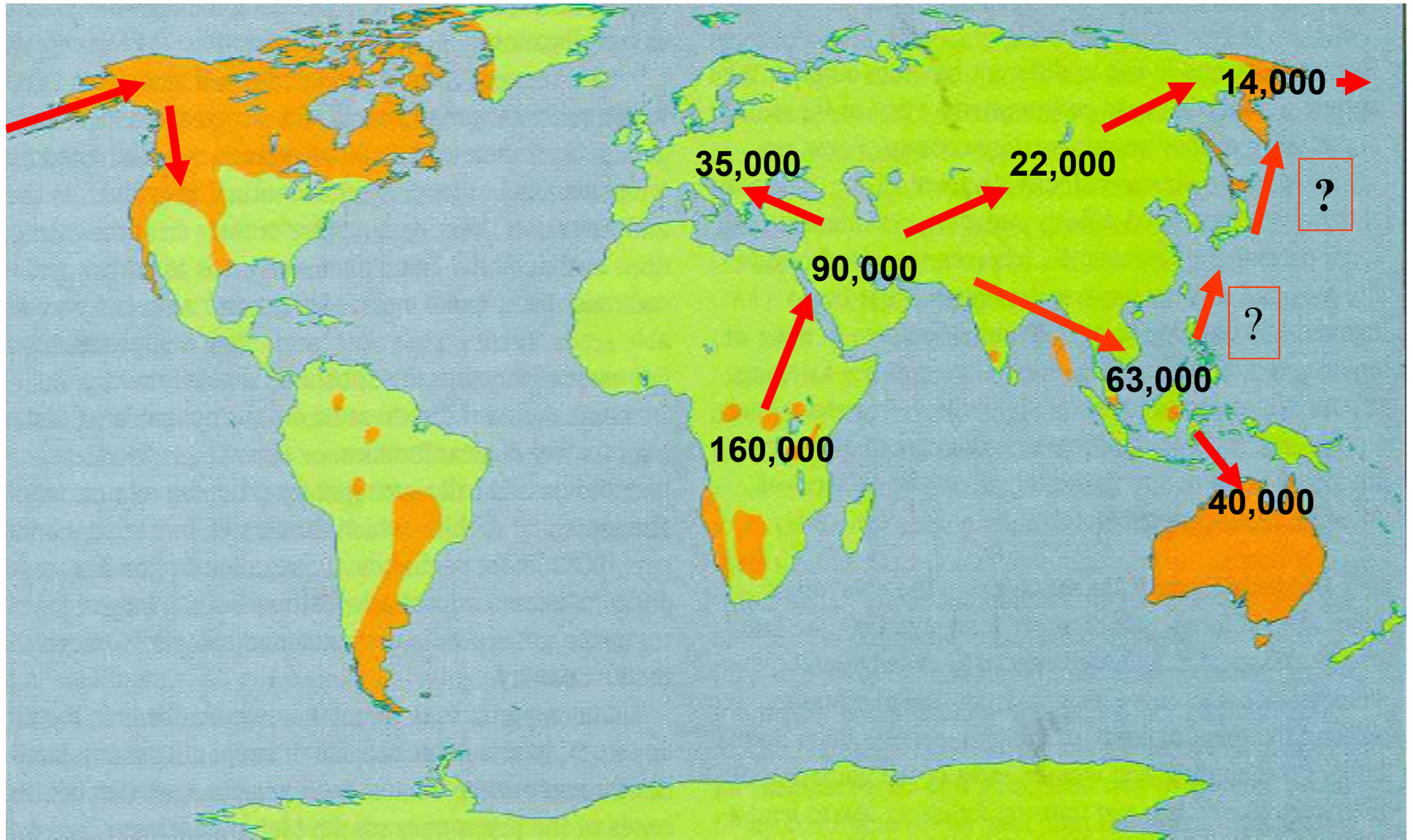
**John
Johnson
With
Remains of
Arlington
Man
13,000-
11,000 BP**



i. Jon Erlandson's Theory: The spread of AMHS out of Africa may have been facilitated by the use of boats



Rapid Spread of AMHS by Boat?



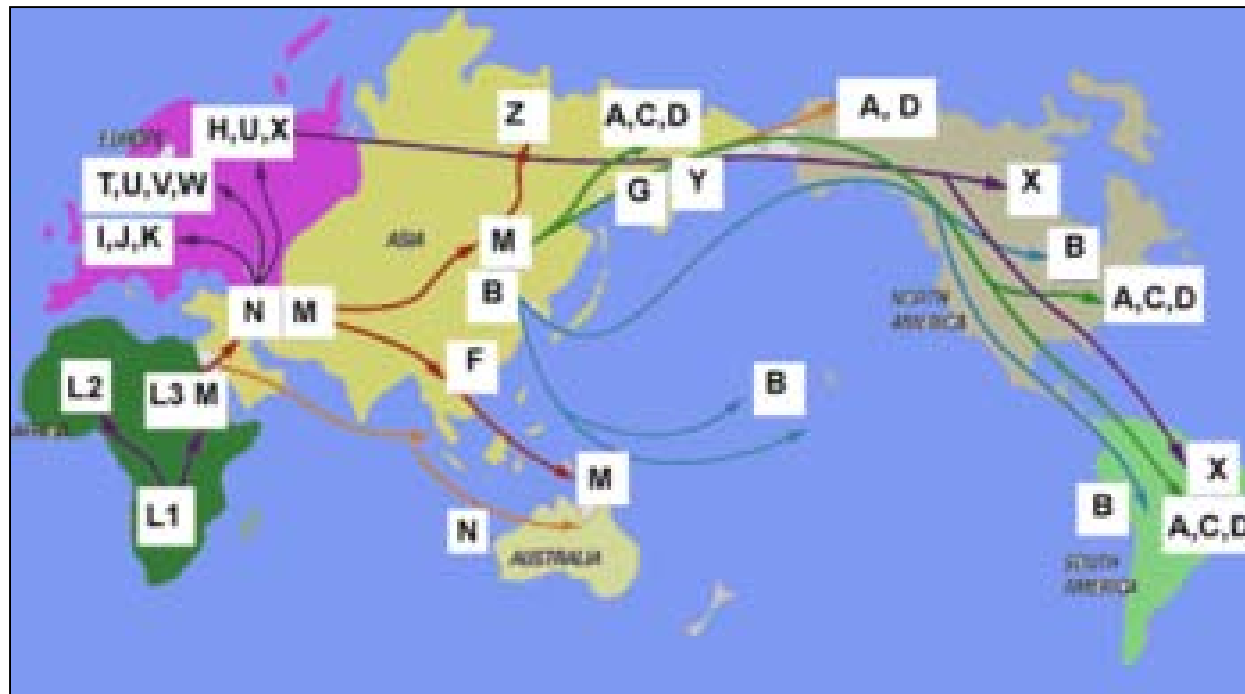
(d) The
Kennewick Man
Controversy
Jim Chatters

Kennewick Man Site



mtDNA from living Native Americans (North and South America)
Shows affiliation with people in Asia- specifically Mongols

Distribution of Some Indigenous mtDNA Haplogroups and one interpretation









The Kennewick Skull: Originally described as “Caucasoid”



Early Artist's Reconstruction of Kennewick Man



N
A
G
P
R
A

NATIVE
AMERICAN
GRAVES
PROTECTION and
REPATRIATION
ACT

Alfred Kroeber

1911



ISHI

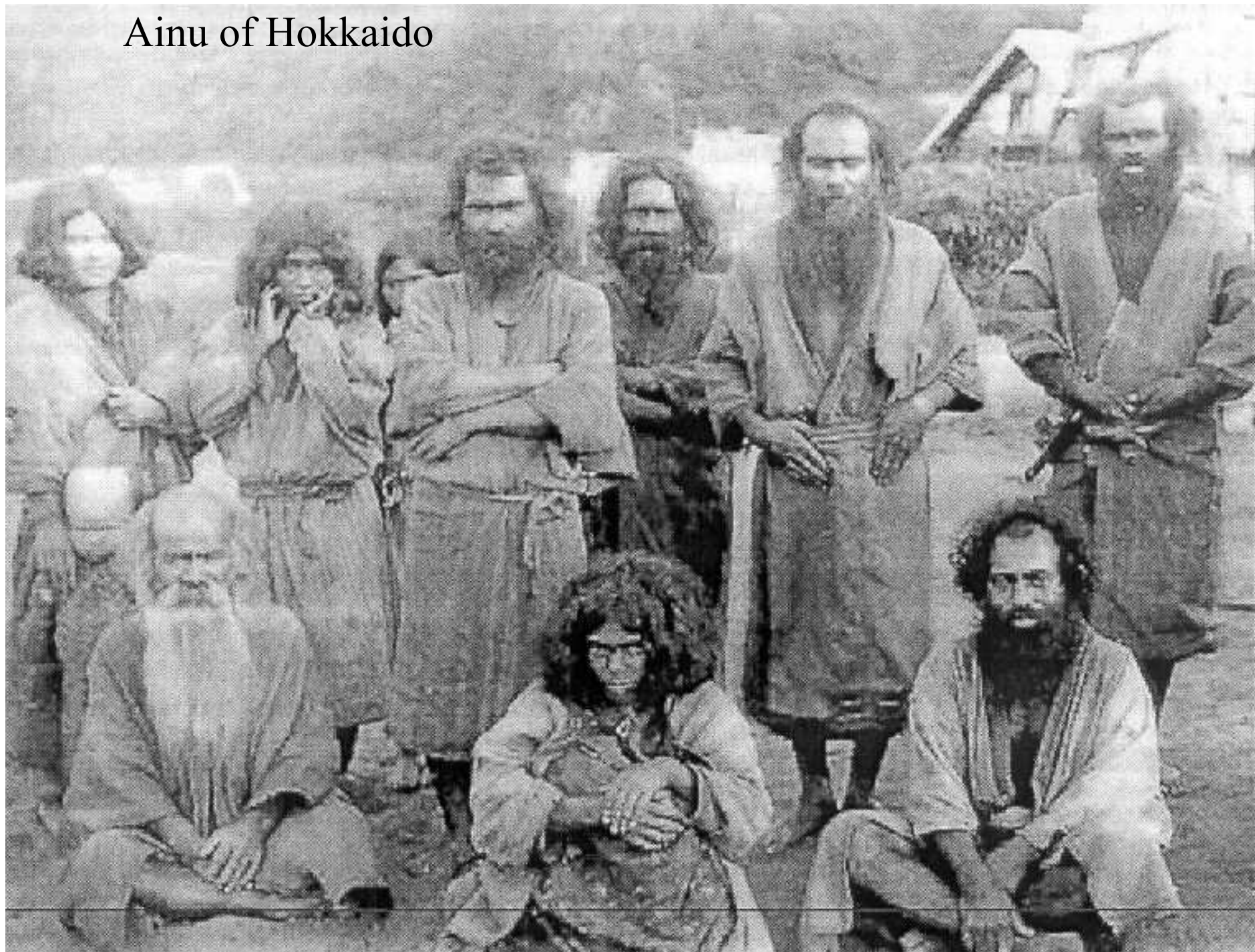
The so-called
“Last Wild
California
Indian”

Early Artist's Reconstruction of Kennewick Man



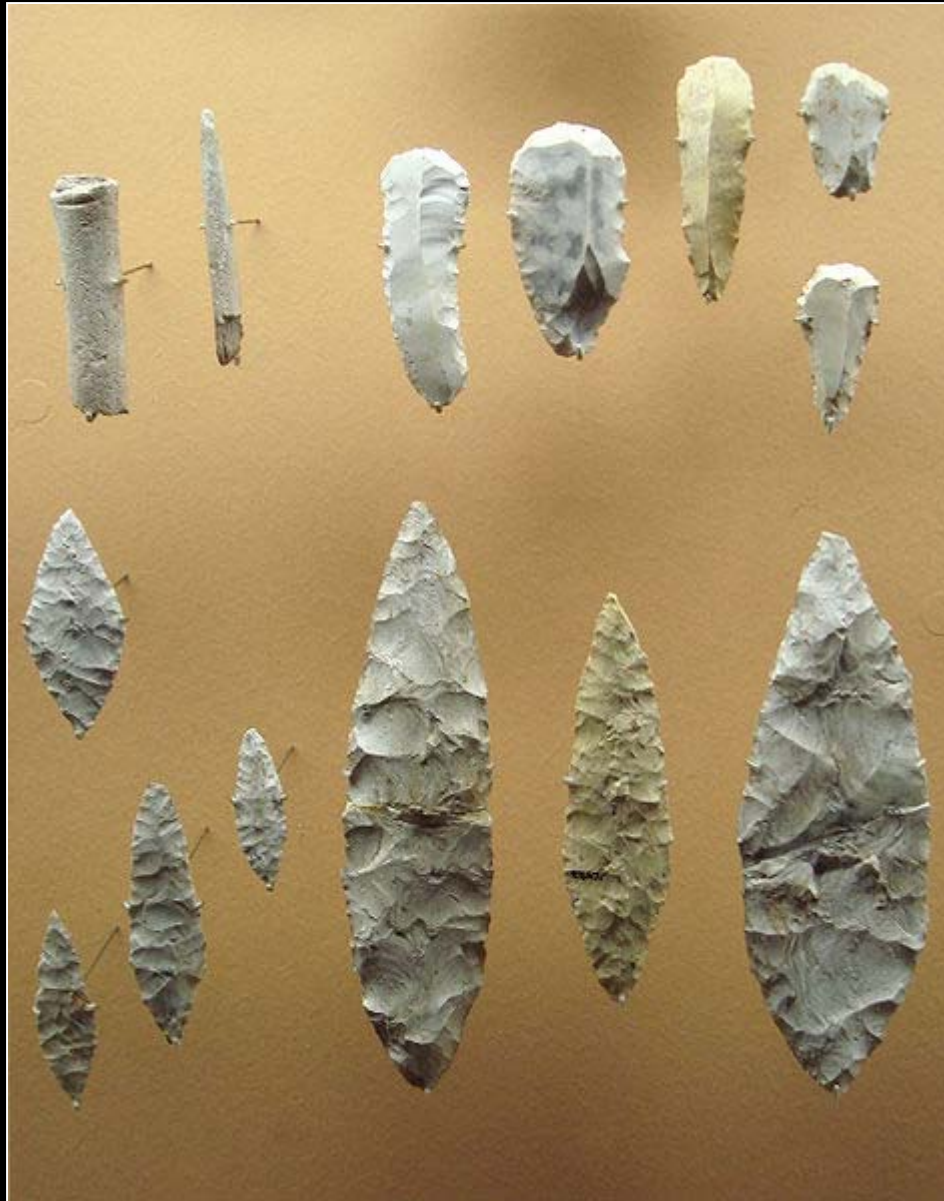


Ainu of Hokkaido



Stanford and Bradley: Colonization from Europe?





Solutrean
Tools
Europe
17,000 BP

Distribution of Fluted Points in North America

