

Striving for a Seamless Transition

Articulation & Transfer Credit

Presented by
Stuart Fryer Statewide Articulation Officer
Basak Williford Academic Progress Counselor
With assistance from
Christine Seely Transfer Credit Analyst



CAL POLY

During Sessions, please...

- ✓ SILENCE CELLPHONES
- ✓ SAVE QUESTIONS TO THE END OF THE SESSION
- ✓ AVOID SIDE CONVERSATIONS
- ✓ COMPLETE OUR SURVEY

...Thank You!



CAL POLY

NO...SERIOUSLY...WHAT */S* ARTICULATION?

Here's the official definition:

“THE PROCESS OF DEVELOPING A FORMAL, BILATERAL AGREEMENT THAT IDENTIFIES COURSES, (OR SEQUENCES OF COURSES), ON A 'SENDING' CAMPUS THAT ARE **COMPARABLE TO, OR ACCEPTABLE IN LIEU OF**, SPECIFIC COURSE REQUIREMENTS AT A 'RECEIVING' CAMPUS.”



WHY DO WE NEED ARTICULATION?

What is it good for?

- TO ENSURE TRANSFER SELECTION CRITERIA MET
- CAL POLY STUDENTS TAKE SUMMER COURSES TO STAY ON TRACK
 - AVENUE FOR STUDENTS TO REAPPLY FOR READMISSION
- MINIMIZE PERMISSION NUMBERS & COURSE
SUBSTITUTION FORMS



HOW IS ARTICULATION ESTABLISHED?

Requests typically take one of three formats:

- **A SPECIFIC CALIFORNIA COMMUNITY COLLEGE COURSE ...**

ALLAN HANCOCK PE 101 WITH CAL POLY KINE 180

- **AN OPEN-ENDED REQUEST...**

VENTURA COLLEGE MATH V22 WITH ANY CAL POLY MATH COURSE

- **A SEQUENCE OF COURSES TO MEET A SINGLE OR SEQUENCE OF CAL POLY COURSES...**

ALLAN HANCOCK PHYS 141 & 142 WITH CAL POLY PHYS 122



THE ARTICULATION OF THE DEAL

Details included:

- REQUEST WILL INCLUDE PDF OF COURSE OUTLINE(S)
- RESPONSE MUST BE RELAYED BY DEPARTMENT CHAIR
- ARTICULATION COURSES ARE *COMPARABLE OR ACCEPTABLE IN LIEU OF EACH OTHER*(75% RULE)



COMMUNICATING THE DECISION

Options of response

- APPROVE REQUEST AS PRESENTED
- APPROVE PENDING THE FOLLOWING AMENDMENTS
- DENY ARTICULATION REQUEST (FOR THE FOLLOWING REASONS)
- OTHER



USING THE ARTICULATION SYSTEM STIMULATING INTER-INSTITUTIONAL STUDENT TRANSFER SYSTEM

assist™ The official transfer and articulation system for California's public colleges and universities

Your transfer resource.

Get the information you need to find the best path to your degree.

[New to ASSIST?](#) [Frequent Questions](#)

Transfer Information

Academic Year:

Institution:

Agreements with Other Institutions:

[View Agreements](#)

[Looking for transferability lists? Select a community college.](#)

© 2019 ASSIST | [Terms Of Use](#) [Support](#)



Striving for a Seamless Transition

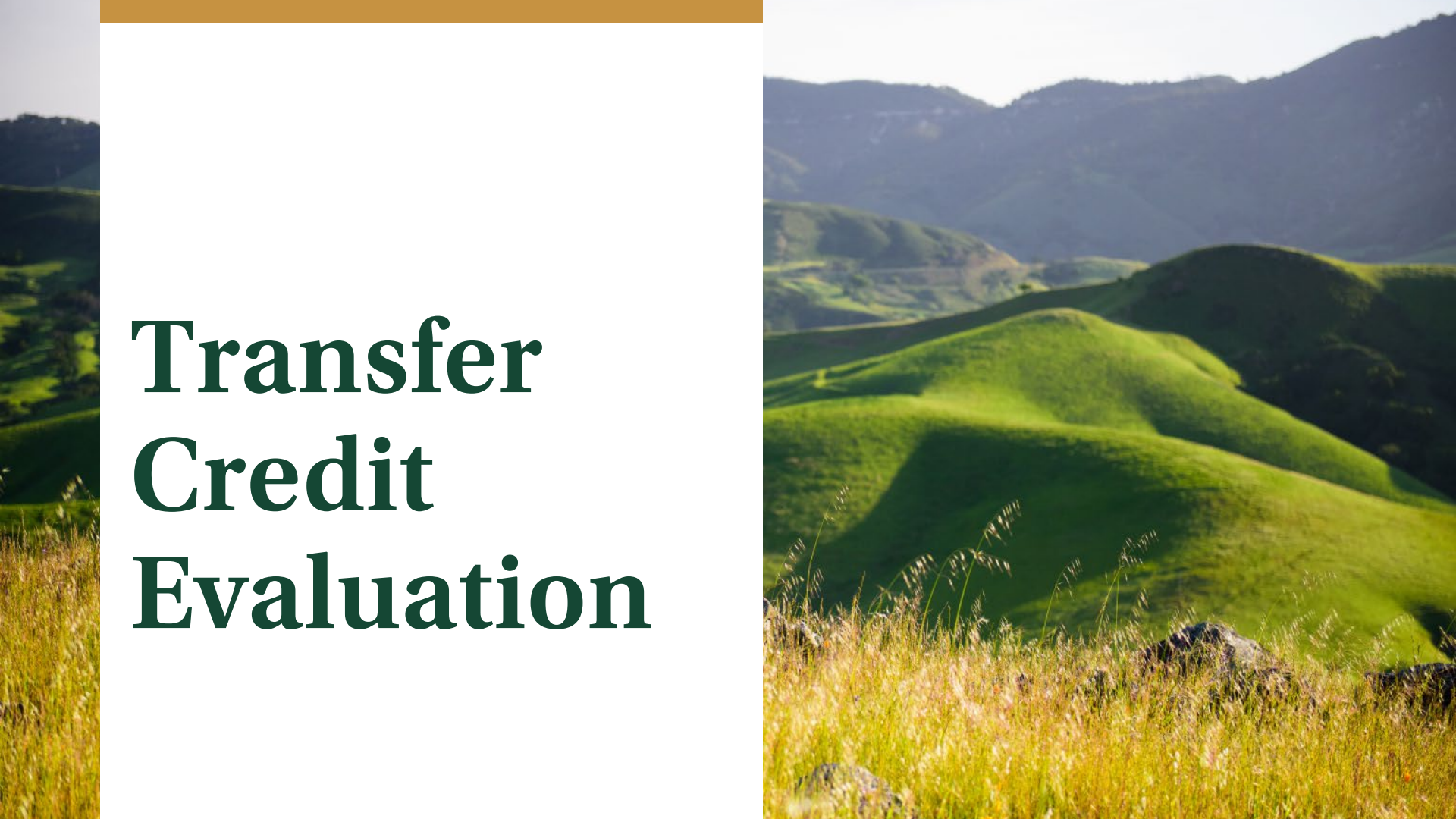
Articulation & Transfer Credit

Presented by
Stuart Fryer Statewide Articulation Officer
Basak Williford Academic Progress Counselor
With assistance from
Christine Seely Transfer Credit Analyst



CAL POLY

Transfer Credit Evaluation



What is Transfer Credit Evaluation?

Transfer credit evaluation is the measurement of comparable prior learning in an accredited College or University (courses, examinations) against the current offerings of Cal Poly, based on the requirements of the student's major and General Education.

GEC2 1TR Humanities Fall Quarter 2019	4.50	A	PHIL 101 SURVEY OF PHILOSOPHY Fall Semester 2015	3.00	A
MATH 119 Precalculus Trigonometry Fall Quarter 2019	4.00	400	MATH 141 PRECALCULUS Spring Semester 2016	5.00	A
GEB1 1TR Geb1 Transfer Lower Division Fall Quarter 2019	3.50	400			
COMS 217 Small Group Communication Fall Quarter 2019	4.00	300	SPCH 102 SMALL GROUP COMMUNICATION Spring Semester 2016	3.00	B
GEA2 1TR Oral Communication Fall Quarter 2019	0.50	300			
PHYS 104 Introductory Physics Fall Quarter 2019	4.00	300	PHYS 110 INTRODUCTORY PHYSICS Summer Semester 2016	3.00	B
GEB3 1TR Physical Science Fall Quarter 2019	0.50	300			
ENGL 148 Reasoning/Argument/Prof Writng Fall Quarter 2019	4.00	200	ENGL 103 CRITICAL THINKING-COMPOSITION Fall Semester 2016	3.00	C



Transfer Evaluation Timelines

Mid-to-Late March :

We start our work on Transfers and Freshmen on Curriculum Sheets and/or run What if DPRs.

July 15: Admissions Deadline for final transcripts!

August 12: OUR STRICT DEADLINE!!!
Transfer
REGISTRATION!!

July 1 : Big AP exam File arrives. Matriculation begins 1 week later for both Freshmen and Transfer. We reevaluate credit based on AP exams, rerun Final DPRs, and notify transfers.

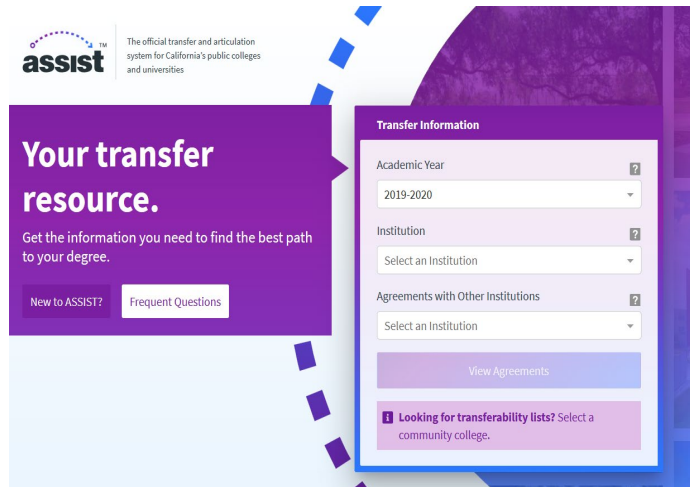
July 17: FTF block scheduling begins-our soft deadline for FTF evaluations.

August 12 - Mid October: Freshmen and Transfer continue to be evaluated as their transcripts come in (although few)



What Are The External Resources We Use in Transfer Evaluation?

ASSIST [Assist website](#)



TES [Transfer Evaluation System](#)

Course Finder 4

INSTITUTION → DATA SET → COURSE LIST → COURSE DETAIL

PORTLAND STATE UNIVERSITY PORTLAND, OR
PORTLAND STATE UNIVERSITY BULLETIN 2016-2017

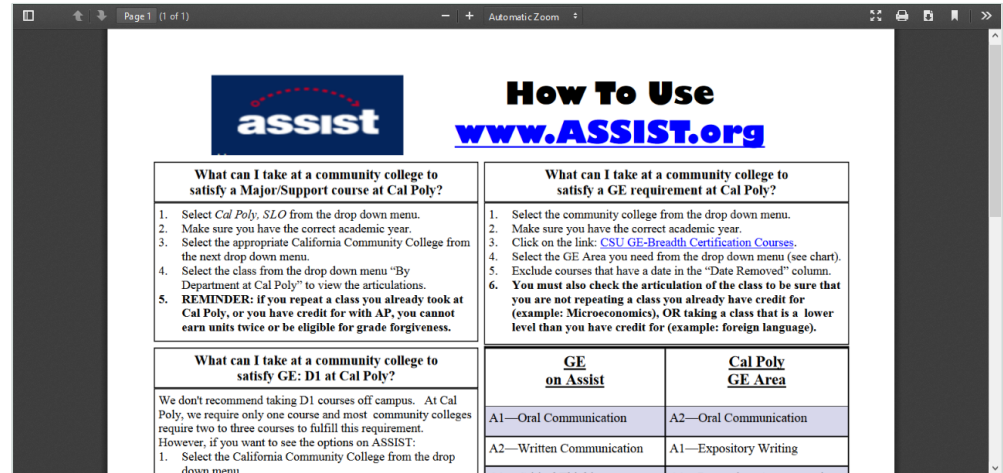
PHL 201 INTRODUCTION TO PHILOSOPHY

General introduction to philosophy. While different instructors will use different materials – typically classical texts – attention will be given to what makes a question a philosophical question and the nature and methods of philosophical inquiry.

Units: 4
Department: PHILOSOPHY ⓘ
Source catalog: Portland State University Bulletin 2016-2017
Course history: View Detail ⓘ



How to use Assist Effectively?



The screenshot shows the ASSIST.org website with the following content:

assist
How To Use
www.ASSIST.org

What can I take at a community college to satisfy a Major/Support course at Cal Poly?	What can I take at a community college to satisfy a GE requirement at Cal Poly?						
<ol style="list-style-type: none"> 1. Select <i>Cal Poly, SLO</i> from the drop down menu. 2. Make sure you have the correct academic year. 3. Select the appropriate California Community College from the next drop down menu. 4. Select the class from the drop down menu "By Department at Cal Poly" to view the articulations. 5. REMINDER: if you repeat a class you already took at Cal Poly, or you have credit for with AP, you cannot earn units twice or be eligible for grade forgiveness. 	<ol style="list-style-type: none"> 1. Select the community college from the drop down menu. 2. Make sure you have the correct academic year. 3. Click on the link: CSU GE-Breadth Certification Courses. 4. Select the GE Area you need from the drop down menu (see chart). 5. Exclude courses that have a date in the "Date Removed" column. 6. You must also check the articulation of the class to be sure that you are not repeating a class you already have credit for (example: Microeconomics), OR taking a class that is a lower level than you have credit for (example: foreign language). 						
What can I take at a community college to satisfy GE: D1 at Cal Poly? We don't recommend taking D1 courses off campus. At Cal Poly, we require only one course and most community colleges require two to three courses to fulfill this requirement. However, if you want to see the options on ASSIST: <ol style="list-style-type: none"> 1. Select the California Community College from the drop down menu. 	<table border="1"> <thead> <tr> <th><u>GE on Assist</u></th> <th><u>Cal Poly GE Area</u></th> </tr> </thead> <tbody> <tr> <td>A1—Oral Communication</td> <td>A2—Oral Communication</td> </tr> <tr> <td>A2—Written Communication</td> <td>A1—Expository Writing</td> </tr> </tbody> </table>	<u>GE on Assist</u>	<u>Cal Poly GE Area</u>	A1—Oral Communication	A2—Oral Communication	A2—Written Communication	A1—Expository Writing
<u>GE on Assist</u>	<u>Cal Poly GE Area</u>						
A1—Oral Communication	A2—Oral Communication						
A2—Written Communication	A1—Expository Writing						

- Use the Assist Flyer on the Registrar's Page

[Assist Flyer](#)

CCC- Out of State/Private Comparison Table

Institution	CCC	OOS/Private
External Resources	Assist + TES School Website Catalog	TES School Website Catalog
How to Assess GE Patterns	Honor CCC GE Pattern. 2 arts, 1 humanities, and Certify out of area. If it is a GE there, it is a GE here!	May vary. Use discretion and good decision making when determining GE area. If it is a GE there, it is almost always a GE here!
Articulation	What is on Assist is applicable	Read course description, check GE, compare with a Cal Poly equivalent course. When in doubt recommend Substitution.
U. Division GE C4, D5 and B7/F	Not applicable	Read Course Description. Must be a similar GE if not the same pattern and must be UD !
USCP	Read course description-USA Emphasis	Read course description-USA Emphasis

Transfer Credit: Common Misunderstanding – What is D1?

The GED1 requirement is mandated by the State, and must incorporate the following three components:

US 1 – Historical development of American institutions and ideals

US 2 – U.S. Constitution and government

US 3 – California state and local government

Cal Poly incorporates all three components into its designated GED1 courses: ES 112, HIST 201, HIST 202, HIST 206, HIST 207, POLS 112, WGS 201



How to meet D1 with Transfer Credit

US - 1

- AP US History or
- A US-1 CCC course* or
- An appropriate US History course from a private school, out-of-state school, UC or CSU

US - 2

- AP Gov & Politics: US only or
- A US-2 CCC course* or
- An appropriate US Government course from a private school, out-of-state school, UC or CSU

US - 3

- POLS 111 at Cal Poly (1 unit) or
- A US-3 CCC course* or
- An appropriate State & Local government course from a CALIFORNIA private school, UC or CSU

Student is Matriculated! Now What?

- ✓ We run their DPR
- ✓ Check for any gaps, missing GE
- ✓ Do they have an AP Exam that we can use in GE?
- ✓ Do they have repeats?
- ✓ Do they have USCP met?
- ✓ Is there an area E (formerly D4)?
- ✓ Any classes to recommend as Substitution? (email student)
- ✓ Any components of D1 missing? (If only US 3, email student to take POLS 111 only)



Any Questions?

Striving for a Seamless Transition

Articulation & Transfer Credit

Stuart Fryer Statewide Articulation Officer sfryer@calpoly.edu
Basak Williford Academic Progress Counselor willifor@calpoly.edu

Thanks for attending! We would love to hear feedback via our survey.
Information on this presentation will be published on the Office of the Registrar Summit website.



CAL POLY