



# Environmental Management & Sustainability in Taiwan

Cal Poly Global Program

Summer 2020



# Faculty Leader– Dr. Yiwen Chiu

- ▶ Natural Resources Management and Environmental Science (NRES) department
- ▶ Email: [yichiu@calpoly.edu](mailto:yichiu@calpoly.edu)
- ▶ Office: 180-504 (in Baker Sci. Building)
- ▶ Specialties: Quantitative sustainability, environmental life-cycle analysis, and environmental modeling.



# Taiwan\*

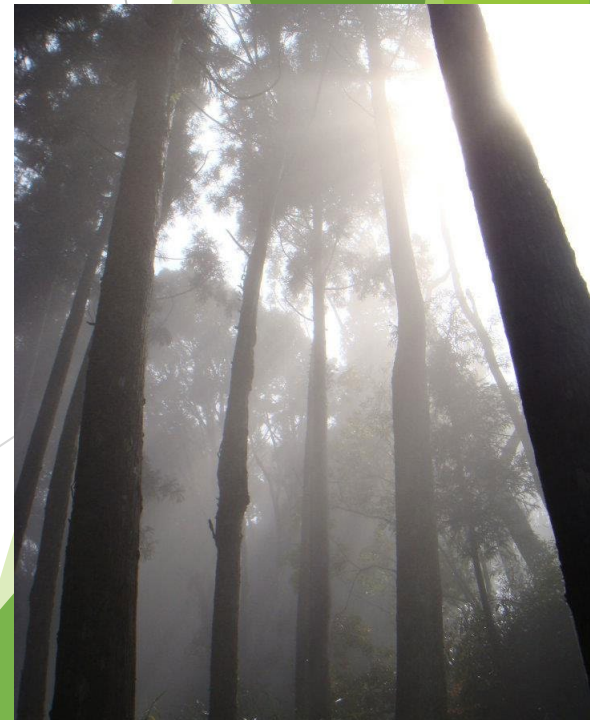
- Currency: New Taiwan Dollar (~NTD 29.8 = 1 USD)
- Area size 12 times smaller than California
- World's 20th largest economies and 15th-most competitive economy
- One of the most densely populated countries in the world
- One of the world's largest cities in metropolitan population (Taipei).
- Home to 14 recognized aboriginal tribes
- Lowest fertility rate in the world
- One of the most liberal country in Asia
- One of the safest country for travelers, female and solo travelers in particular
- 159 universities, 31 of which are located in Taipei!!

\* “Ambiguous” international status: Not internationally recognized/defined as a country, but “acts” like a country



# Why Taiwan? Sustainability in Taiwan??

- ▶ Mountainous terrain with extremely high ecological diversity supported by various climate features ranging from tropic to frigid zones
- ▶ Species richness per area size is **60** times higher than world average
- ▶ Unique socioeconomic and environmental characteristics make Taiwan a perfect living classroom
- ▶ Taiwan Program
  - ▶ One of the few programs fostering the realm of sustainable development and environmental management
  - ▶ The only Cal Poly program taking place in Taiwan





# Program Basics

## ► Cal Poly Global Program

- Cal Poly support before, during, and after!

## ► Length: 5 weeks

- June 28 – August 1, 2020
- Taipei – Road Trip – Changhua

## ► Academics: 8 units of Cal Poly credit

- NR 360 - Ethnicity and the Land (GE C4 & USCP)
- NR 323 - Human Dimensions in Natural Resources Management (GE D5)\*

\*D3 credit may be requested via substitution with CPIC

## ► Excursions in Taiwan

- History
- Culture
- Environment
- Landscape
- Industry



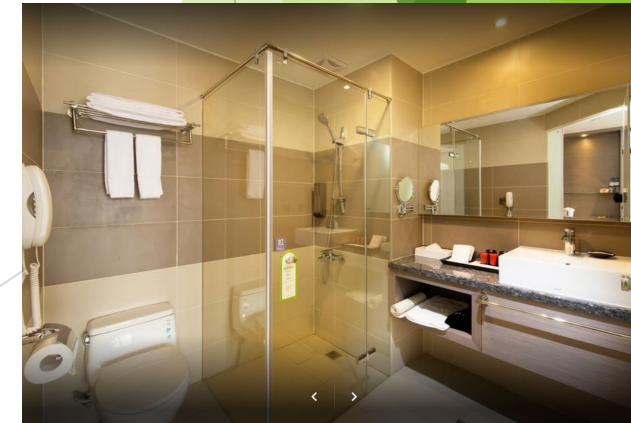
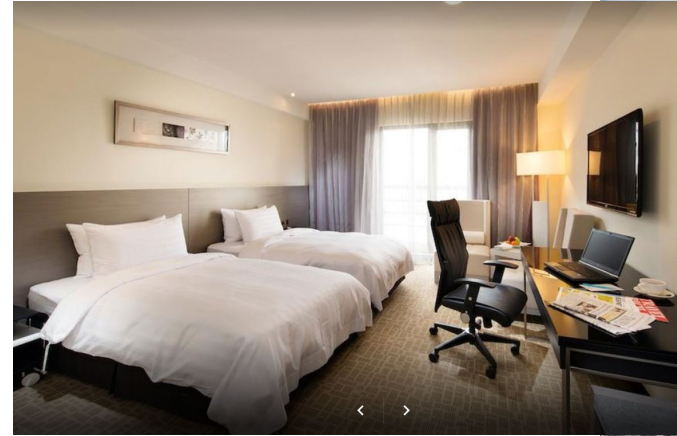
# Program Itinerary

Date	Activity & Topics	Theme	Location
<b>Week 1-2</b>	Orientation & Lectures City tours Eco tours	Urbanization, Population Growth	Taipei
<b>Week 3</b>	Lectures Road trips (involve hiking)	Aboriginal culture, Ecological conservation	Hsinchu – Guanwu – Xitou
<b>Week 4-5</b>	Lectures Cultural tours Cultural activities (art)	Public engagement, industrial development	Changhua



# Accommodations

- ▶ Hotels close to lecture locations
  - ▶ Double occupancy
  - ▶ Taking public transit might be needed
  - ▶ City bikes available
  - ▶ Coin-operated laundry close by
- ▶ Breakfast included (Taipei)





# Taipei





# Taipei City & Eco Tours





# Jinguashih Old Street



SUNSHINE L18206





# Eco-friendly Farming & “Satoyama”





# Guwanwu Forest Recreation Area





# Xitou Nature Education Forest





# Changhua (NCUE)

Host institution: National Changhua University of Education





# Cultural and Social Aspects of Sustainable Development

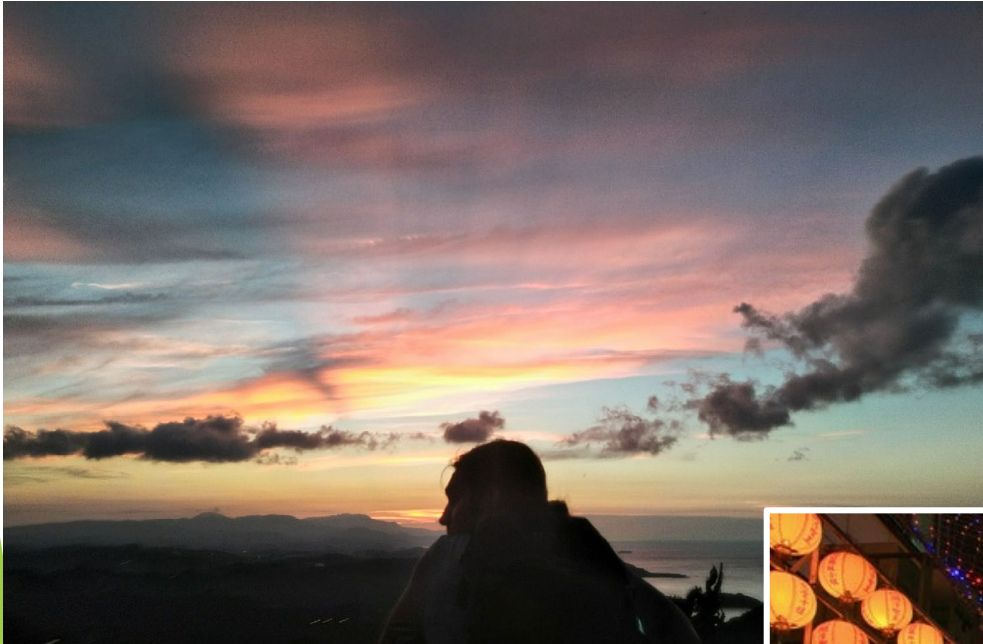


Credit: [http://bushps.blogspot.com/2012/10/blog-post\\_26.html](http://bushps.blogspot.com/2012/10/blog-post_26.html)



# Free Time (Weekends)

- Explore Taiwan by yourself but with the help of Taiwanese students





# Summer 2020: Program Fee

Global Program Fee: ***TBD***, but will include:

- ▶ 8 units of Cal Poly tuition
- ▶ Lodging in Taiwan with daily breakfast
- ▶ Service provider's support in Taipei and Changhua
- ▶ Excursions around Taiwan
- ▶ \$400 International Center Administrative fee
- ▶ Routine and Emergency Medical insurance

Program fee does NOT include: airfare, personal expenses, etc



# Summer 2019: Cost of Participation

• Global Program Fee	\$6,750
• Airfare*	\$1,000-1,300
• Books and supplies*	\$50-100
• Personal Expenses *	\$700-1,000
• Local transportation*	\$100 - \$150

APPROXIMATE TOTAL COSTS \$8,550- \$9,550\*

*\* Costs are approximate and subject to individual*



# Financial Aid & Scholarships

- ▶ Financial aid may be limited during Summer term but is possible
- ▶ Students are encouraged to meet with a Financial Aid Counselor to discuss your options
- ▶ Scholarship resources are available on the Study Abroad website





# Eligibility & Application Overview

- ▶ Eligibility:
  - ▶ Min 2.5 GPA, cannot be on AP
  - ▶ Good disciplinary standing
- ▶ Application Overview:
  - ▶ Students can apply via the online Cal Poly Abroad Application
  - ▶ Online application includes the following requirements:
    - ▶ Brief Personal Statement: 2-3 paragraphs about how your experience abroad will contribute to your educational, career and personal goals
    - ▶ Uploaded scan of valid passport
- ▶ **Application Due March 1, 2020 (anticipated)**



# Next Steps

- ▶ Attend mandatory Study Abroad 101 workshop
- ▶ Consult with academic advisor & program faculty
- ▶ Talk with parents, guardians, and significant others
- ▶ Apply for or renew your passport!
- ▶ **Pay attention to the latest update (program fees and application deadline)**

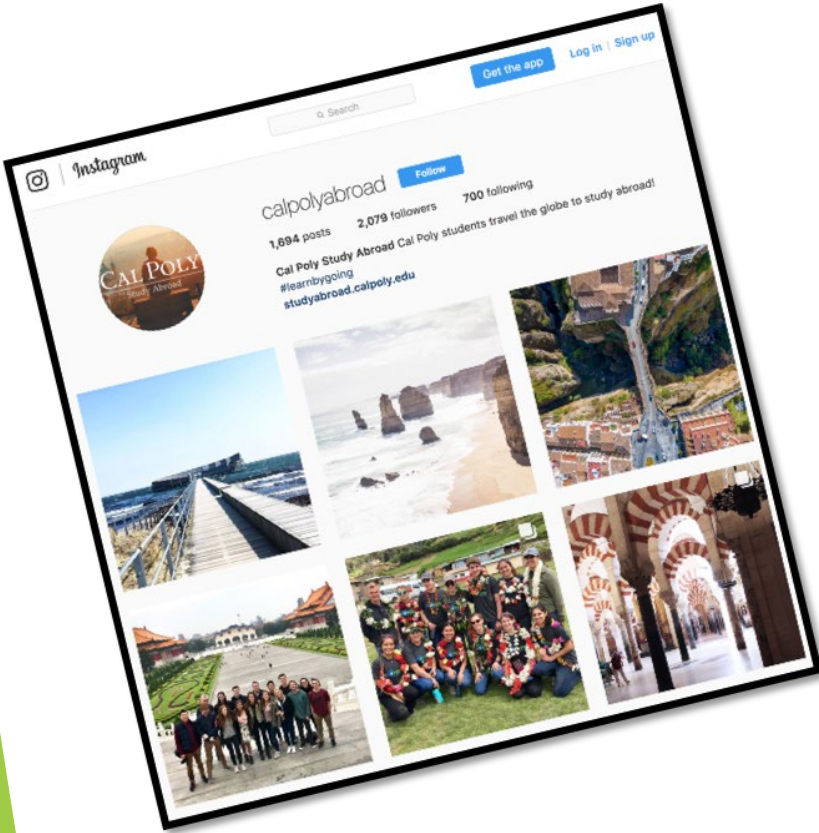


# Study Abroad 101 Workshop

- ▶ Discuss your goals, program options, and financial planning with a Study Abroad Peer Advisor!
- ▶ Start an online profile in the Cal Poly Abroad Application
- ▶ Attend a mandatory workshop before you start your program application:
  - ▶ Offered 5 times a week!
  - ▶ Reservations required
  - ▶ More information here on:
    - ▶ [Abroad.calpoly.edu](http://Abroad.calpoly.edu) > Study Abroad > Workshops & Info Sessions



# Cal Poly Abroad Social Media



@CAL POLY ABROAD  
#LearnByGoing



Cal Poly SLO Study Abroad





## Cal Poly International Center

### Drop In Peer Advising M-Th

10:00 – 11:00 a.m.

2:00 – 4:00 p.m.

Building 52-E32

Program Coordinator:

**Sara J. Otis**

**[sotis@calpoly.edu](mailto:sotis@calpoly.edu)**

**805-756-7321**

**Schedule appointments:**  
**[studyabroad@calpoly.edu](mailto:studyabroad@calpoly.edu)**

**[abroad.calpoly.edu](http://abroad.calpoly.edu)**

## Program Faculty Deader

### Office Hours

M & W 1:10 – 3:00pm

Building 180-504

**Dr. Yiwen Chiu**

**[yichiu@calpoly.edu](mailto:yichiu@calpoly.edu)**

**805-756-2972**

Program webpages

At International Center:

**<https://abroad.calpoly.edu/index.cfm?FuseAction=Programs.ViewProgramAngular&id=10841>**

At Dr. Chiu's Lab:

**<https://quantsus.calpoly.edu/study-abroad-taiwan>**