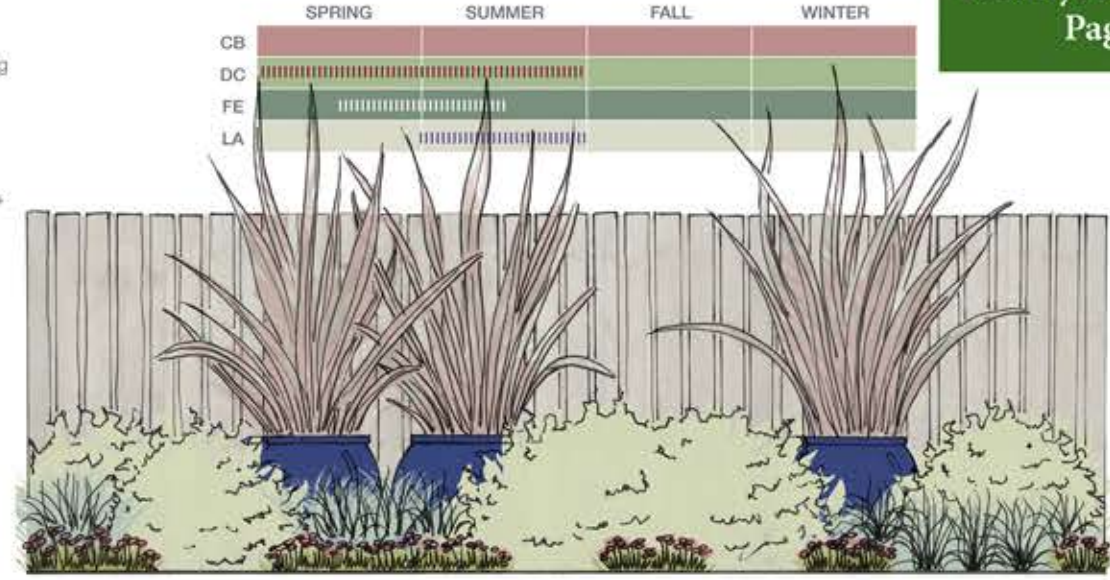
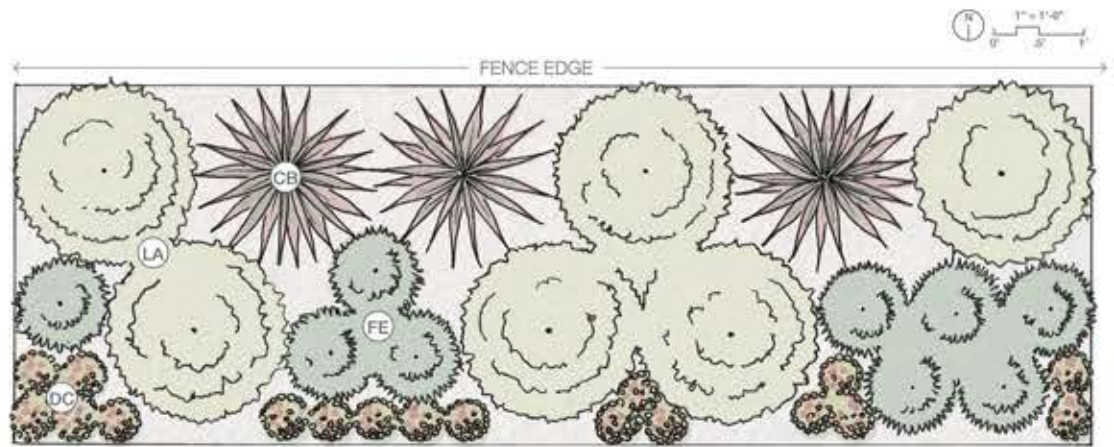


**FULL SUN — SOUTH FACING**



ABBR.	BOTANICAL NAME	COMMON NAME	SIZE	QTY	NOTES
CB	<i>Cordylina banksii</i> 'Electric Flash'	Electric Flash Grass Tree	15 gal	3	Plant in 18" ceramic pot
DC	<i>Dianthus caryophyllus</i> 'Premier Magenta & White'	Carnation	6-pack	18	Plant annually early spring
FE	<i>Festuca idahoensis</i> 'Siskiyou Blue'	Siskiyou Blue Fescue	1 gal	9	
LA	<i>Lavandula atardii</i> 'Meerio' PP#25276	Meerio Lavender	5 gal	6	



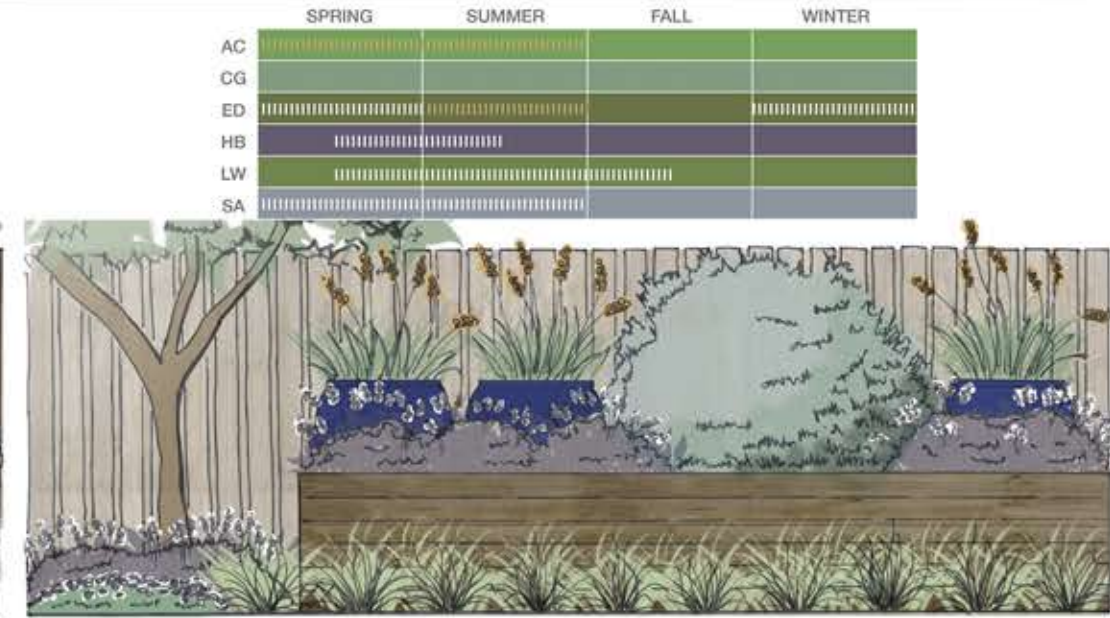
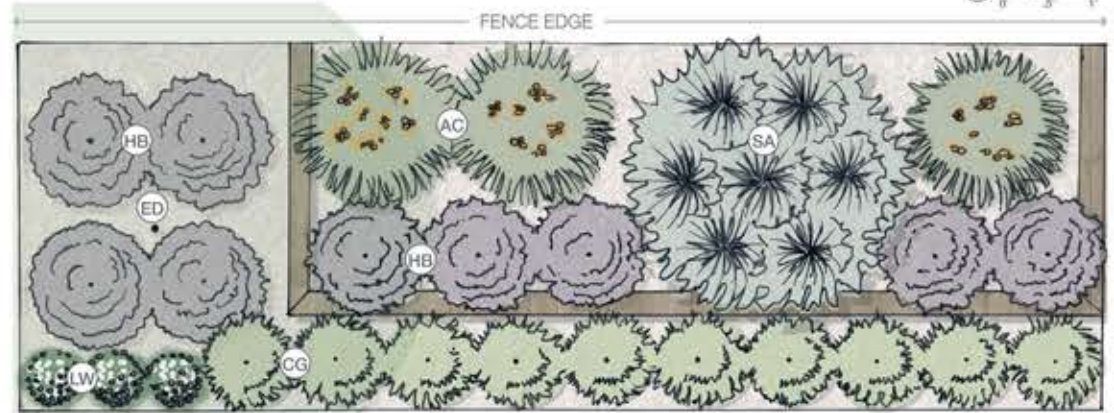
Date // April 17, 2018

Course // LA 349

**PART SUN, PART SHADE — EAST FACING**



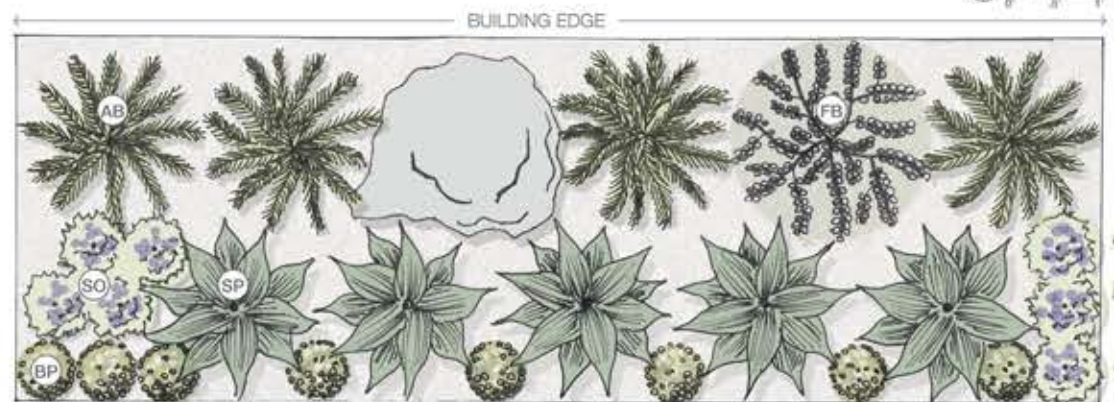
ABBR.	BOTANICAL NAME	COMMON NAME	SIZE	QTY	NOTES
AC	<i>Anigozanthos</i> 'Cape Aurora'	Cape Aurora Kangaroo Paws	1 gal	3	Plant in 18" ceramic pot
CG	<i>Carex glauca</i>	Blue Sedge	1 gal	10	
ED	<i>Enobotrya deflexa</i>	Bronze Loquat	15 gal	1	
HB	<i>Heuchera</i> 'Black Taffeta'	Coral Bells	1 gal	9	
LW	<i>Lobularia</i> 'White Stream'	Sweet Alyssum	6-pack	3	Plant annually early spring
SA	<i>Salvia apiana</i> var. <i>compacta</i>	Compact White Sage	5 gal	1	



**FULL SHADE — NORTH FACING**



ABBR.	BOTANICAL NAME	COMMON NAME	SIZE	QTY	NOTES
AB	<i>Asplenium bulbiferum</i>	Mother Fern	5 gal	4	
BP	<i>Begonia</i> 'Prelude White'	Prelude White Begonia	6-pack	8	Plant annually in early spring
FB	<i>Ficus benjamina</i>	Weeping Fig	15 gal	1	Plant in 24" ceramic pot
SO	<i>Saintpaulia ionantha</i>	African Violet	1 gal	7	
SP	<i>Spathiphyllum</i> 'Annette'	Peace Lily	1 gal	5	



Assignment 1 // Creating Vignettes Based on Aspect