



Sumundar Khan | Tammy Chao | LA 204 Spring '19

Mission: Delegate interactions between the community, the park, and the county.

Site Analysis



LEGEND

- ★ Entrance/Exit - opening mainly from the southwest and north-east, less coverage from wind
- Creek - very open and low tree planting shade central area receives the most amount of sun
- Circulation - single path throughout the entire site, no options given for the users of the park, people cut through certain areas, mainly sidewalks around the area, get overcast
- Buildings - around outer perimeter of the park
- Contours - great change of elevation from the northwest to southeast, tractor use due to elevation change on the north end of the site
- Wind - great change of elevation from the southwest to southeast, tractor use due to elevation change on the north end of the site
- Vegetation - some dead trees throughout the site, single randomly placed throughout the site and in the central area
- Hazards - people have to jump over large puddles of water to continue along the path



Material Palette



Plant Palette



Concept Development

After visiting the park and gathering the types of issues it faces, we decided that the focus of our design would be to turn the park into something more inclusive. The main people group utilizing the space is currently adults and elderly peoples, but not many people from younger generations. This could very well be because of the park's lack of attraction towards people of all ages. Our goal early on for this park was to encourage people to stay, rather than simply walk through. We decided to carry out this task by literally committing to our mission statement: "Bridging the Gap" and inserting an extended walkable platform on a second level which is accessible from all directions of the park and overhangs the swale that runs east to west. The purpose of this main attraction is to enable people of all ages to be intrigued by the bold colors and bring them closer to the central area of the park. By placing the gathering area in the center of the park, people from all directions of the park will meet in the middle, and the divide between generations will diminish. For those who are looking for an easy stroll, there is also an easy path that runs along the outside perimeter of the park. By offering a variety of features, We have enabled people of all generations to enjoy meadow park more efficiently.

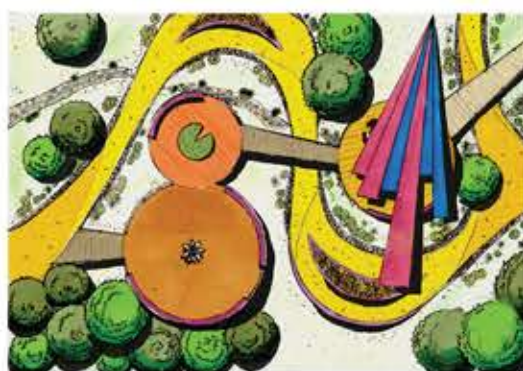
Project Goals

- Create a large public space that is Accessible, open, and attracts people of all ages
- Maintain the form of the current curvilinear form of the park and enhance it
- Enable an enjoyable experience for users at all times by including features that operate at night
- Attract people during regular park hours as well as 'closed park hours'
- Push for people to interact with eachother more, rather than making it easy for people to stick to themselves
- Create interactions between people and people as well as people and place



Sumundar Khan | Tammy Chao | LA 204 Spring '19

Mission: Delegate interactions between the community, the park, and the county.



LEGEND

- 1 Entrances- north and south entrances have seating below the pergola like shade structure, east and west entrances have seatwalls for guests to wait for their company
- 2 Lotus Lamps- light up lamps on top of the platforms for night time use
- 3 Shading Structure- shading structures along the elevated platforms provide some shade since there are little to no trees reaching that elevation
- 4 Grass Mounds- artificially turfed mounds to provide seating and interaction while creating a sense of groundedness
- 5 Central Area- raised platform with arched walking ramps on both sides that has a waterfall going from the ramp to the central platform
- 6 Central Pond- during the dry seasons of the year, the pond and water stream disappears and showcases a terraced riverbank with patterned stones
- 7 Raised Platforms- elevated platforms that allow another access to the entire site and views
- 8 Barbecue Areas- specified areas throughout the park highlighting social gatherings and accommodations for day long visits
- 9 Seating Areas- seating areas along the path for those wanting to take a break, sit down and enjoy the park, or people watch
- 10 Planter Boxes- visual division from the passersby along the path and those wanting to take a break and sit down
- 11 Perspectives- views from the north and west entrance as well as the outer path



Scale 1"=40'



West Entrance
Coming from the west, people are greeted with the view of the stream and the platforms in the distance. Seat walls are provided for those waiting for friends in anticipation of going on the elevated platforms.



Path
The path alongside of the boundaries are for the leisure stroll of visitors with open access to the surroundings.



North Entrance
The view from the north entrance of the central area depicts the first of many raised platforms providing a new perspective of the entire park and the connections throughout. Rather than the simple walk around the park, the elevated platforms provide the user a chance to see the entire park.

