

Dreamscape Park Narrative

Cornered by railroad tracks, concrete bridges, and empty lots exists the site of the prior Guadalupe Central Park. This is not unusual for the city of Guadalupe, CA. In this town, there are not many open spaces for the community to congregate, exercise, or just relax from a long days work. The Dreamscape Park design aims to relieve these needs by giving the community a space that is structured for activity while also allowing for creative play and passive relaxation.

The genesis of the design is influenced by the kite. In addition to its vibrant colors, the geometry of the kite is "sharp but playful", a trope that is continuous throughout the park's design. The kite symbolizes the freedom of dreaming in the sense that your subconscious is sailing away, only slightly attached, to the human body.

The kite can be an active, passive, group, or solitary activity...whichever makes one the happiest.

At Dreamscape Park, users can be their inner dreamer.

- 1 Accessible parking lot
- 2 Skate park
- 3 Playground
- 4 Mixed-Use Lawn
- 5 Basketball/Futsal court
- 6 Dog run
- 7 Bocce ball courts & deck
- 8 The "Boulevard"
- 9 Palm grove
- 10 Restrooms & water fountain
- 11 Outdoor exercise equipment

Graphic scale: 0' 15' 30'



Graphic scale: 0' 10' 20'

Native California planting swaths

- California fuchsia (*Epilobium canum*)
- Purple sage (*Salvia dorrii*)
- California poppy (*Eschscholzia californica*)

Subsurface drainage system

- This system is designed to move water from pervious surfaces underground and into a storm water detention tank. This system extends the longevity of the site by shielding exposed surfaces from water damage.

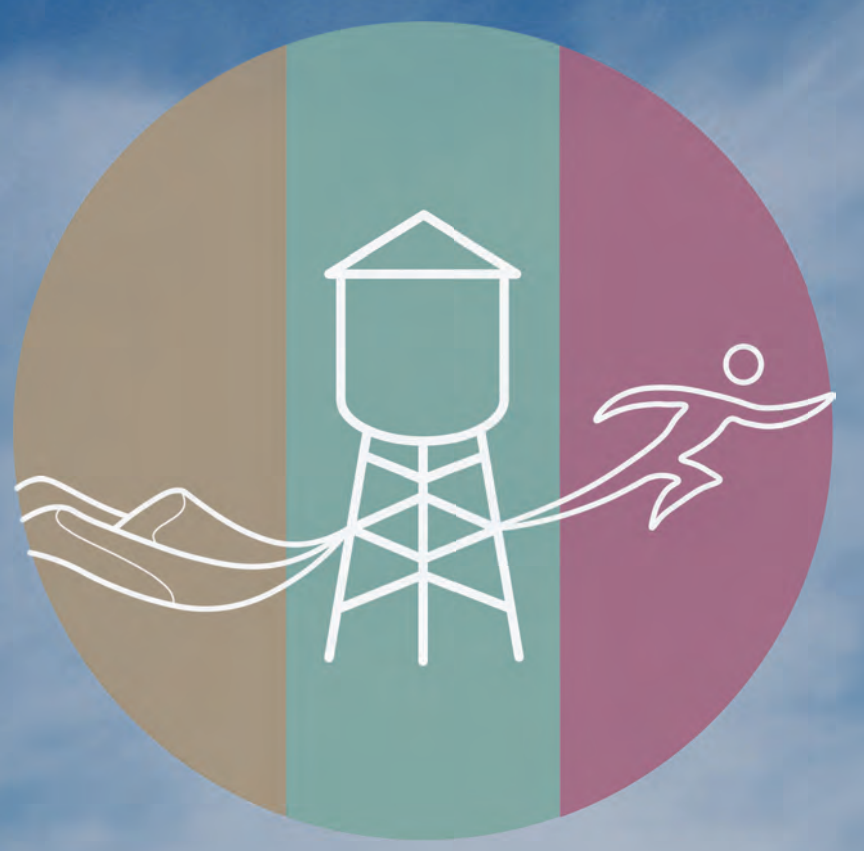
Native Californian palm grove

- Washington filifera* is the only palm native to California. The species resilience is honored in a beautiful palm grove in the heart of the park.

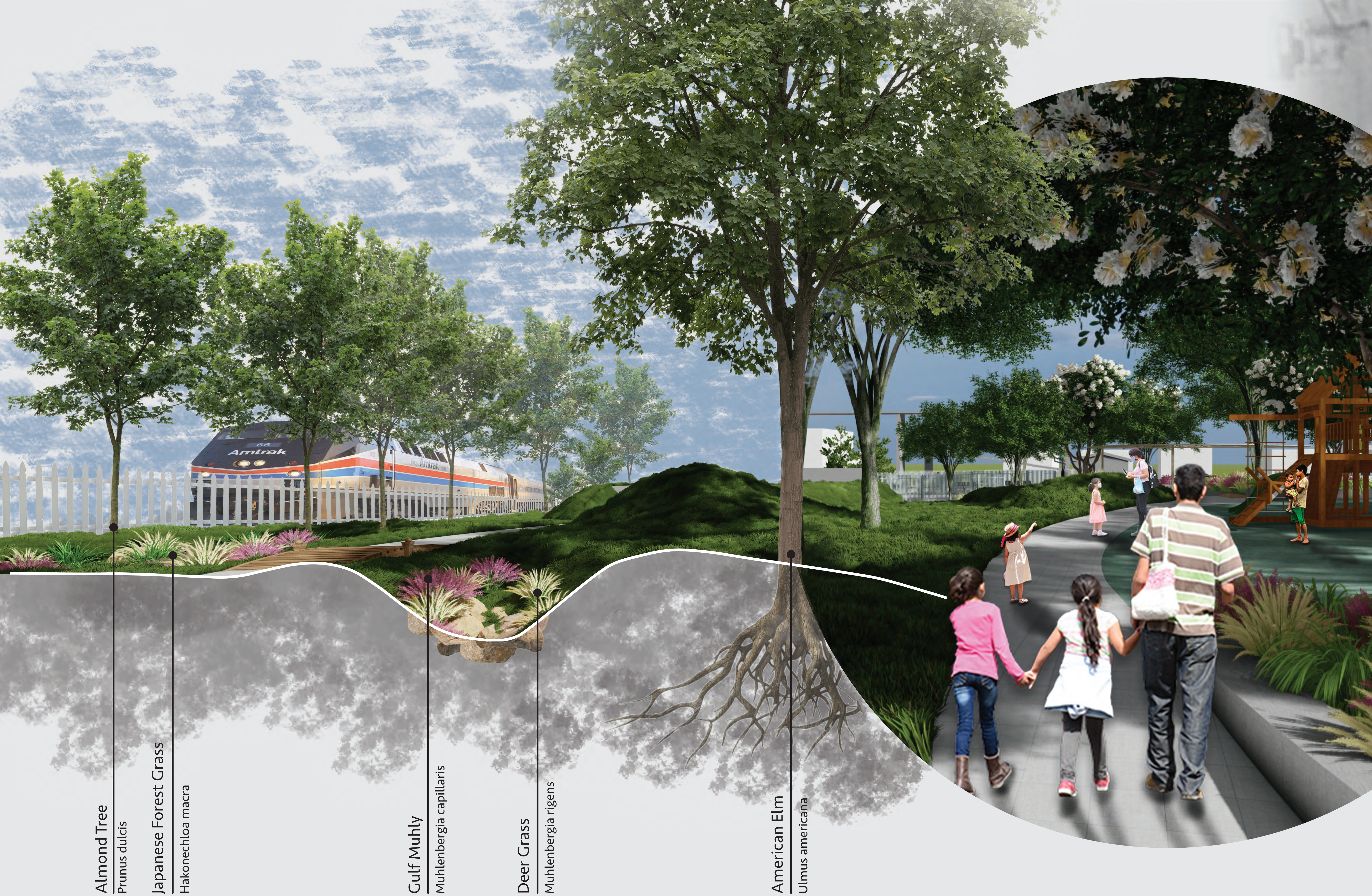
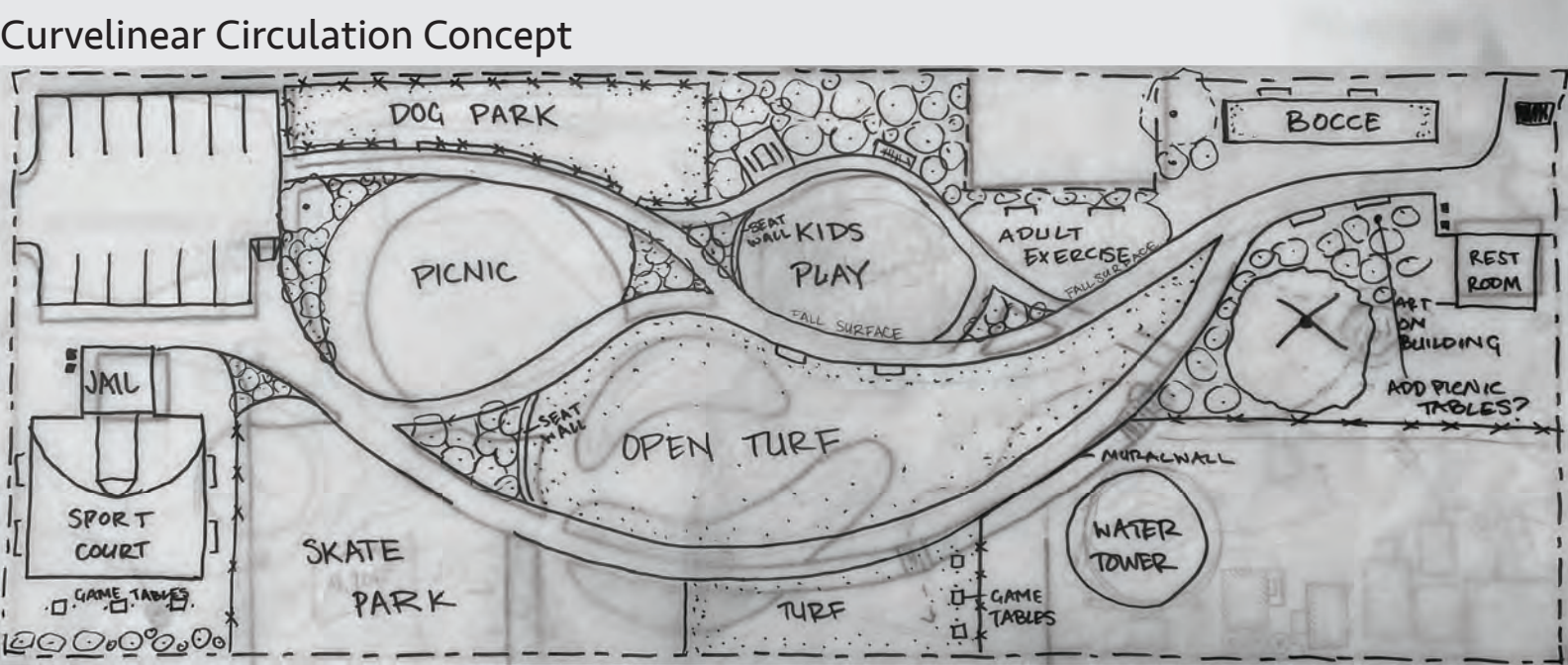
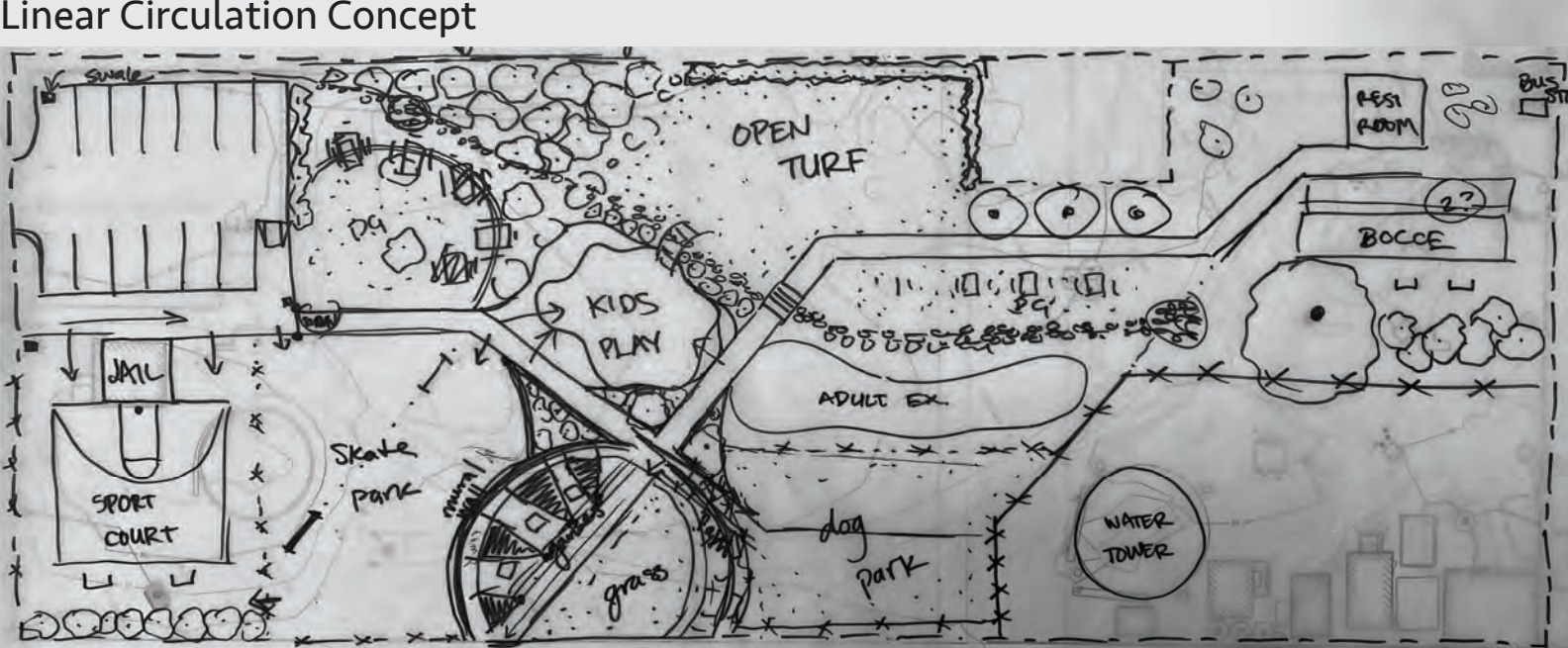
Storm water detention tank

- This tank is the destination of the collected water run-off. The water from this tank is recycled and then used in irrigation.





Guadalupe, a small town just west of Santa Maria, California is a tight knit agricultural community with a strong sense of place. The water tower located on site can be seen for miles and is an important landmark to the residents of Guadalupe. The design of this park looks to keep the culture of the town while addressing the needs of the community.



Almond Tree
Prunus dulcis

Japanese Forest Grass
Hakonechloa macra

Gulf Muhly
Muhlenbergia capillaris

Deer Grass
Muhlenbergia rigens

American Elm
Ulmus americana



- 1 Historic Jail
- 2 Basketball Court
- 3 Skate Park
- 4 Picnic Area
- 5 Bocce Ball Court
- 6 Mound Circle
- 7 Playground
- 8 Adult Exercise
- 9 Bioswale
- 10 Water Tower
- 11 Dog Park
- 12 Restroom
- 13 Bike Racks
- 14 Bus Stop

Tower Park aims to address the needs of the community while also addressing landscape performance. While the goals of these individual stakeholders may be different, the design does not have to consider them independently. Tower Park design solution has integrated all goals.

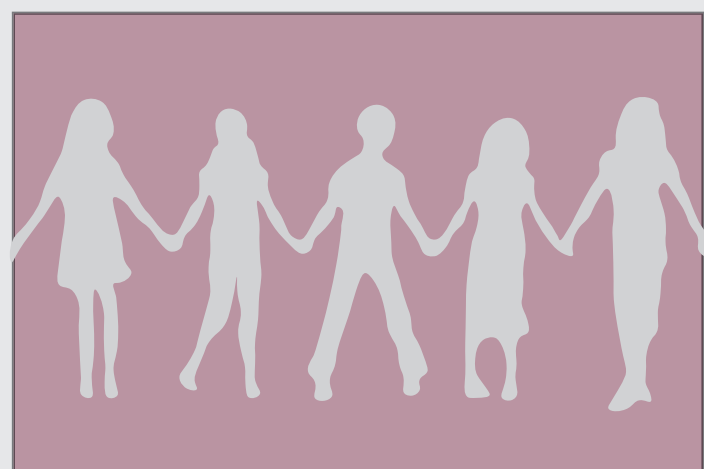
Community Goals:



Improved Aesthetics



Increased Activity Zones

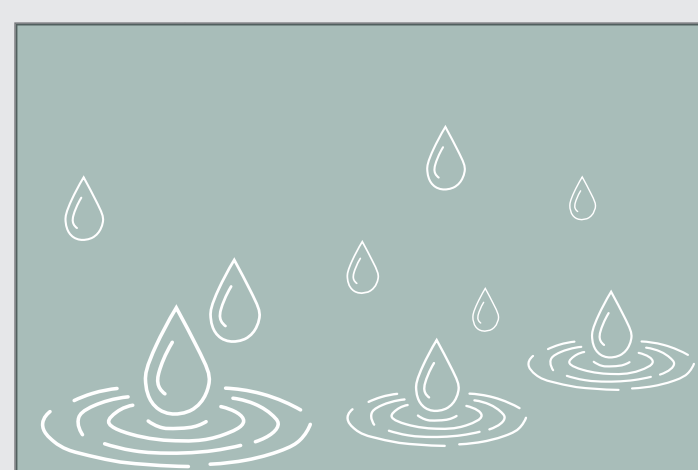


Enhanced Sense of Community

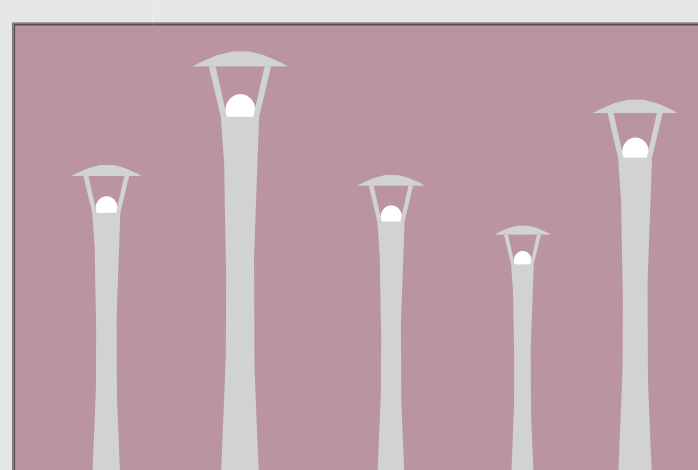
Performance Goals:



Increased Fauna Habitat



Stormwater Management



Improved Security

Integration:

Aesthetics were improved on site by increasing the vegetation leading to additional fauna habitat. Activity zones were designed with stormwater in mind and a bioswale runs throughout as an included site feature. While keeping the residents safe by increasing lighting on site, the sense of community in Guadalupe strengthens.

TOWER PARK

KACIE FETZER | LA 402 | FALL 2022

Guadalupe Central Park

Maddie Hawk
LA-402 Fall '22
Brett Betnar

1. Bocce Ball

2. Bathroom

3. BBQ

4. Vegetated Biofiltration

5. Game Tables
6. Seating

7. Stairs/Ramp

8. Dog Park

9. Central Green
10. Playground

11. Sport Court

12. Sakte Park

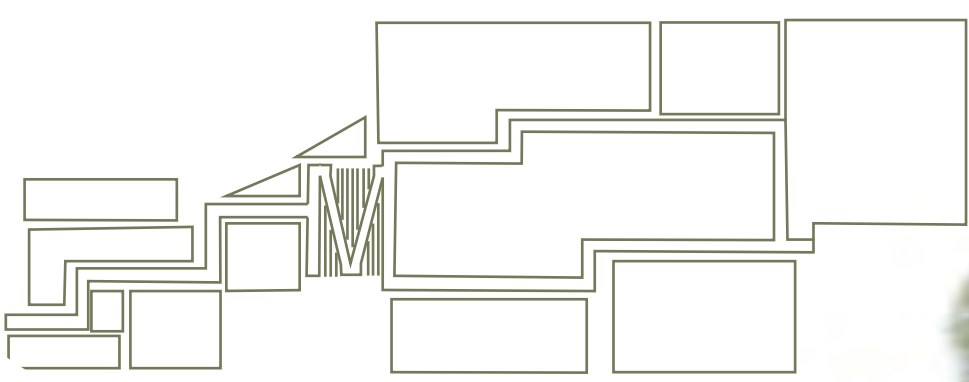
13. Viewing Area
14. Parking Lot

15. Historic Jail



CONTEXT
Gaudalupe is a small town just of the central coast of California. It is surrounded by agricultural fields, most commonly strawberry and brussel sprouts. The people of Guadalupe are a very tight knit community, brought together through the surrounding landscape. The two main points of attraction within the town are the sand dunes as well as the fresh fruit and vegetables that can be found all throughout.

CONCEPT
An abstraction of the surrounding landscape of Guadalupe. The rolling hills as well as the rectilinear rows of the agriculture fields. The parralel lines and placement of amentaties moves you through the space as well as allows you to stop look and admire the surrounding space.



Geometry

PATCHWORK PARK

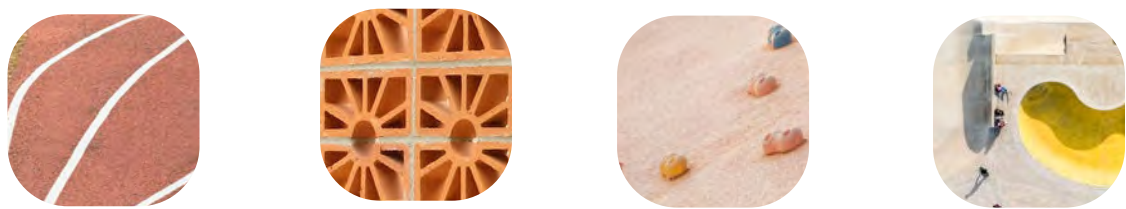
guadalupe,
california



geometry



material



**mission: re-design Guadalupe
Central Park to create a
flexible, active, and accessible
community space that
also embodies guadalupe's
cultural history.**

engage

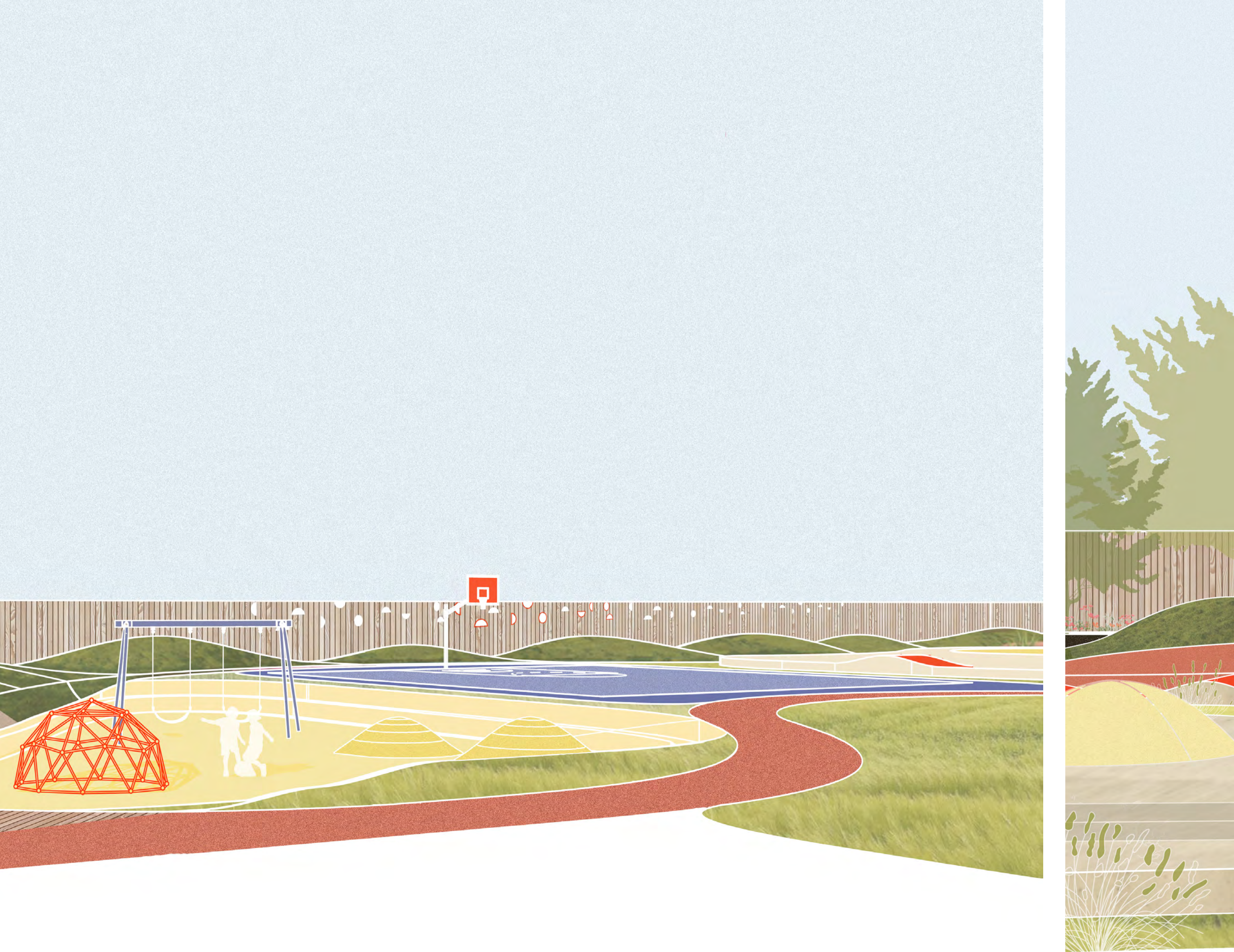
gather

grow

dog park

exercise





planting



*california
fuschia*

*mexican
feather
grass*

*deer
grass*

*yellow
bush
lupine*

*black-eyed
susan*

*native
wildflower
mix*

*Inspired the dune
landscapes that
surround Guadalupe,
Patchwork Park
features soft
mounding that
gently pulls you
through the space.
A gradient of activities
allows for all abiltites to
safely use the park.
Warm colors and flexible
opens spaces allow for
users to truly make
the space
their own.*



railroad tracks

① parking lot

② flex space

③ flexible lawn

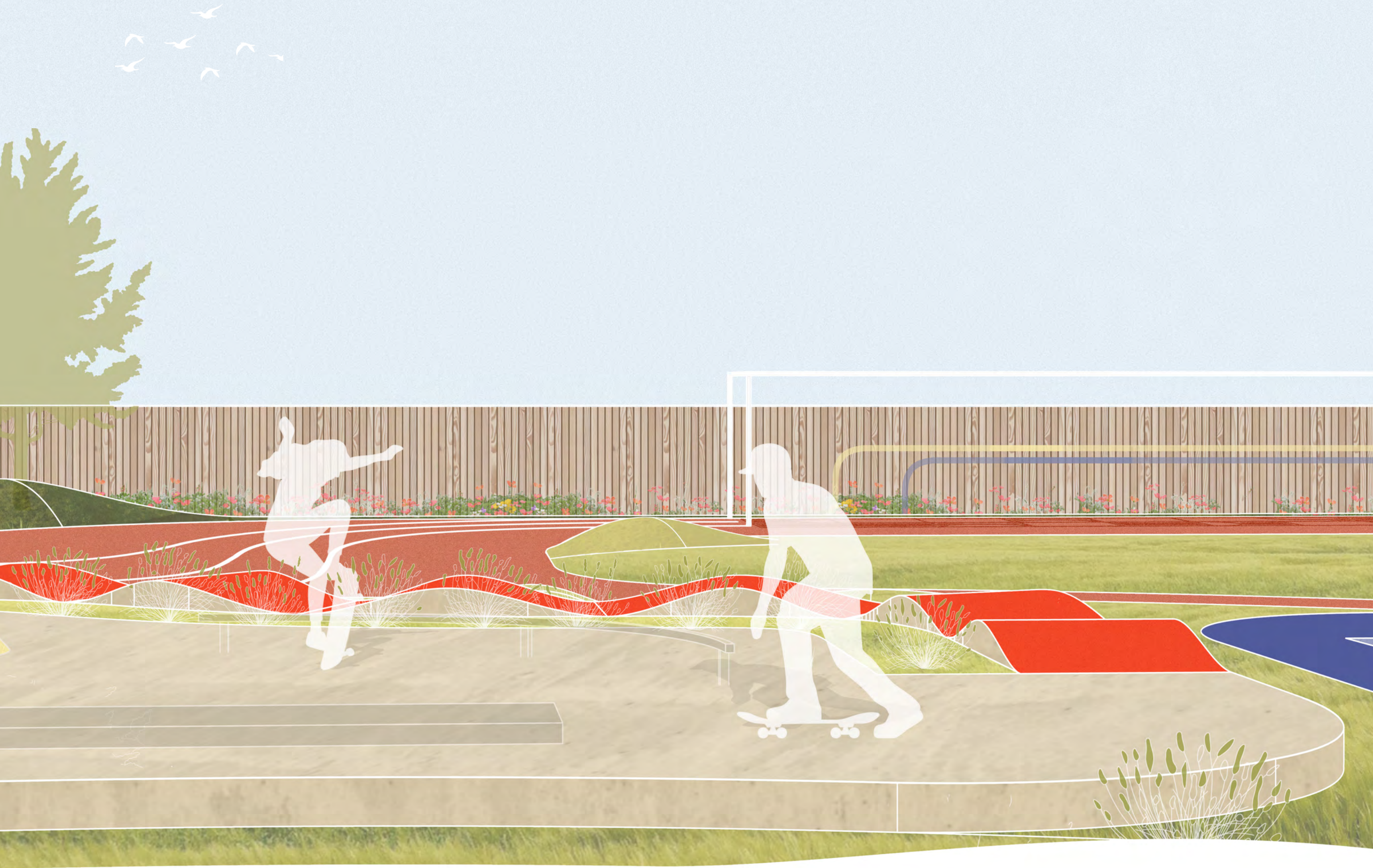
④ his

⑤ sk

⑥ ba

playground

sport co



----- community garden



scale: 1" = 20'

historic jail

⑦ playground

⑩ community garden

⑬ bus stop

skate park

⑧ bocce ball court

⑪ dog park

⑭ bridge

sketchball court

⑨ exercise equipment

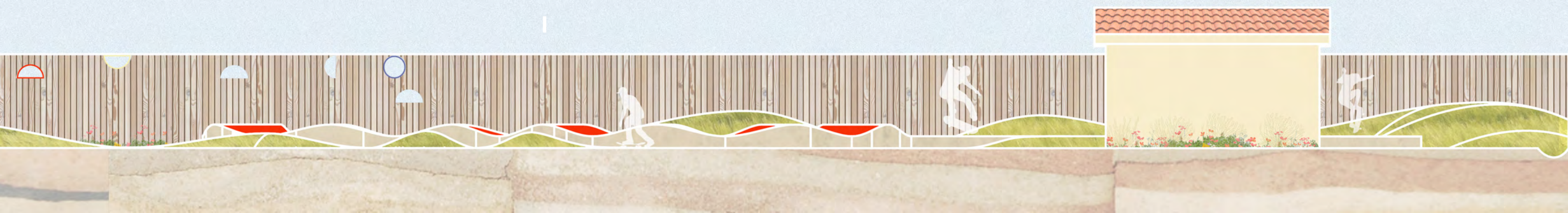
⑫ bathrooms

⑮ biofiltration area

art

skate park

historic building





Guadalupe Central Park

brief

Guadalupe is a small city, dominated by agiculture, with a tight-knit community, located in Santa Barbara County. The Central Park of the city is one of the few parks that the community has. The current conditions of Central Park are outdated and unkempt. Taken over by weeds, the park contains the city's famous water tower and old utilities. The park is fairly empty with mostly open grass space and a central concrete walkway. The historic jail on the site must be kept per the city government. Through community outreach, a list of desired program elements has been created as the basis for the renovation of the park.

goals

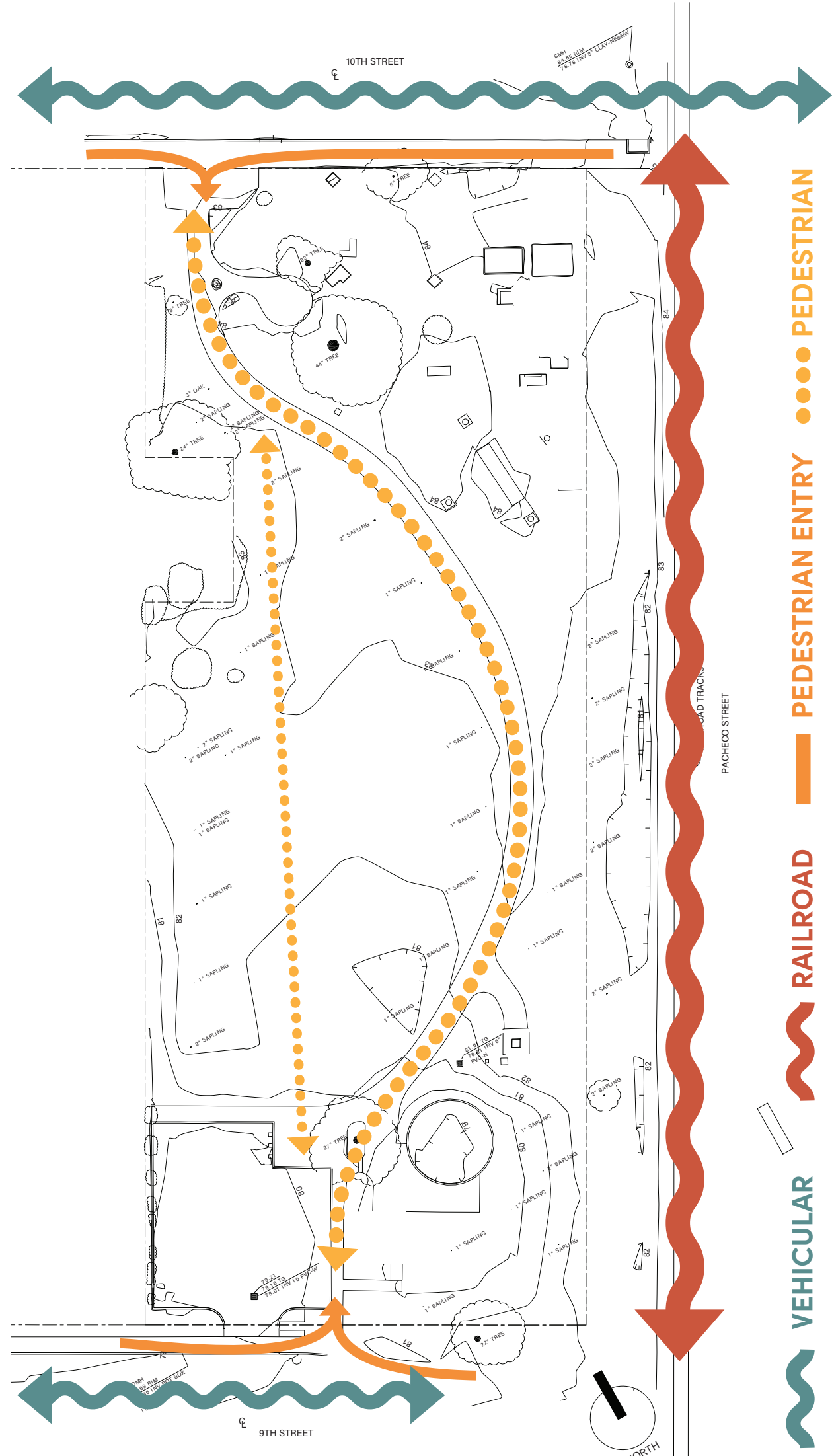
- Create space accessible to people of all abilities and all age groups to utilize
- Update park to meet needs and wants of the community
- Create aesthetic that reflects culture of the community

program

- 1. Parking Lot
- 2. Historic Jail
- 3. Half Basket-ball Court
- 4. Bioswale
- 5. Plaza
- 6. Dog Park
- 7. Skatepark
- 8. Playground
- 9. Activity Tables
- 10. Adult Exercise
- 11. Bathrooms
- 12. Stage
- 13. Lawn
- 14. Bus Stop

inventory

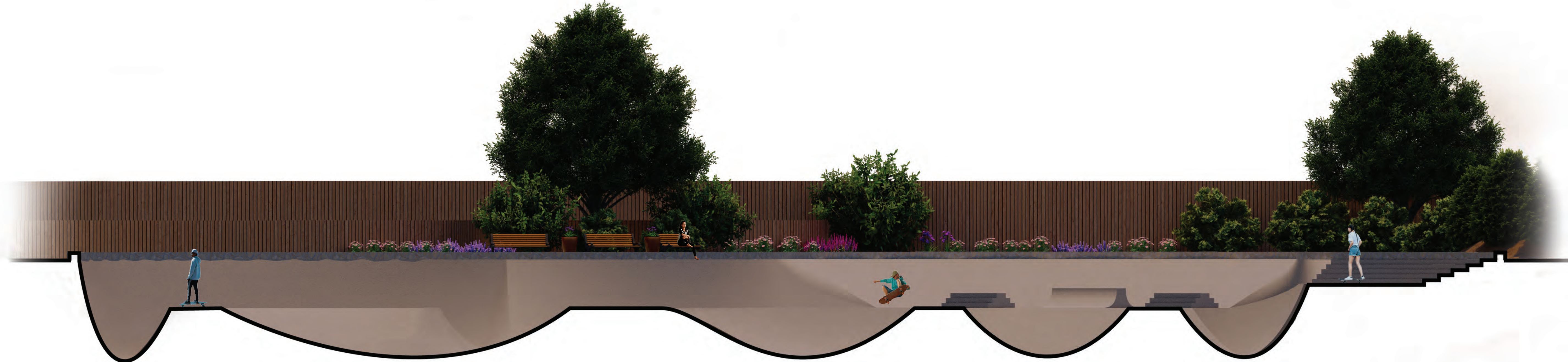
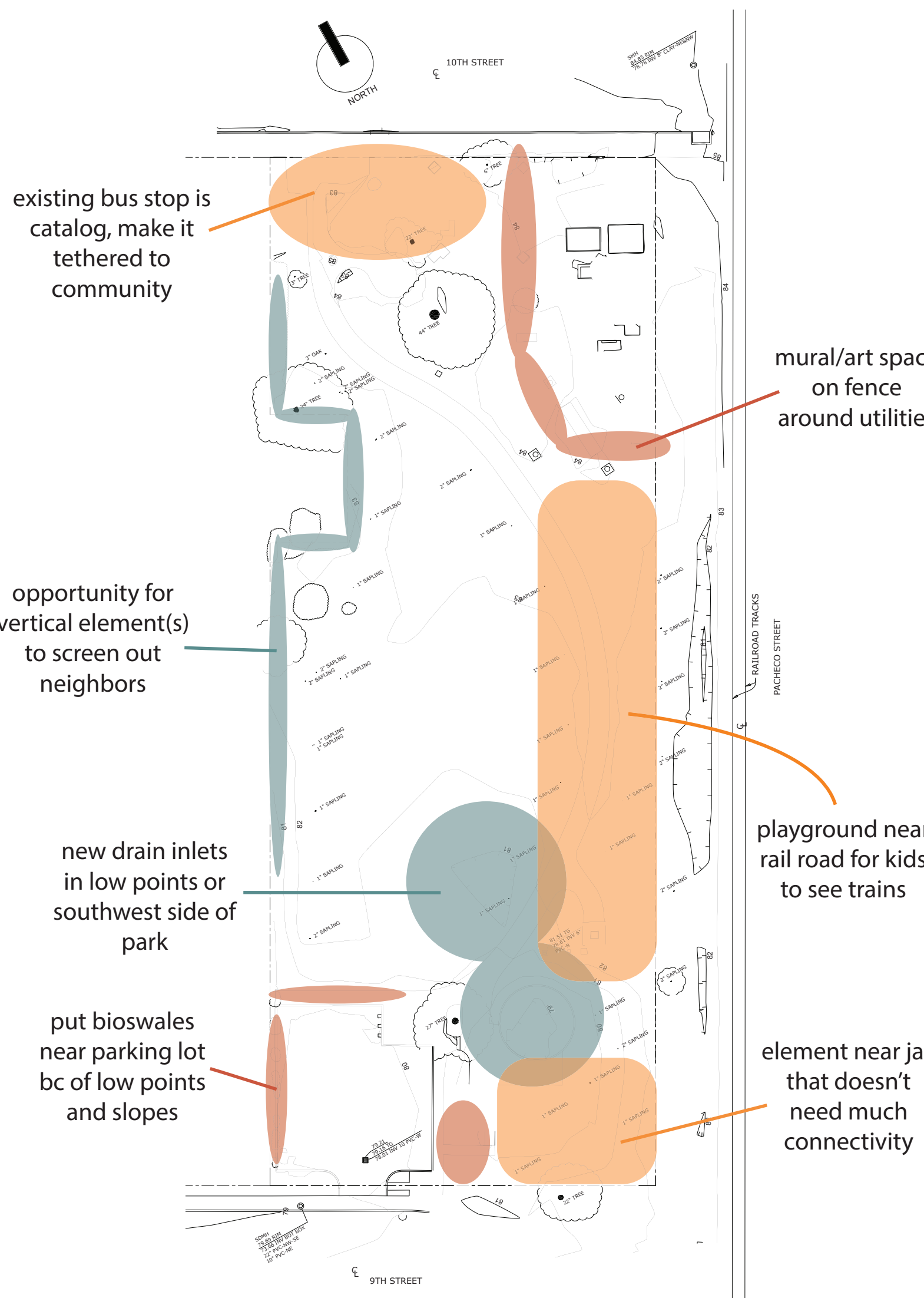
Circulation



Photos



analysis



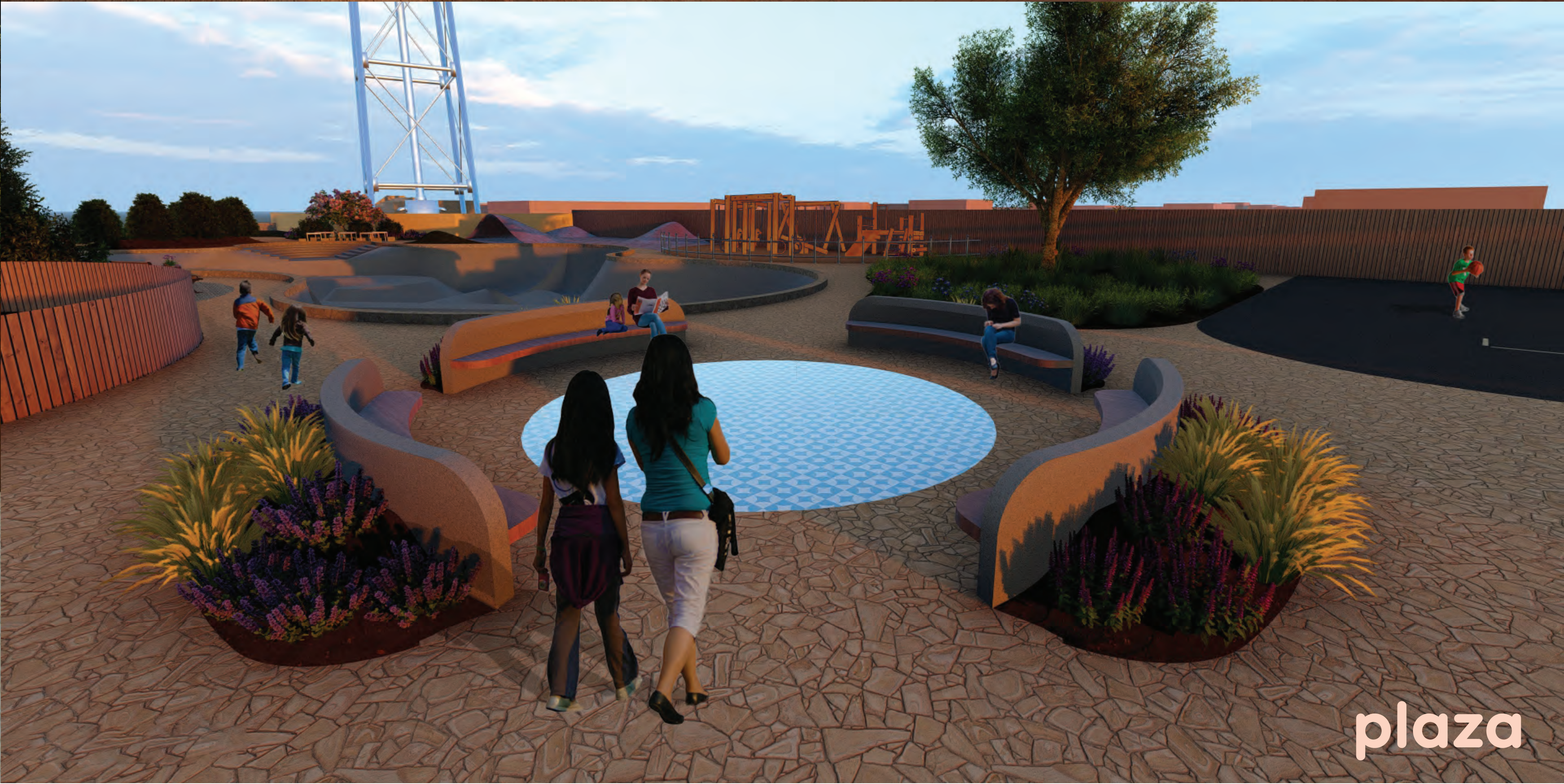
skate park section elevation



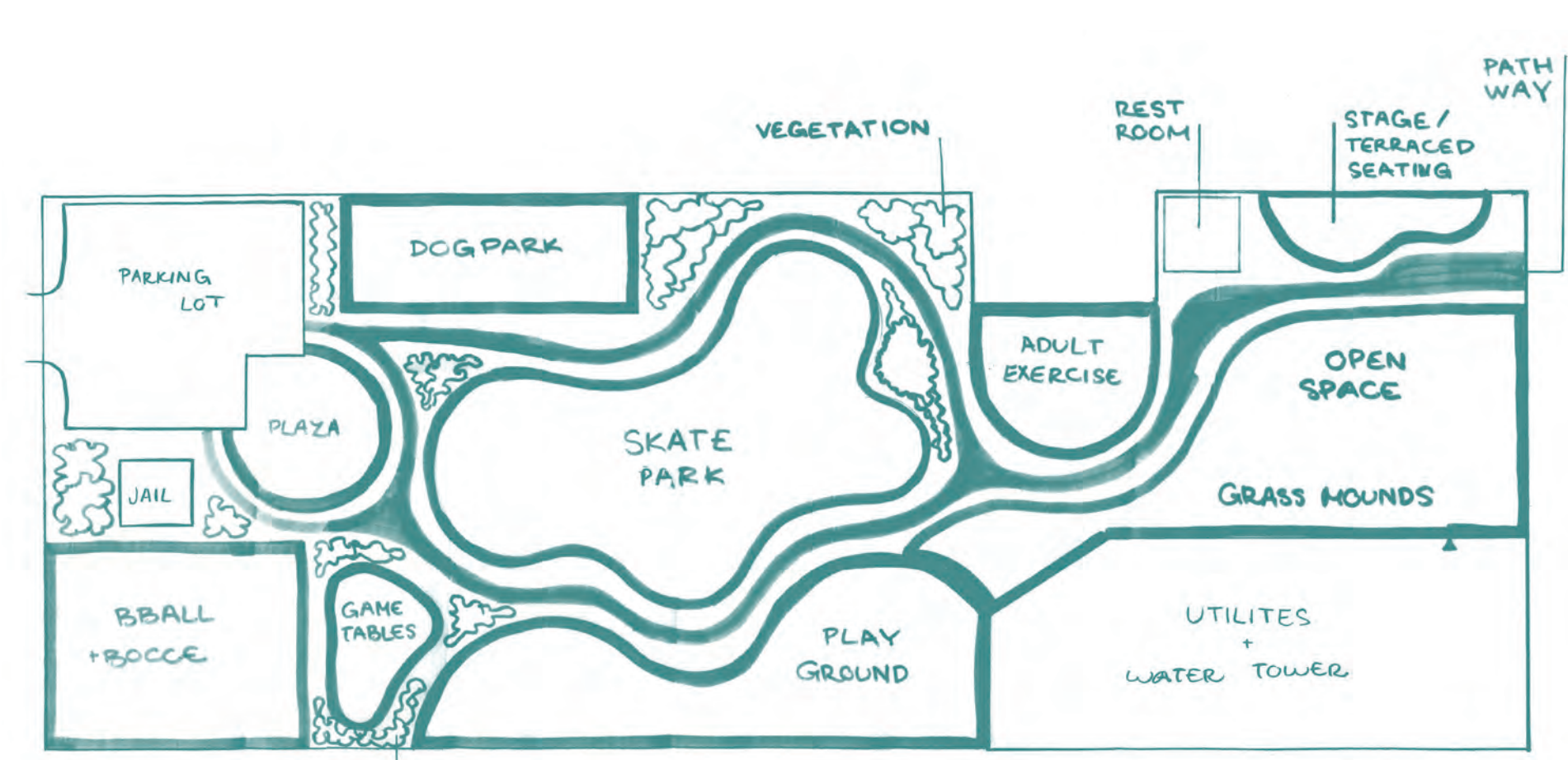
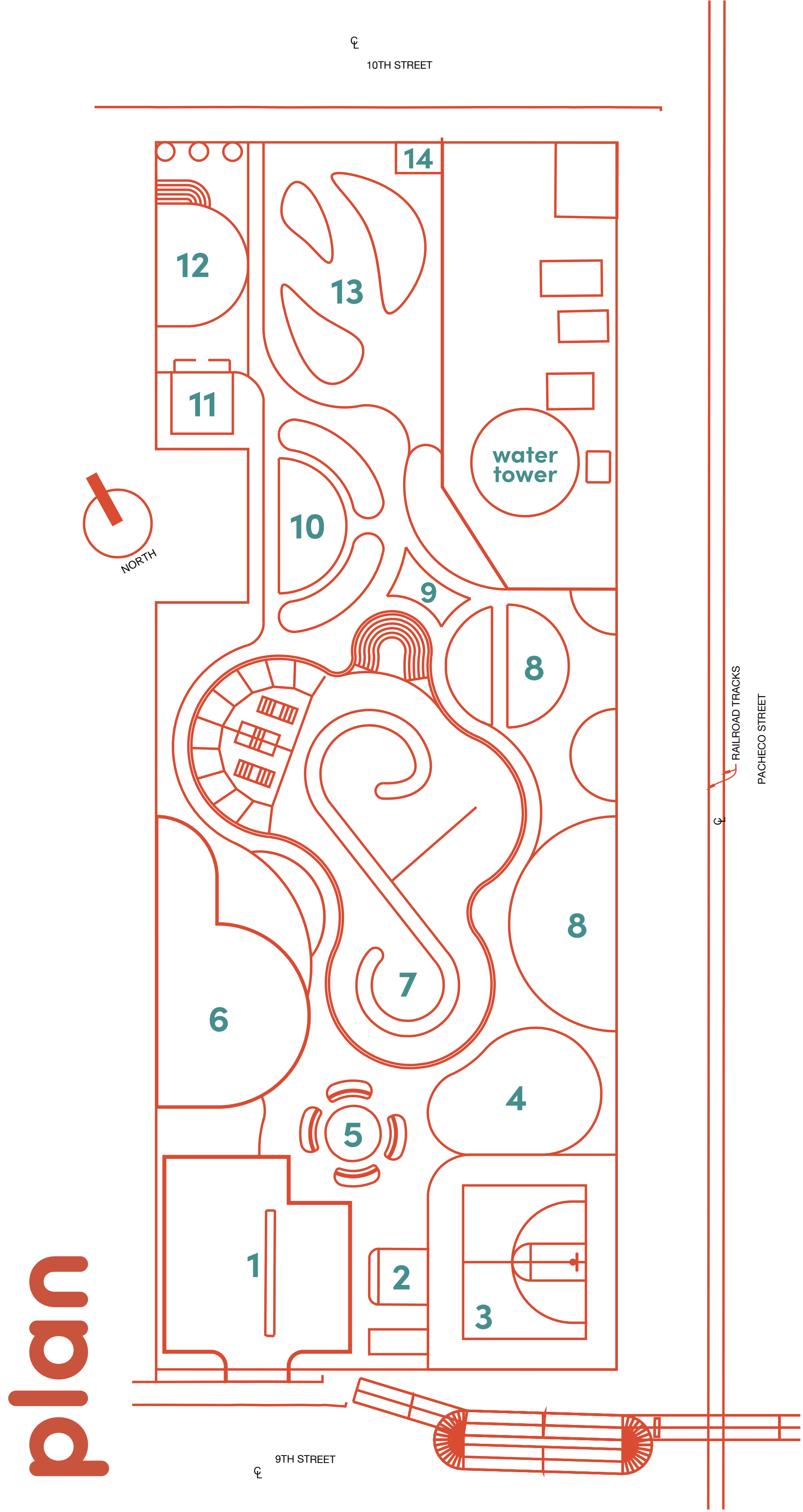
skate park



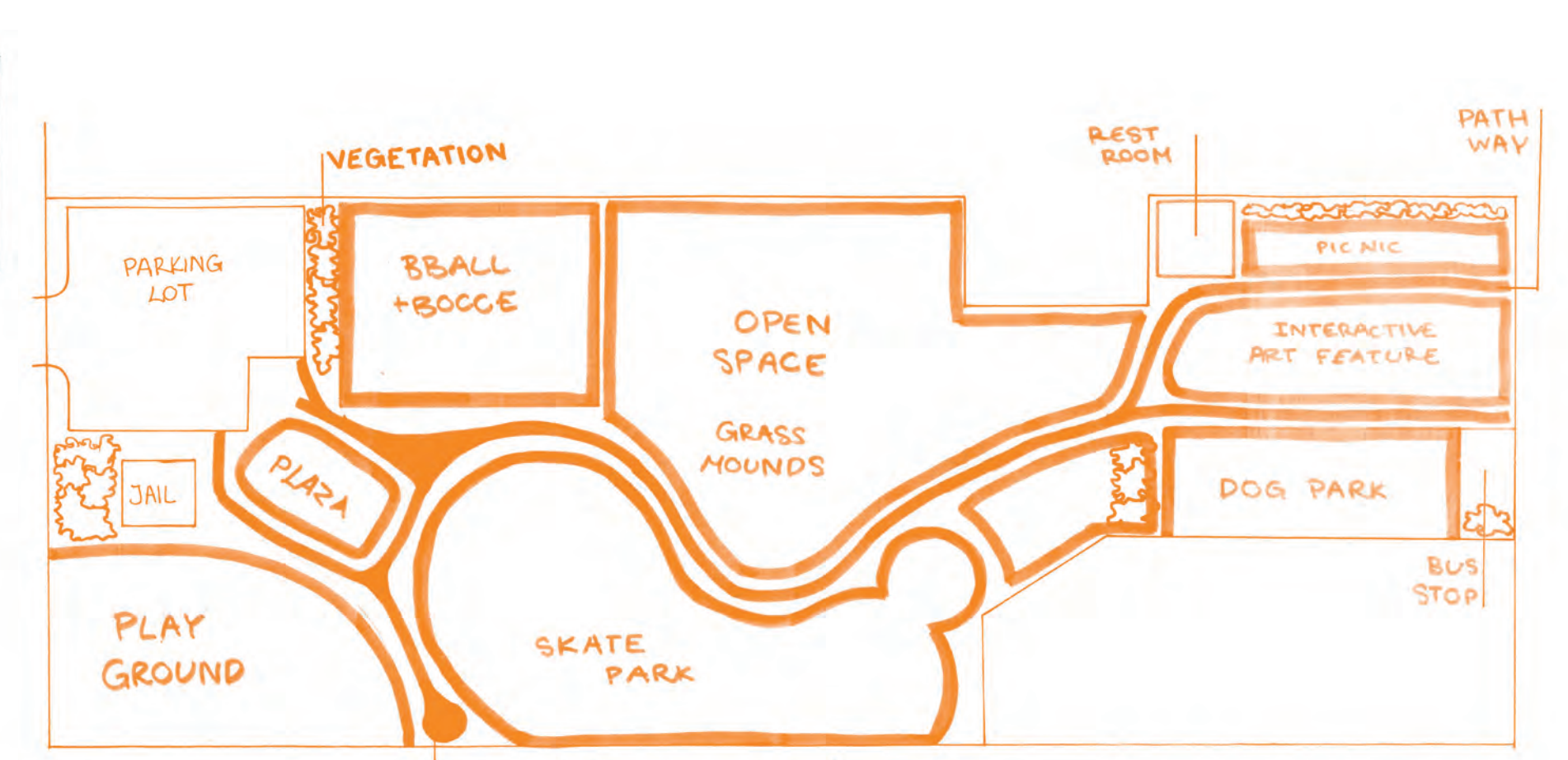
playground



plaza



Concept 1



Concept 2

planting strategy

area A
entry plants

Plants are low growing
ornamentals designed to
welcome visitors to the park
with splashes of color and
contrasting textures.

Example plants:



Ceanothus
Ceanothus



Hummingbird
Sage
Salviaspathacea



Deer Grass
*Muhlenbergia
rigens*

area B
bioswale plants

Plants are sitting in a low
point and are therefore
tolerable of high moisture and
standing water.

Example plants:



Western Redbud
*Cercis
occidentalis*



Douglas Iris
Iris douglasiana



Sedges
Carex

area C
skatepark plants

Expansive planter suitable for
layering trees, shrubs, and
perennials.

Example plants:



Valley Oak
Quercus lobata



Manzanita
*Arctostaphylos
spp.*



Sagebrush
Artemisia spp.



California
Buckwheat
*Eriogonum
fasciculatum*

area D
exercise plants

Mounds planted with large
shrubs create separation from
main pathway and climbing
plants add color to fence.

Example plants:



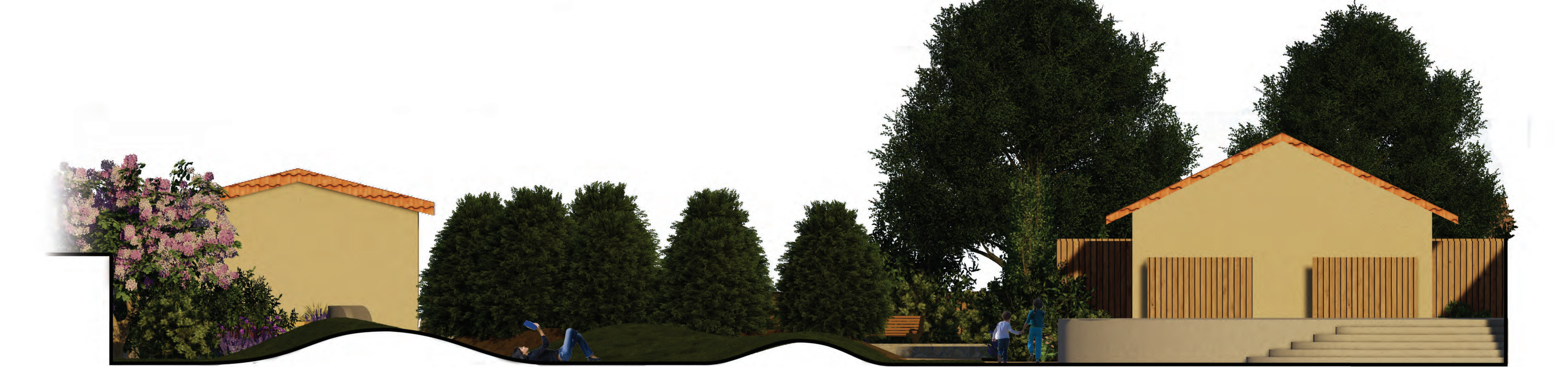
Toyon
*Heteromeles
arbutifolia*



Island Morning
Glory
*Calystegia
macrostegia*



Blue-eyed
Grass
*Sisyrinchium
bellum*



stage + lawn section elevation

Guadalupe Central Park

Mission:

Create a park that addresses the needs of the residents of Guadalupe.

Incorporate public art to create a space that resonates with the people of Guadalupe.

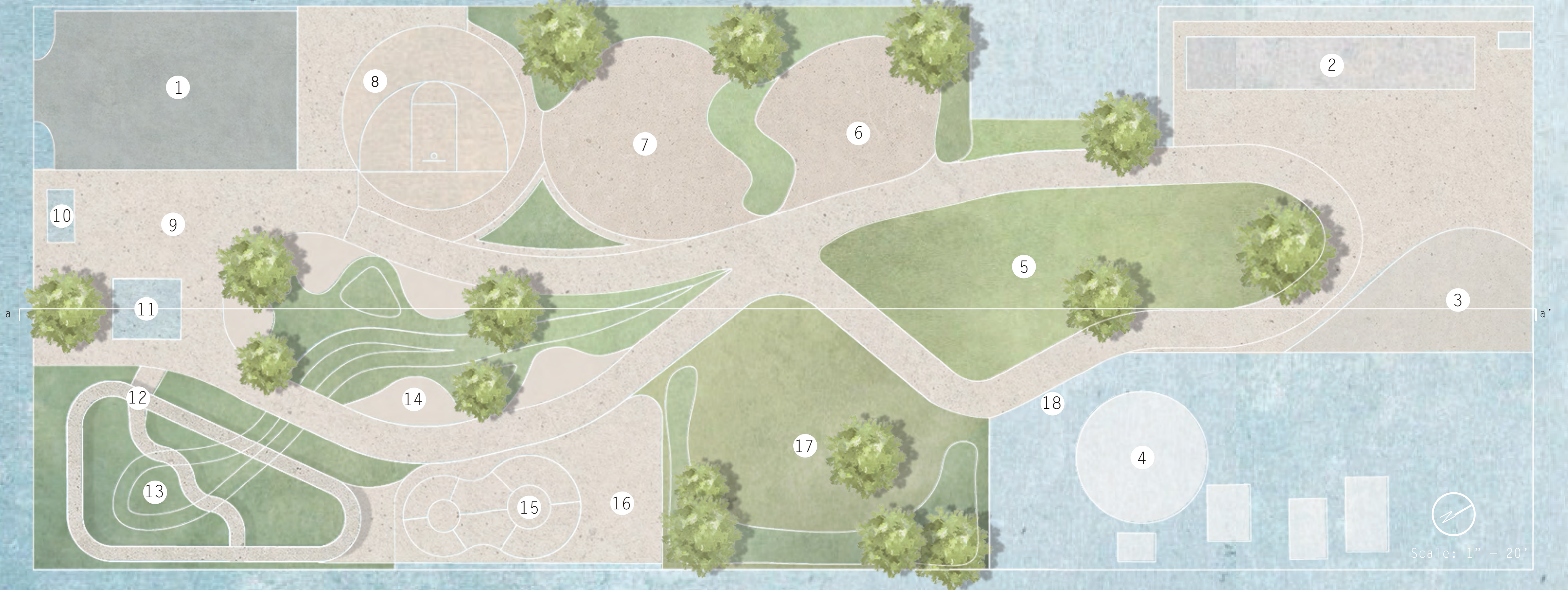
Address drainage and create a place for water to flow on and off-site.

Create a space that is inclusive for all people.



Program:

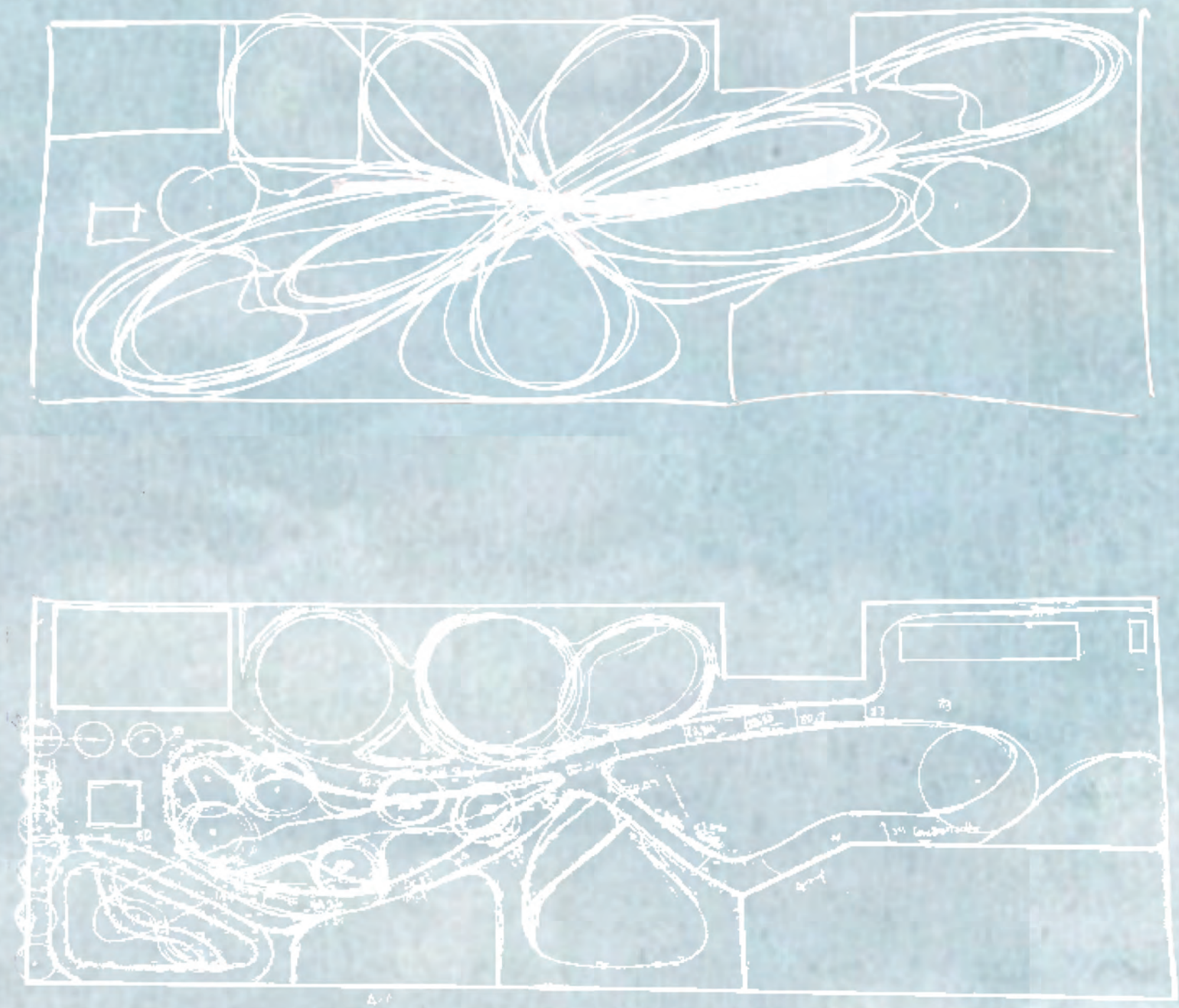
- | | | | |
|--------------------|------------------------|------------------|----------------------|
| 1 Parking Lot | 6 Big Kid Play Area | 11 Jail | 16 Street Skate Park |
| 2 Bocce Ball Court | 7 Little Kid Play Area | 12 Pump Track | 17 Dog Park |
| 3 Adult Exercise | 8 Basketball Court | 13 Bioswale | 18 Art Walk |
| 4 Water Tower | 9 BBQ area | 14 Picnic Tables | |
| 5 Open Turf | 10 Bathroom | 15 Skate Bowl | |



Pump Track



Process:



Skate Bowl



Emma Daniel
LA 402
Bret Betner
Fall 2022

Playground

