

CENTRAL PARK

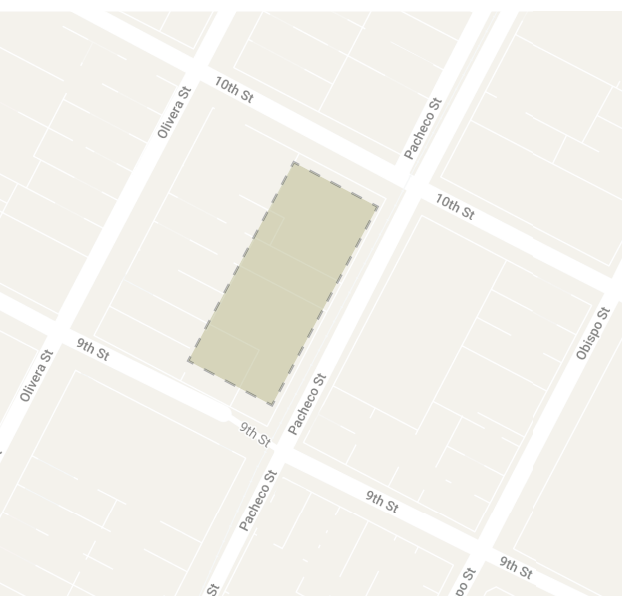
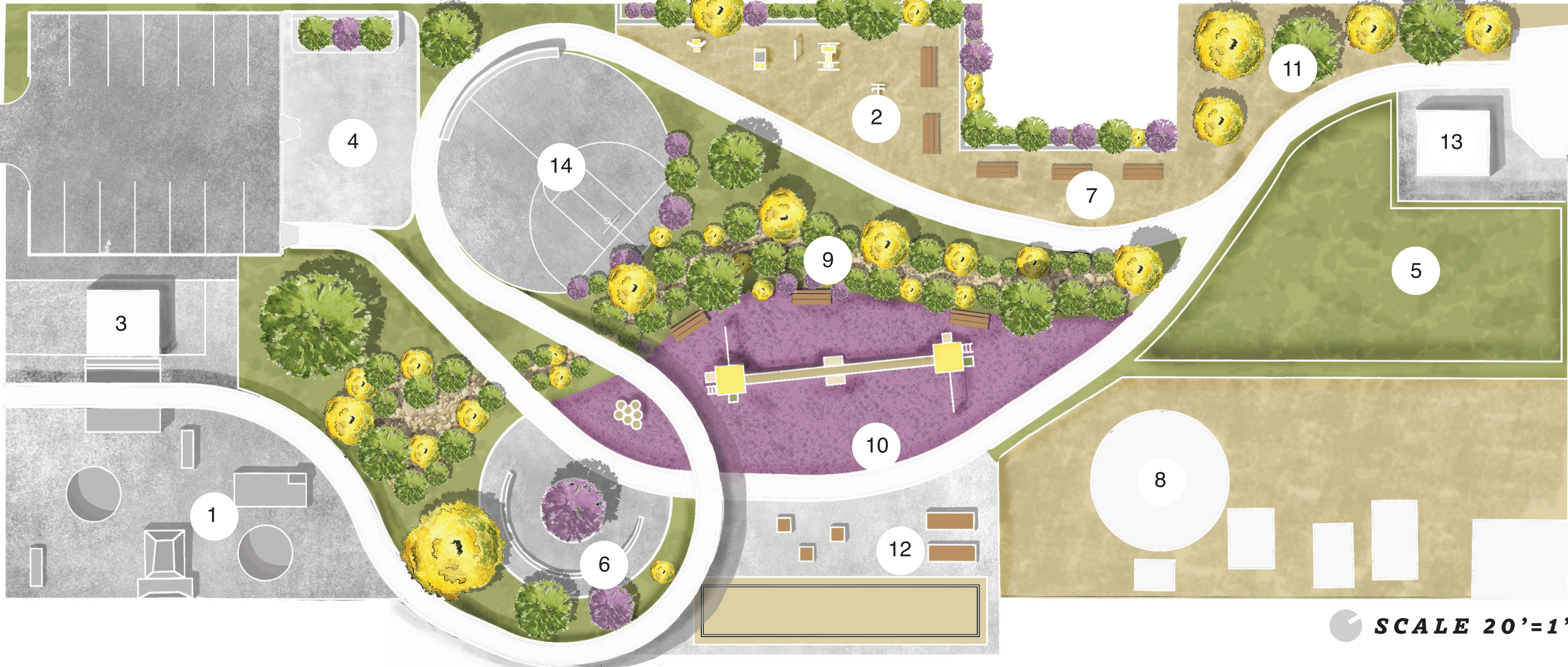


CONCEPT A

The first concept is an elevated walkway that starts in the parking lot and lowers to ground level at a field. However, the site is simply too small to start an elevated walk from ground level.

CONCEPT B

The second concept is to begin the walkway from the existing overpass that crosses the train tracks. This lets visitors experience a ground level path or see the park from above.



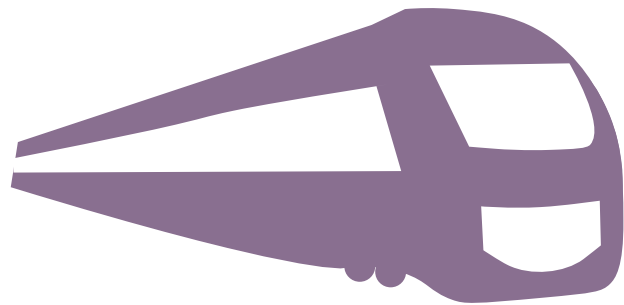
CONTEXT

Guadalupe is a small agricultural town located about forty minutes south of San Luis Obispo. Since the town is surrounded by agriculture fields, there is a watertower in the center of the town. This water tower is located in central park and can be seen from miles away. The intent of this design is to create an experience throughout the park, similar to the experience of driving into guadalupe. The elevated walkway creates a way to experience the park from above .



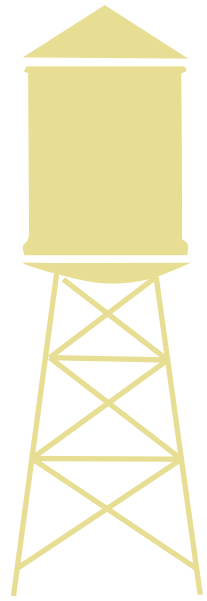
HYDROLOGY

The drainage of the current site is causing pooling in many locations throughout the park. By implementing a bioswale that begins on one side of the site and ends at the other, the water has a direction of flow.



NOISE

The amtrak that runs adjacent to the site causes noise pollution. In order to attempt to mitigate noise, this design implements planting and fences.



HEIGHT

The water tower is a major aspect of this park and by extension, the town. The water tower can be seen form miles away. By creating a space in the site where one can see the park from an elevated view, the height of the watertower is adressed.

- 1 SKATEPARK
- 2 ADULT EXERCISE
- 3 JAIL
- 4 PLAZA
- 5 DOG PARK
- 6 SEATING
- 7 PICNIC AREA
- 8 WATER TOWER
- 9 BIOSWALE
- 10 PLAYGROUND
- 11 CITRUS TREES
- 12 GAME AREA
- 13 BATHROOM
- 14 BASKETBALL COURT





CALIFORNIA SYCAMORE
Platanus racemosa



DEER GRASS
Muhlenbergia rigens



AUTUMN MOOR GRASS
Sesleria autumnalis



JARACANDA TREE
Jacaranda mimosifolia



FRENCH LAVENDER
Lavandula stoechas



CALIFORNIA GOLDENROD
Solidago velutina ssp.

