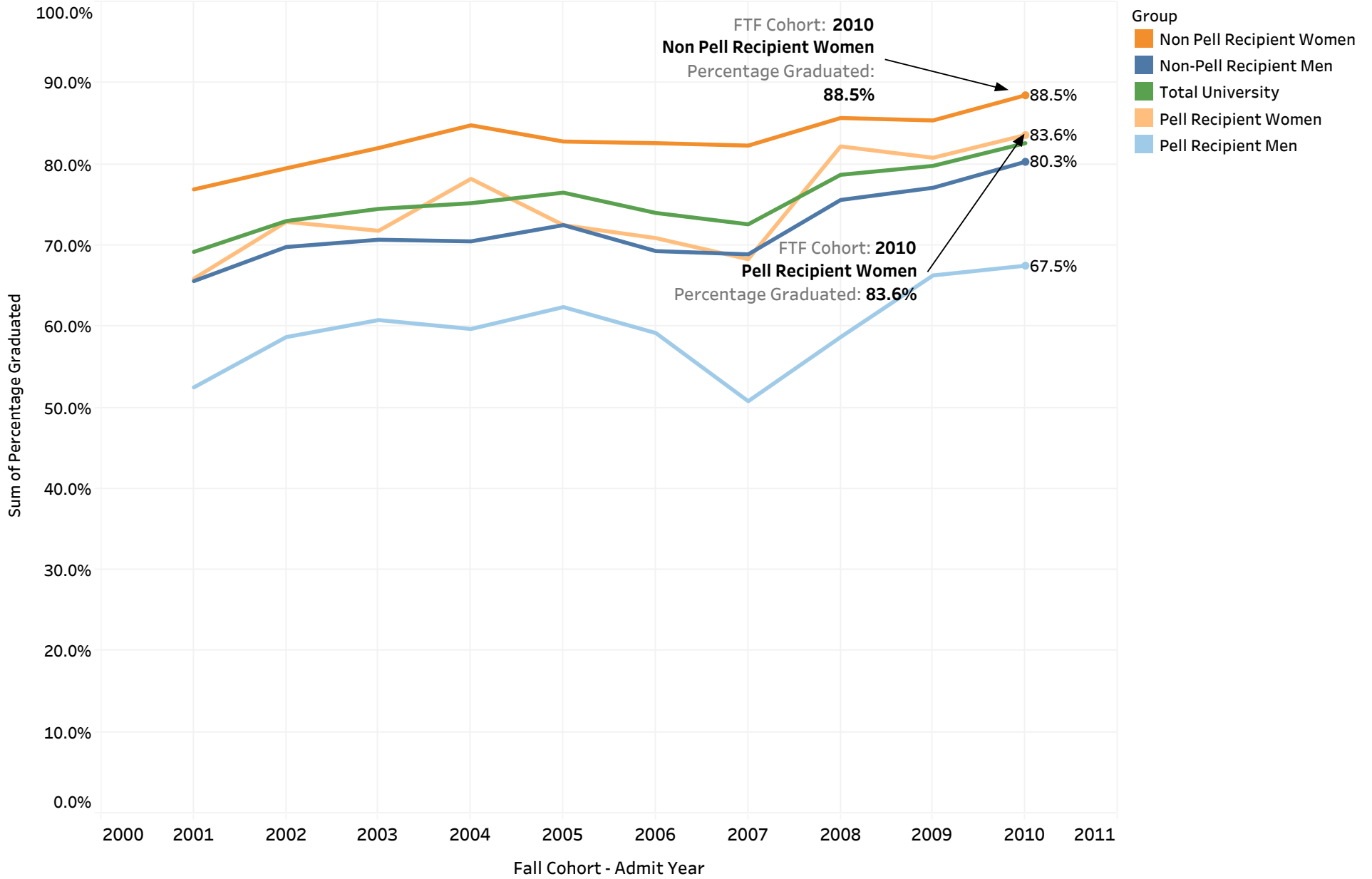


Cal Poly 6 year Graduation Rate Gender Gap - Pell Recipients over 10 Years



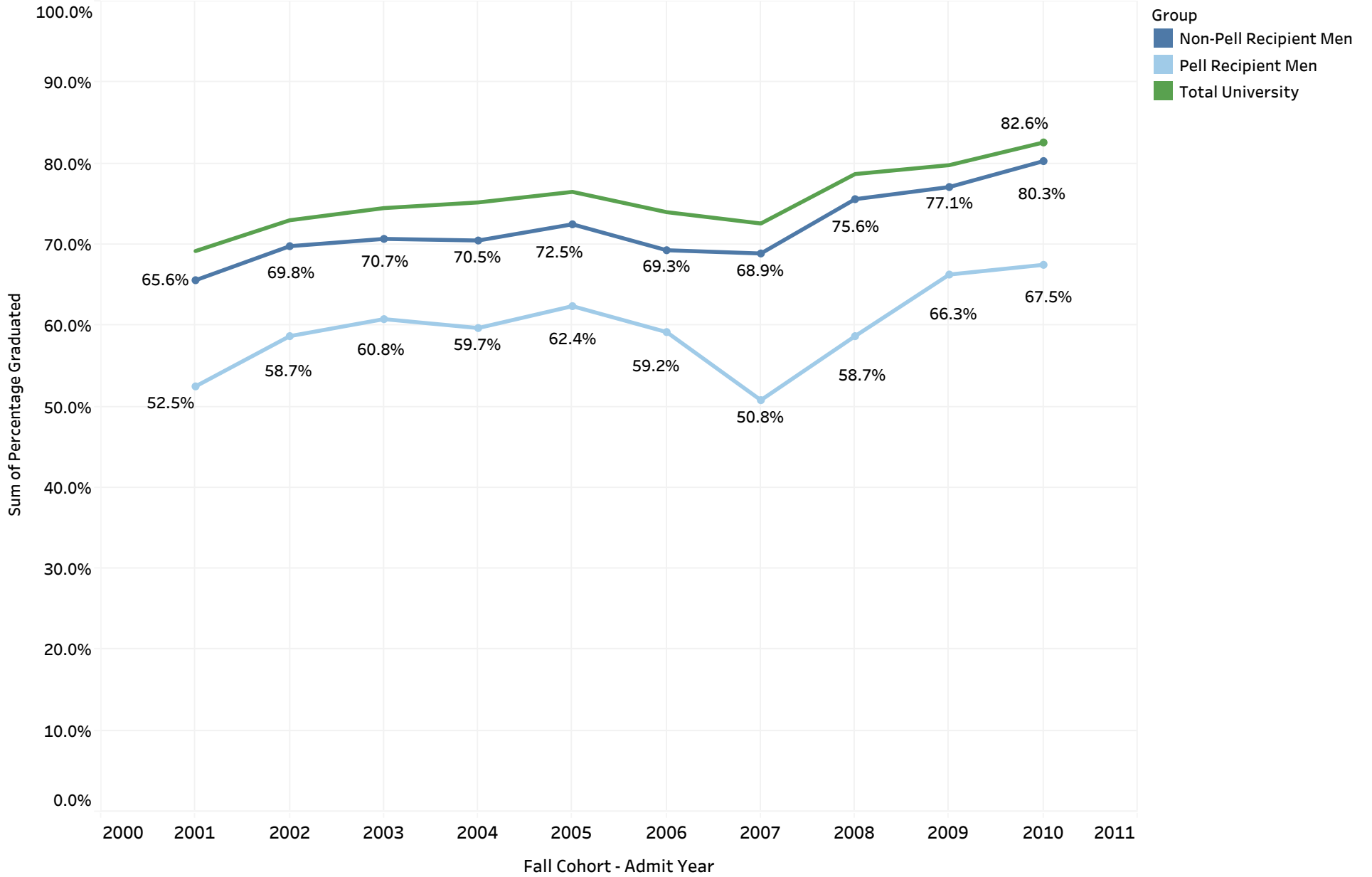
Cal Poly 6 year Graduation Rate Gender Gap - Pell Recipients over 10 Years

Group	Cohort Term									
	Fall 2001	Fall 2002	Fall 2003	Fall 2004	Fall 2005	Fall 2006	Fall 2007	Fall 2008	Fall 2009	Fall 2010
Non Pell Recipient Women	76.9%	79.5%	82.0%	84.8%	82.8%	82.6%	82.3%	85.7%	85.4%	88.5%
Pell Recipient Women	65.9%	72.9%	71.8%	78.2%	72.5%	70.9%	68.3%	82.2%	80.8%	83.6%
Total University	69.2%	73.0%	74.5%	75.2%	76.5%	74.0%	72.6%	78.7%	79.8%	82.6%
Non-Pell Recipient Men	65.6%	69.8%	70.7%	70.5%	72.5%	69.3%	68.9%	75.6%	77.1%	80.3%
Pell Recipient Men	52.5%	58.7%	60.8%	59.7%	62.4%	59.2%	50.8%	58.7%	66.3%	67.5%

Cal Poly 6 year Graduation Rate Gender Gap - Pell Recipients over 10 Years - Women - Pell vs Non Pell



Cal Poly 6 year Graduation Rate Gender Gap - Pell Recipients over 10 Years - Men - Pell vs Non Pell



Cal Poly 6 year Graduation Rate Gender Gap - Pell Recipients over 10 Years - Percent of GAP Pell vs Non Pell

