

CPMA: Student Data Overview

Gary R. Moser – Dir. IR

★ What is the Corps of Cadets? ★

A TRADITION OF LEADERSHIP. A FOUNDATION FOR LIFE.

The Corps of Cadets develops future leaders through a structured environment that builds **professionalism, teamwork, self-discipline, accountability, and leadership.**



MISSION & PURPOSE

Foster professionalism, teamwork, self-discipline, and accountability. Provide practical leadership experience through formations, watch standing, uniform standards, and a clear chain of command.

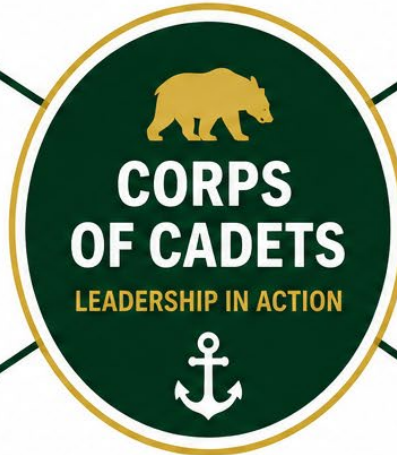


LEADERSHIP PROGRESSION

Growth and responsibility increase with your class standing:

4/C → 3/C → 2/C → 1/C

Every year prepares you to lead.



STRUCTURE

- Companies (by major)
- Divisions (1D-4D, 1E-4E, 1M-4M)
- Sections
- Squads

A proven structure that builds accountability at every level.



ACCOUNTABILITY

Watches, formations, and standards ensure we stay mission-ready—on campus, in port, and at sea. We lead ourselves and look out for each other.



WHO PARTICIPATES



LICENSE-TRACK CADETS

Participation in the Corps of Cadets is required for all U.S. Coast Guard merchant mariner license-track students.

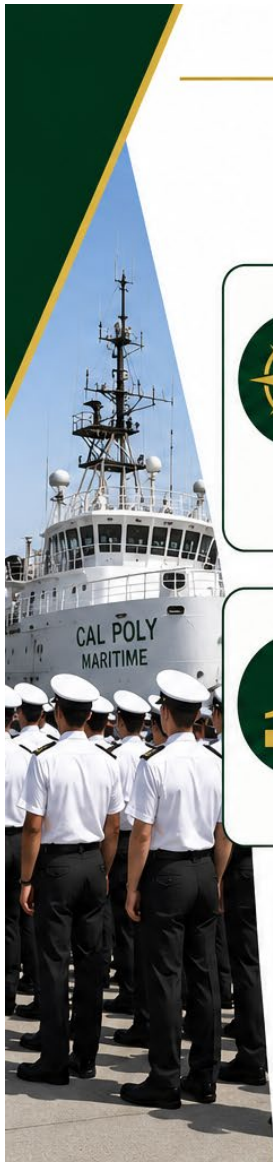
Leadership. Discipline. Opportunity.



ALL CADETS ARE WELCOME

Traditional university students may choose to participate and benefit from leadership development and lifelong connections.

Open to all. Built for leaders.



CAL POLY MARITIME ACADEMY






ACADEMIC PORTFOLIO

UNDERGRADUATE MAJORS (STATE-SUPPORTED)



LICENSED – COAST GUARD THIRD MATE UNLIMITED LICENSE & OICNW CERTIFICATION

Prepare students for U.S. Coast Guard Third Mate Unlimited License and international OICNW certification.





MAJOR & DESCRIPTION	ABBR.	COLLEGE
1  MARINE TRANSPORTATION <i>"Deck" – Navigation and deck-side ship operations</i>	MT	College of Agriculture, Food, Environmental Science
2  MARINE ENGINEERING TECHNOLOGY <i>"Engine" – Engine and ship system operations</i>	MET	College of Engineering
3  MECHANICAL ENGINEERING* <i>Two tracks: Traditional Mechanical Engineering or License-Track (also "Deck")</i>	ME	College of Engineering

* Only students who choose the License-Track are eligible for the Coast Guard license.




NON-LICENSED

Provide essential skills and knowledge for leadership, management, science, and global challenges.

MAJOR & DESCRIPTION	ABBR.	COLLEGE
4  FACILITIES ENGINEERING TECHNOLOGY <i>Manage & maintain systems to keep facilities running (hospitals, power plants, data centers, etc.)</i>	FET	College of Engineering
5  BUSINESS ADMINISTRATION <i>Global business strategy, logistics, supply chains</i>	BA	Orfalea College of Business
6  INTERNATIONAL STRATEGY AND SECURITY <i>Strategic studies across national, international and maritime domains—with emphasis on energy, environmental issues and global security challenges</i>	ISS	College of Liberal Arts
7  OCEANOGRAPHY <i>Ocean science, marine resource management or environmental policy</i>	OCN	Bailey College of Science and Math

ADDITIONAL GRADUATE PROGRAM (SELF-FUNDED)

8  TRANSPORTATION AND ENGINEERING MANAGEMENT (MS) <i>Mid-Career maritime and systems management</i>	TEM	Self-funded graduate program designed for mid-career professionals seeking advanced management and leadership skills.
---	------------	---

Cal Poly Maritime Academy Overall Enrollment Trends

Fall 2011 - Fall 2025

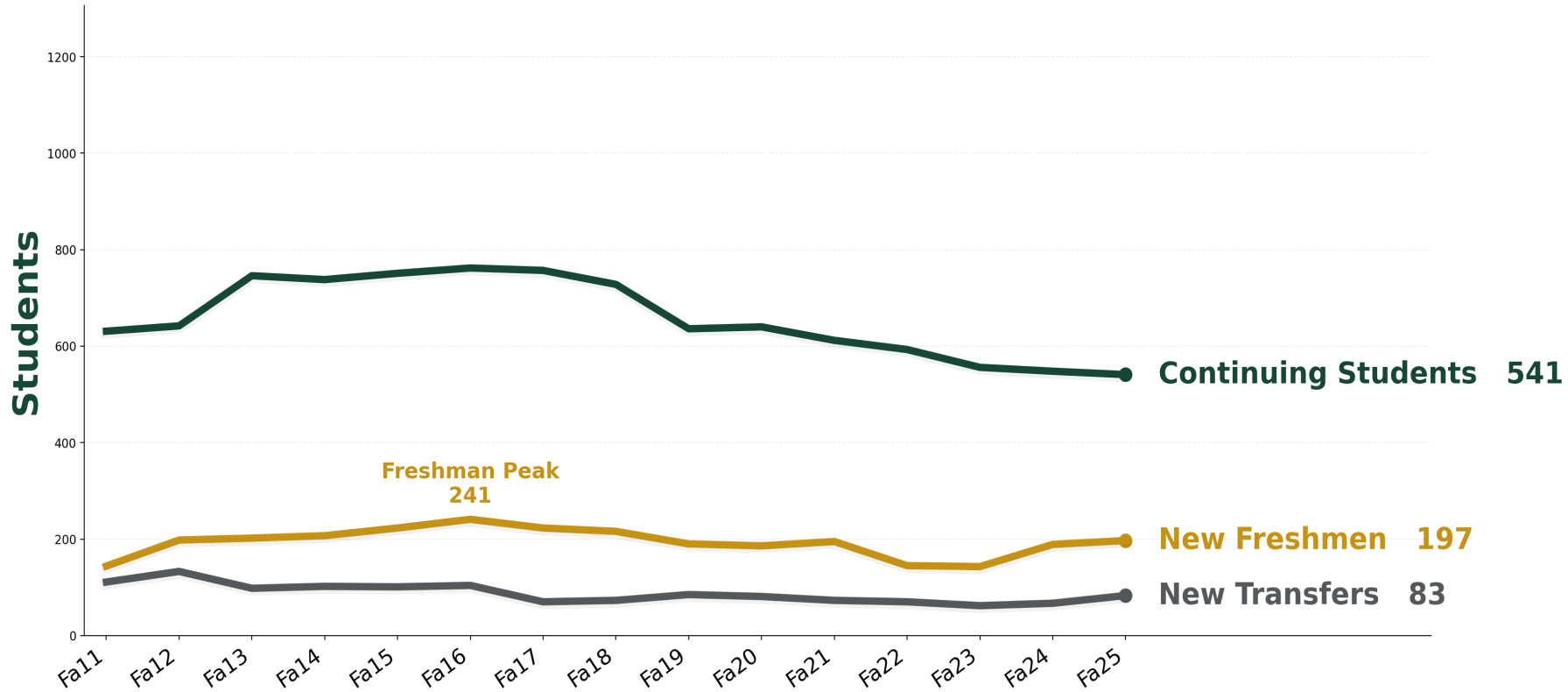
Enrollment declined from its mid-2010s peak but has recently stabilized despite significant disruptions across higher education.



Note: Data as of Fall 2025.

Enrollment Composition by Student Type

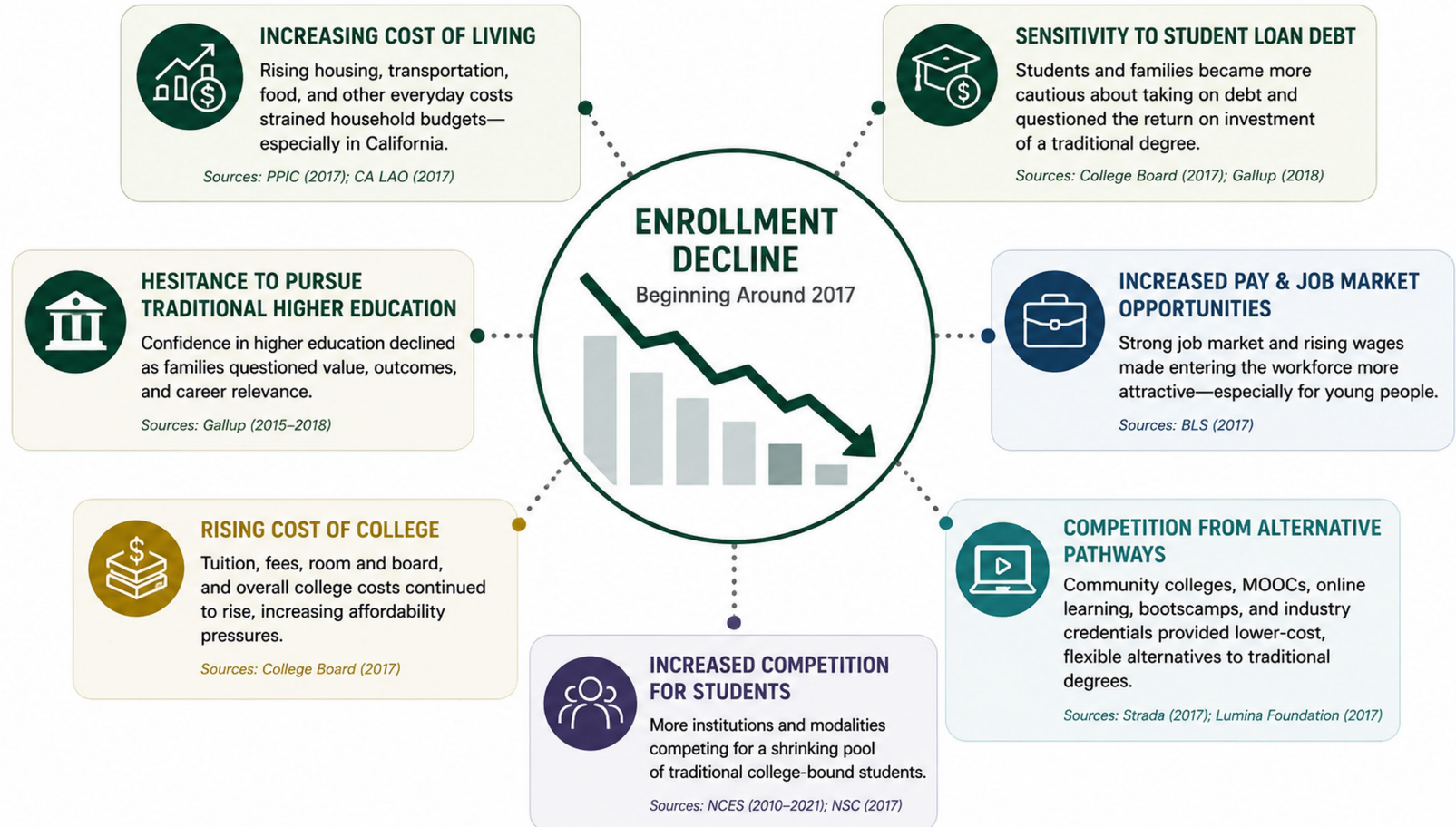
Fall 2011 - Fall 2025



Note: New freshmen and transfer students are identified using institutional first-time enrollment flags.

FACTORS CONTRIBUTING TO ENROLLMENT DECLINE

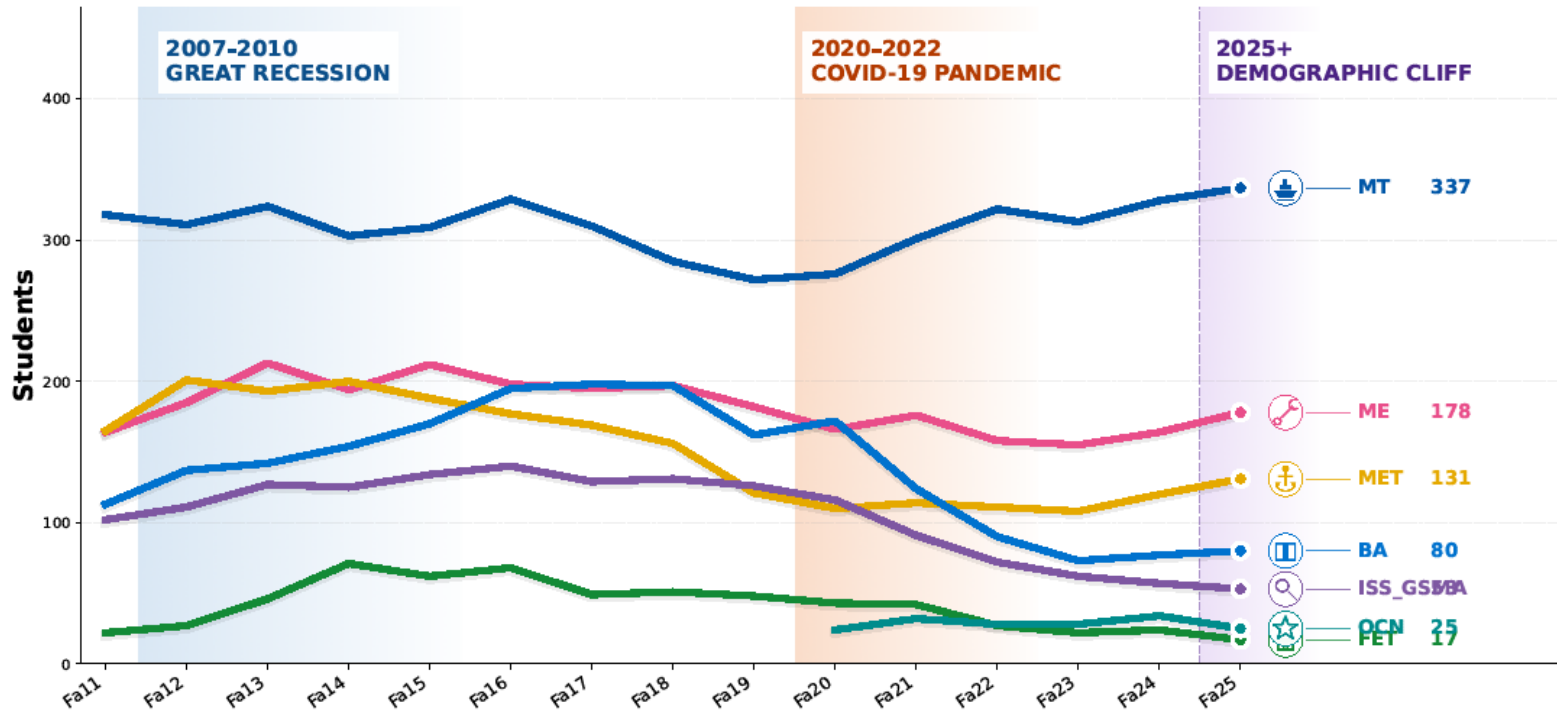
A BROADER HIGHER EDUCATION CONTEXT (POST-2016)



Enrollment

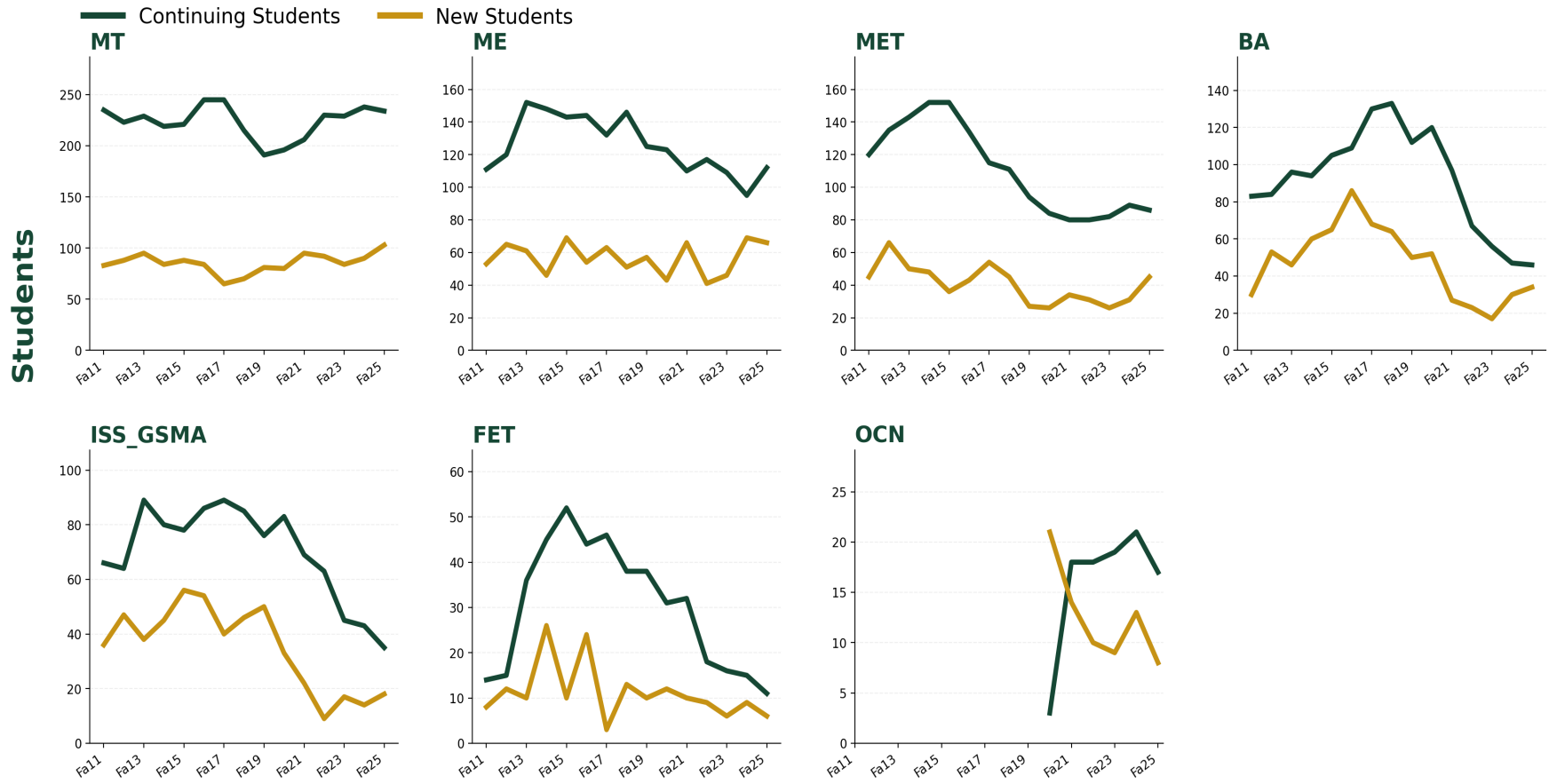
Cal Poly Maritime Academy Enrollment Trends by Major

Fall 2011 - Fall 2025



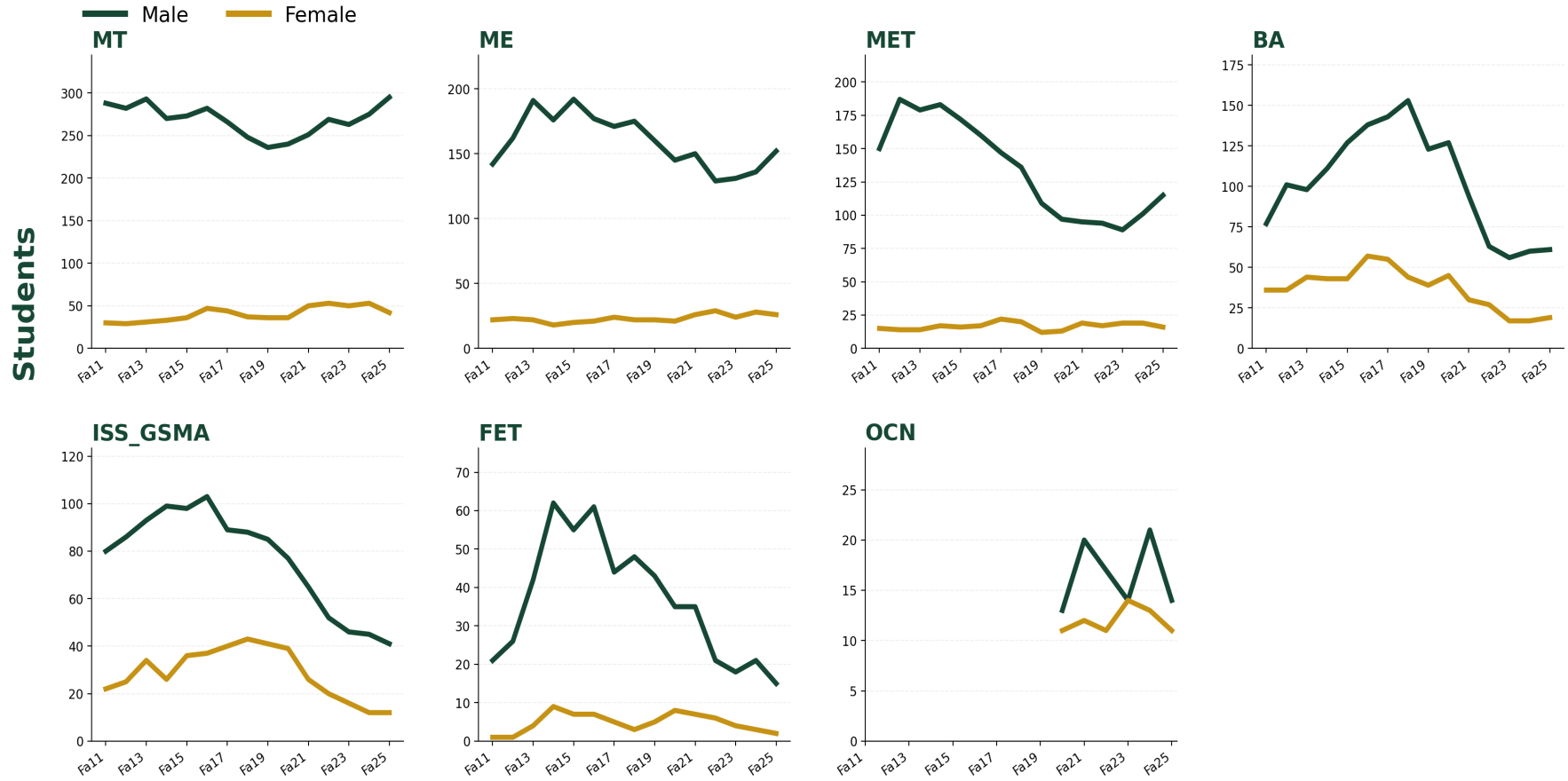
Enrollment by Major: New vs. Continuing Students

Fall 2011 - Fall 2025



Enrollment by Major and Gender

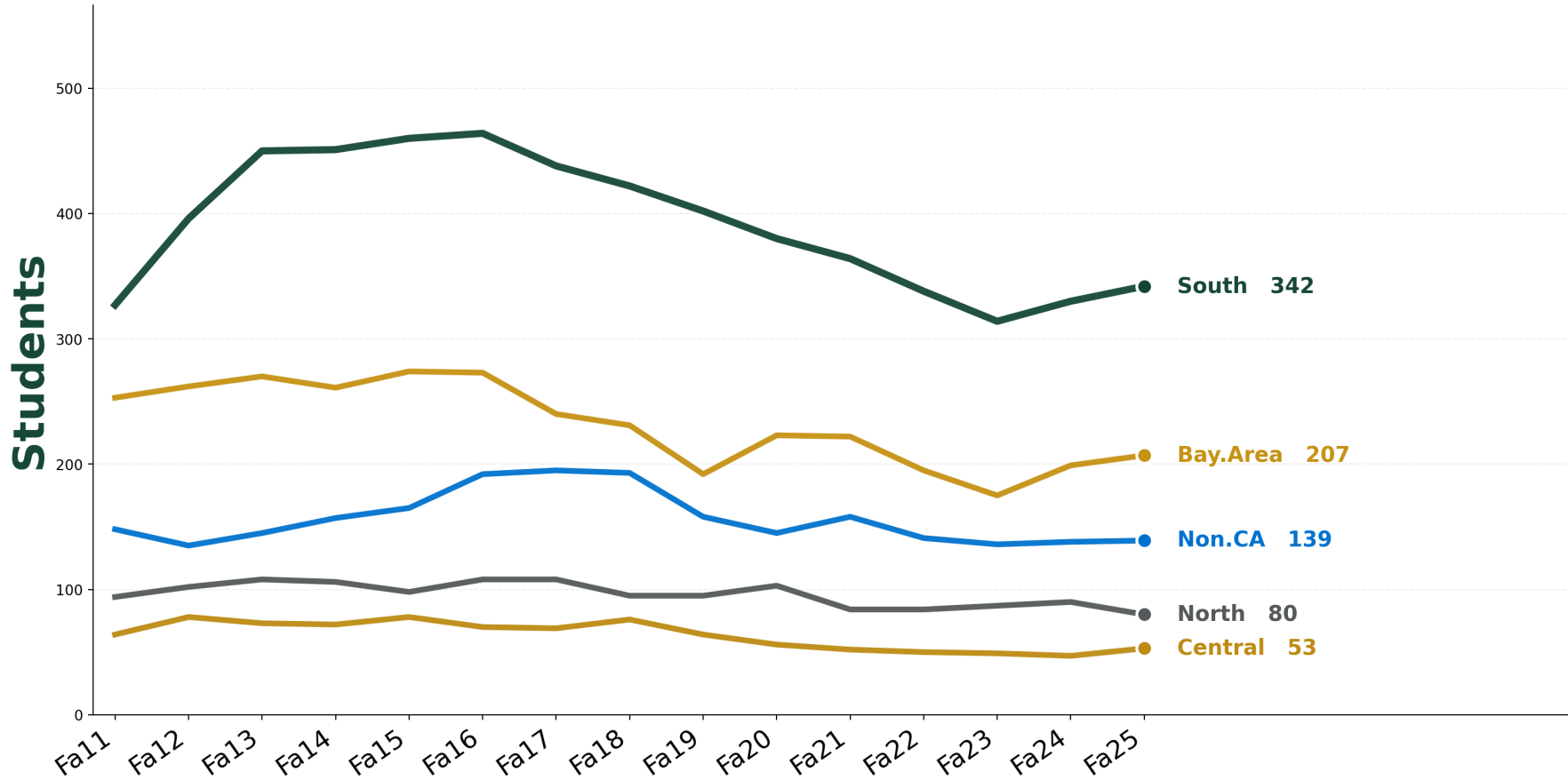
Fall 2011 - Fall 2025



Enrollment by California Region

Fall 2011 - Fall 2025

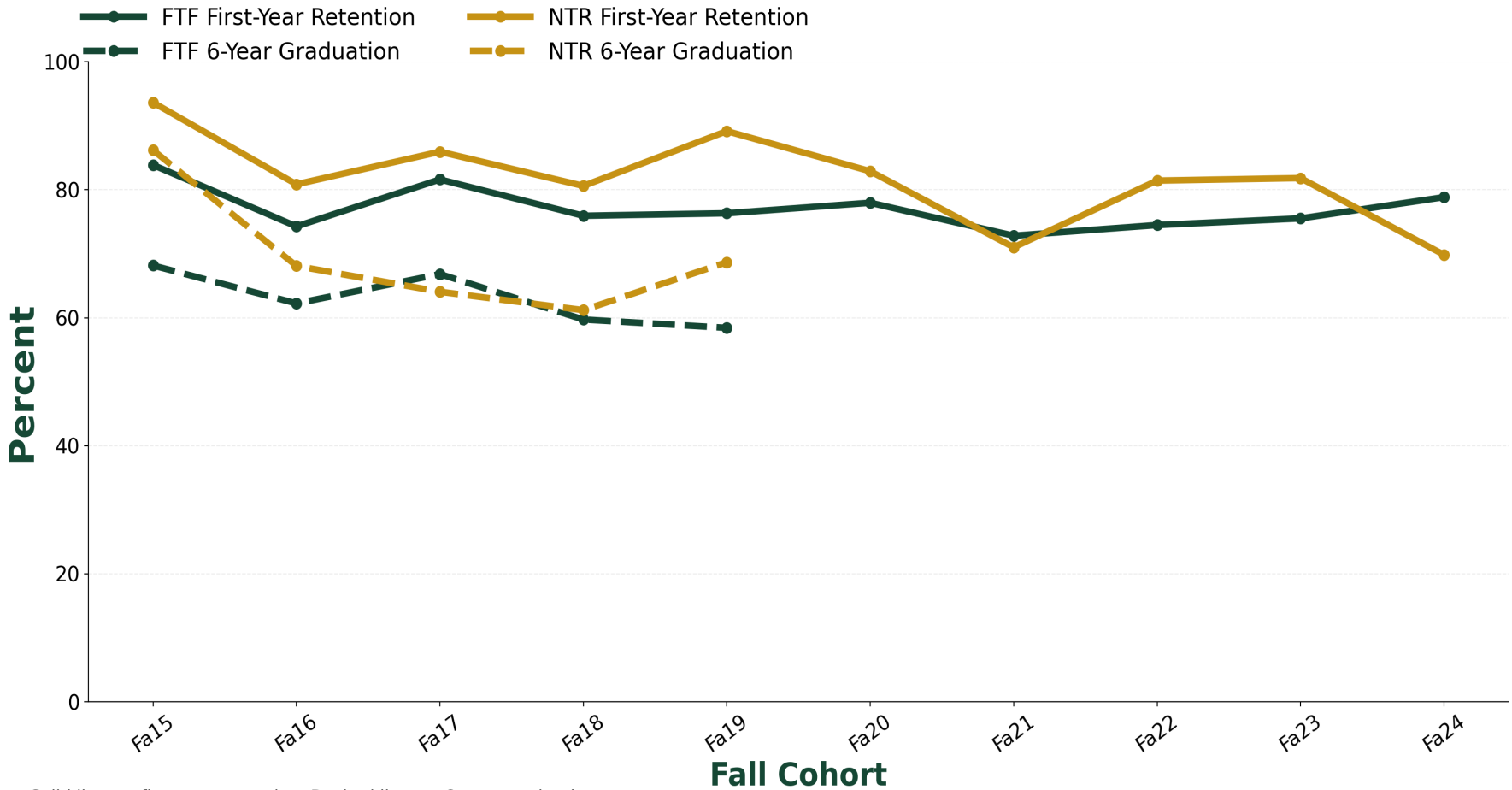
Regional enrollment patterns reflect the academy's statewide recruitment footprint.



Note: Smaller regional categories are combined into 'Other / Unknown' for readability.

Retention and Graduation Outcomes by Cohort Type

First-Time Freshmen (FTF) and New Transfers (NTR)



Solid lines = first-year retention. Dashed lines = 6-year graduation rates.



REASONS FOR OPTIMISM



Why Cal Poly Maritime Academy Is Well-Positioned for the Future



1. STRONG CONNECTION TO REAL-WORLD CAREERS

CPMA programs lead to in-demand careers in maritime, engineering, logistics, facilities, energy, defense, and ocean industries.
Clear pathways. Real jobs. Lasting impact.



2. MARITIME & LOGISTICS RELEVANCE IS GROWING

Global supply chains, port infrastructure, domestic industrial capacity, and maritime security have never been more critical.
Rising national awareness. Increasing demand.



3. SPECIALIZED INSTITUTIONS ARE DIFFERENTIATED

CPMA's unique mission, hands-on learning, and professional pathways set it apart from undifferentiated institutions.
Distinctive identity drives lasting value.



4. DIVERSIFYING AND EXPANDING STUDENT BODY

Broader geographic and demographic reach reflects growing access and a more inclusive academy community.
A stronger, more diverse future.



5. TRANSFER PATHWAYS CREATE OPPORTUNITY

Strong transfer enrollment aligns with CSU priorities and provides affordable, flexible pathways into high-value careers.
Right pathway. Right place. Right time.



6. APPLIED STEM FIELDS REMAIN RESILIENT

Engineering, technology, logistics, and other applied STEM fields continue to be among the most resilient and in-demand.
High value. High need. Strong outlook.



7. INTEGRATION WITH CAL POLY SLO IS A FORCE MULTIPLIER

Stronger visibility, branding, resources, and interdisciplinary collaboration enhance CPMA's ability to recruit, educate, and lead.
One mission. Greater impact.



CPMA is built for today's needs and tomorrow's opportunities.

POSITIONED DIFFERENTLY. PREPARED FOR WHAT'S NEXT.



While higher education faces significant headwinds, institutions with a clear mission, workforce alignment, and hands-on learning are best positioned to thrive.
CPMA is one of those institutions.



A PROUD MARITIME HERITAGE. • A RELEVANT TODAY. • A STRONGER TOMORROW.



The End

