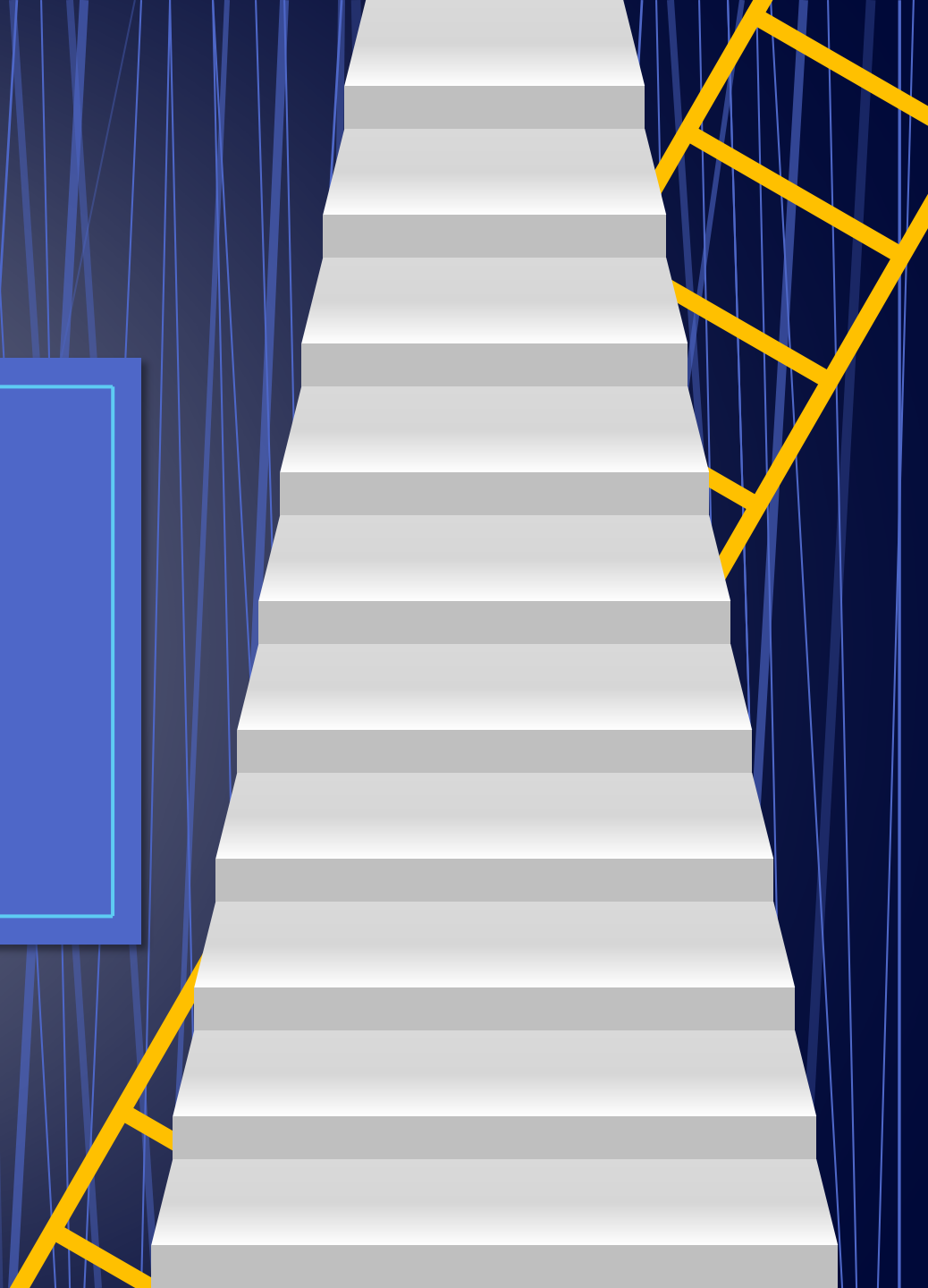


Stairway to Heaven Game

Alexis Weckel



Agenda

- Introduction
- Design
- Manufacture
- Assembly
- Conclusion

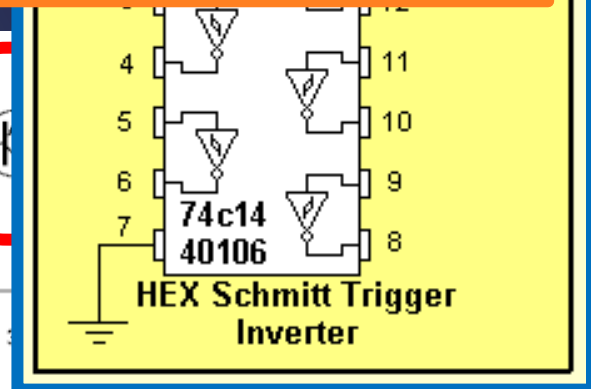
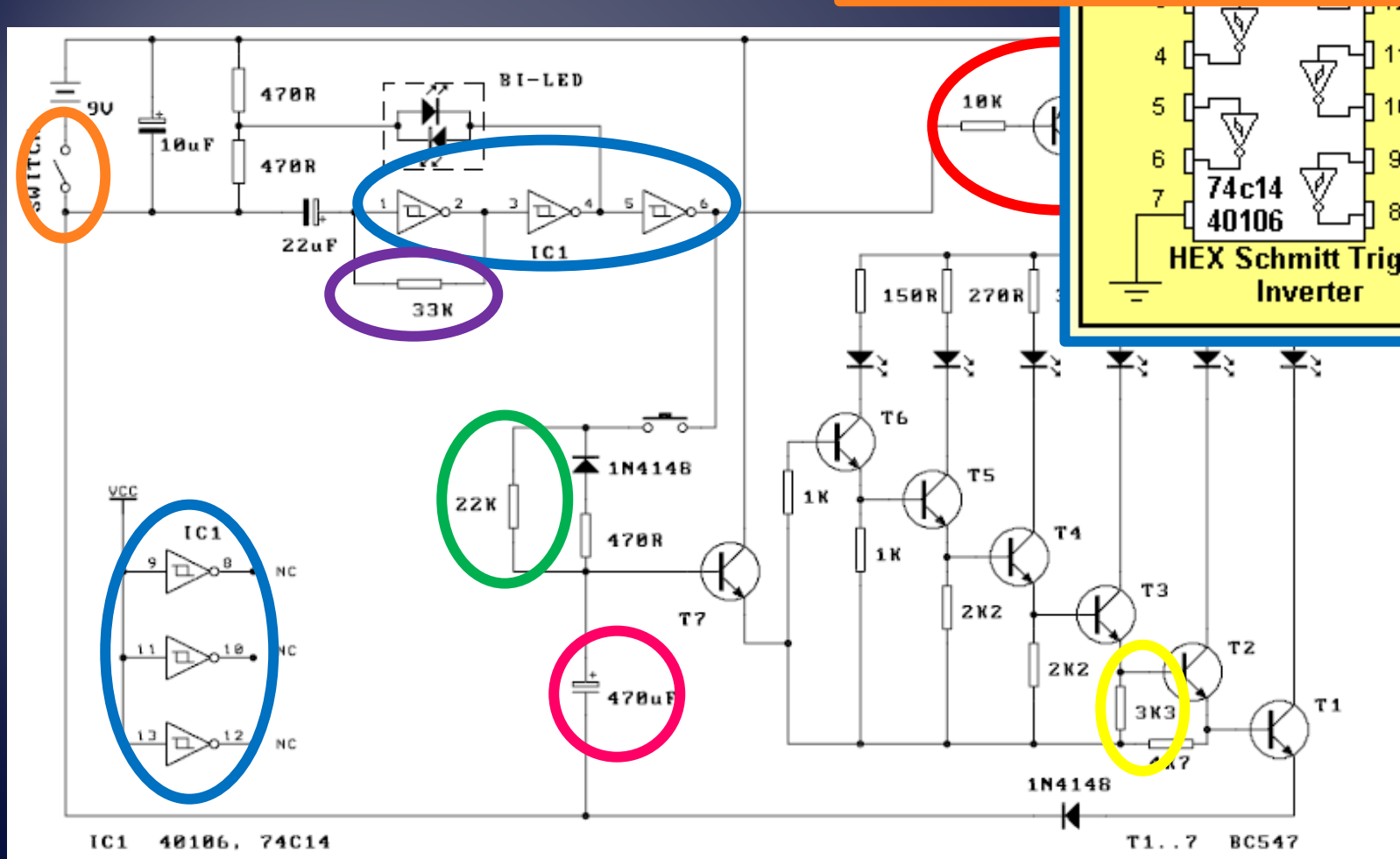
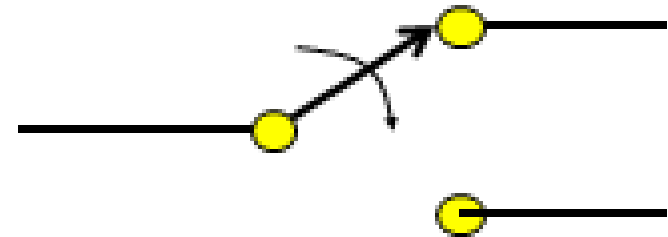
Introduction



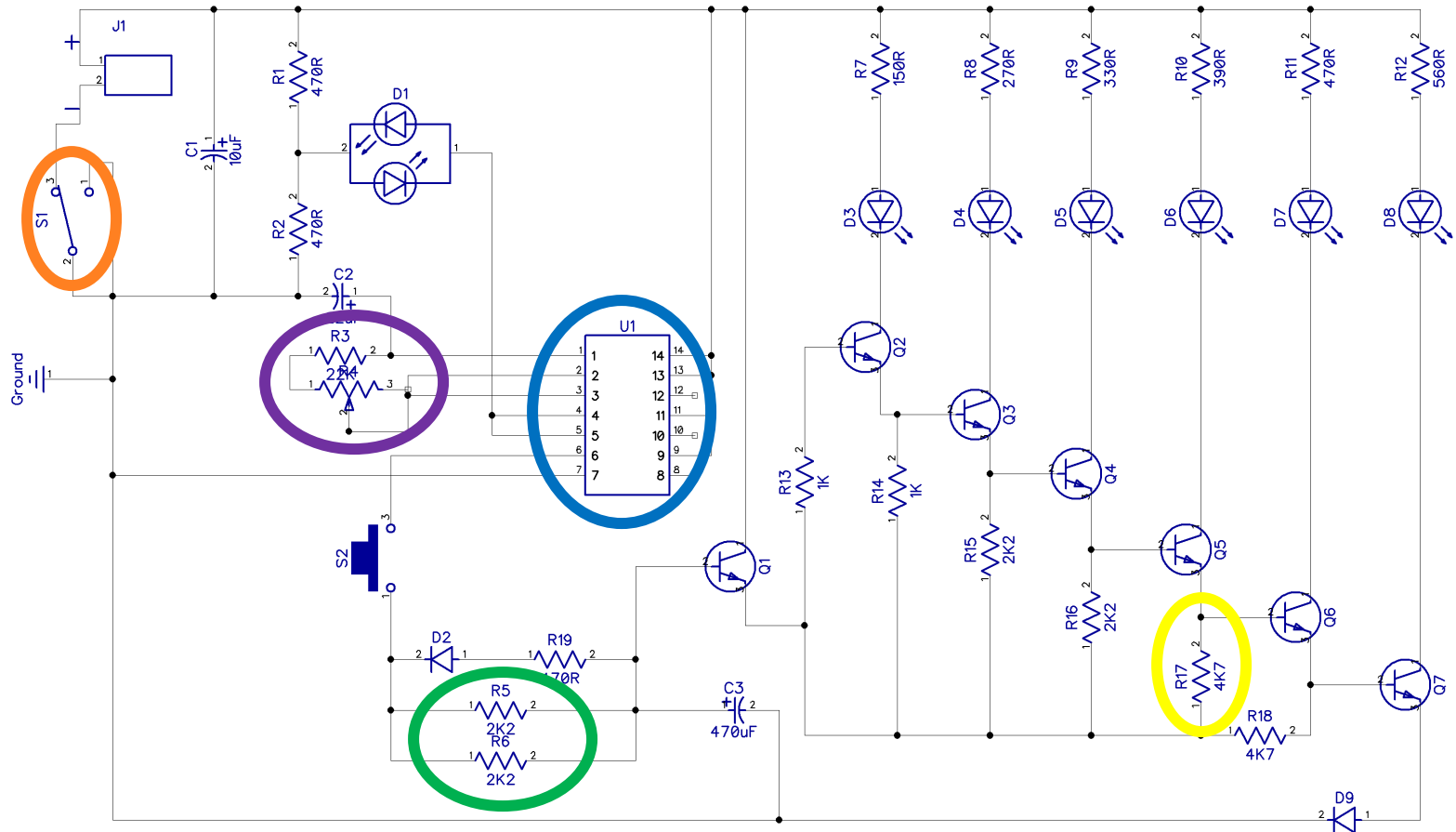


Design

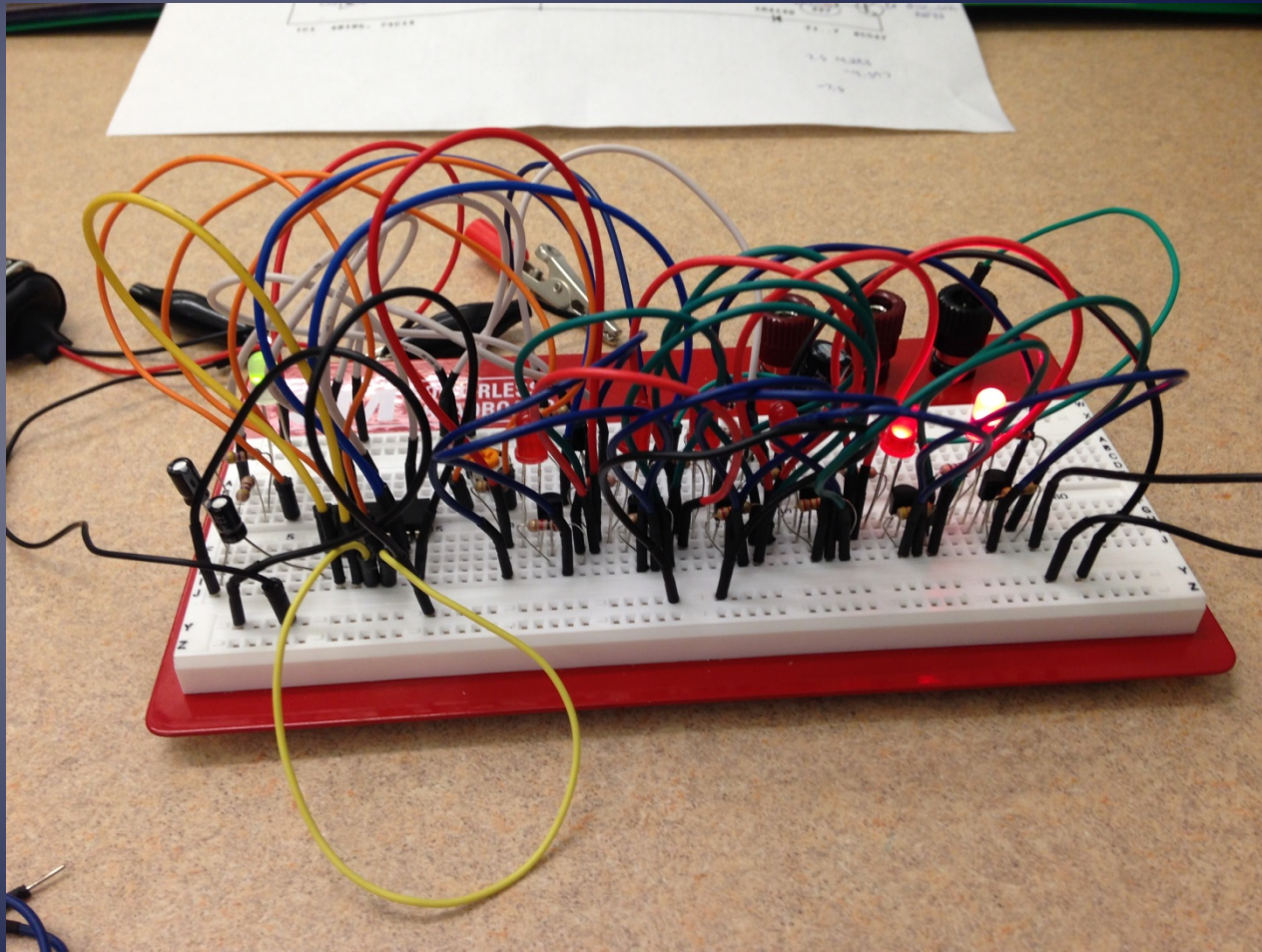
Kit Schematic



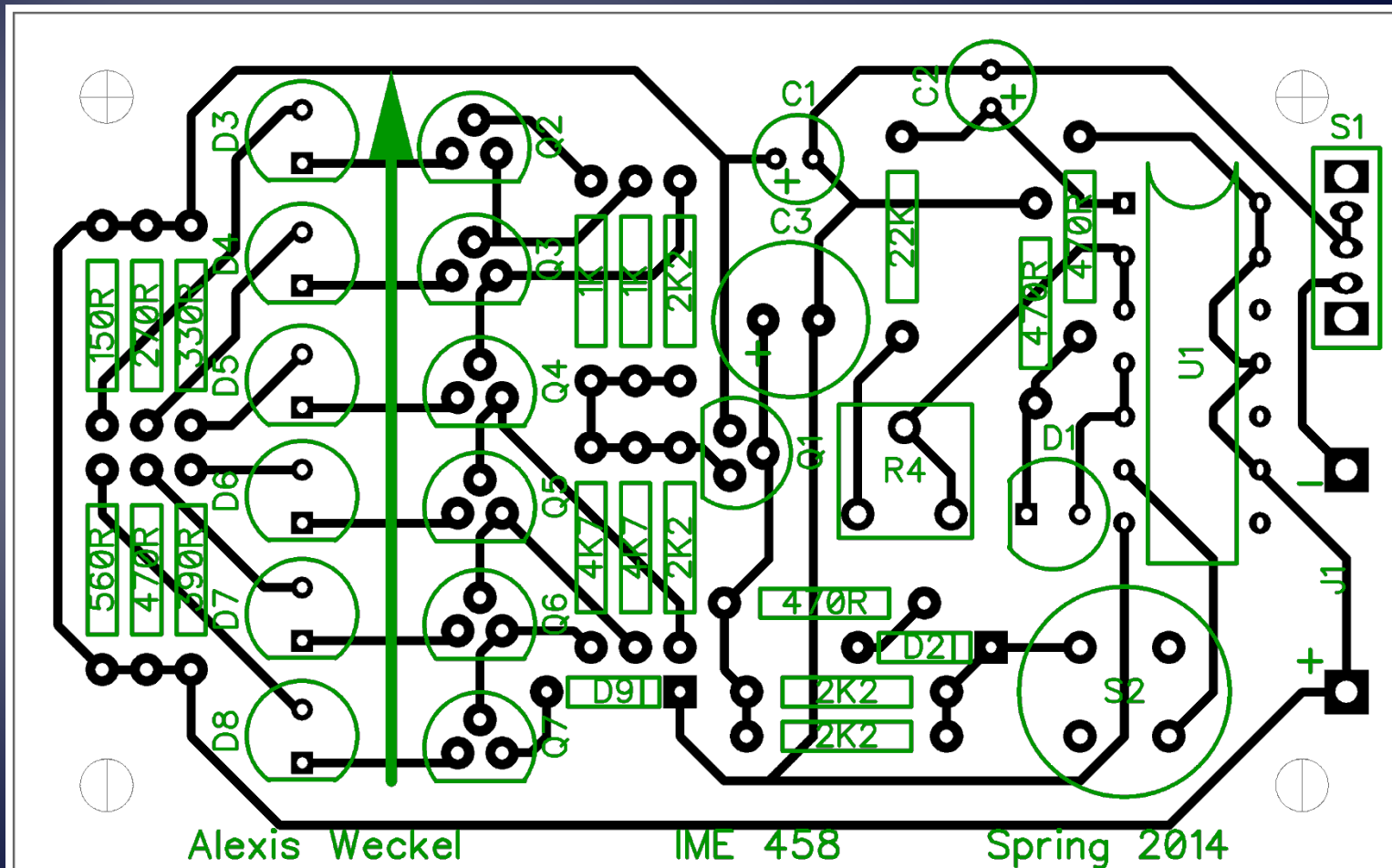
My Schematic



Working on Breadboard

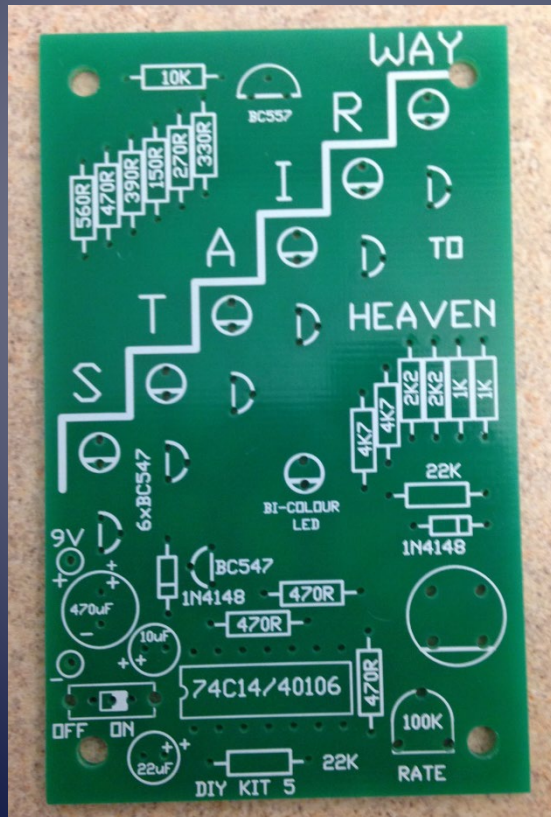


My Layout

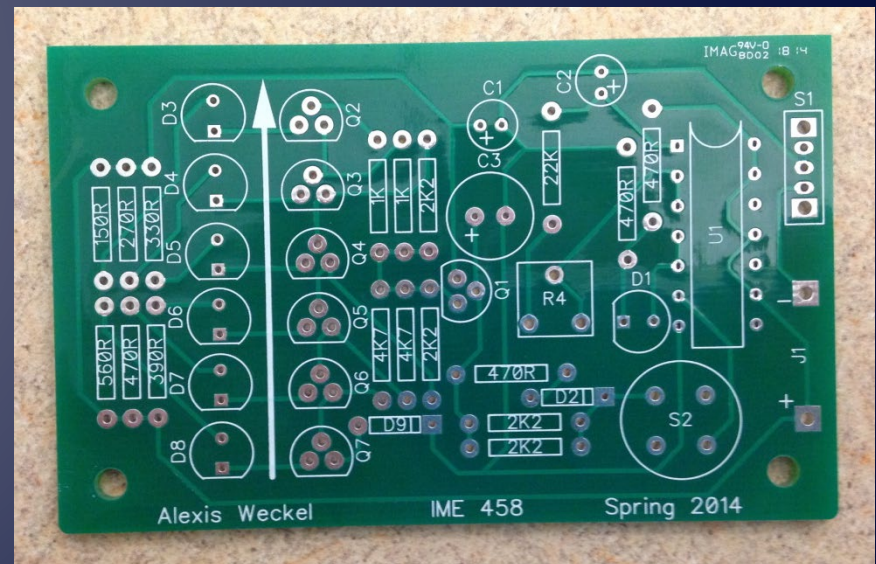


The PCBs

Theirs



Mine



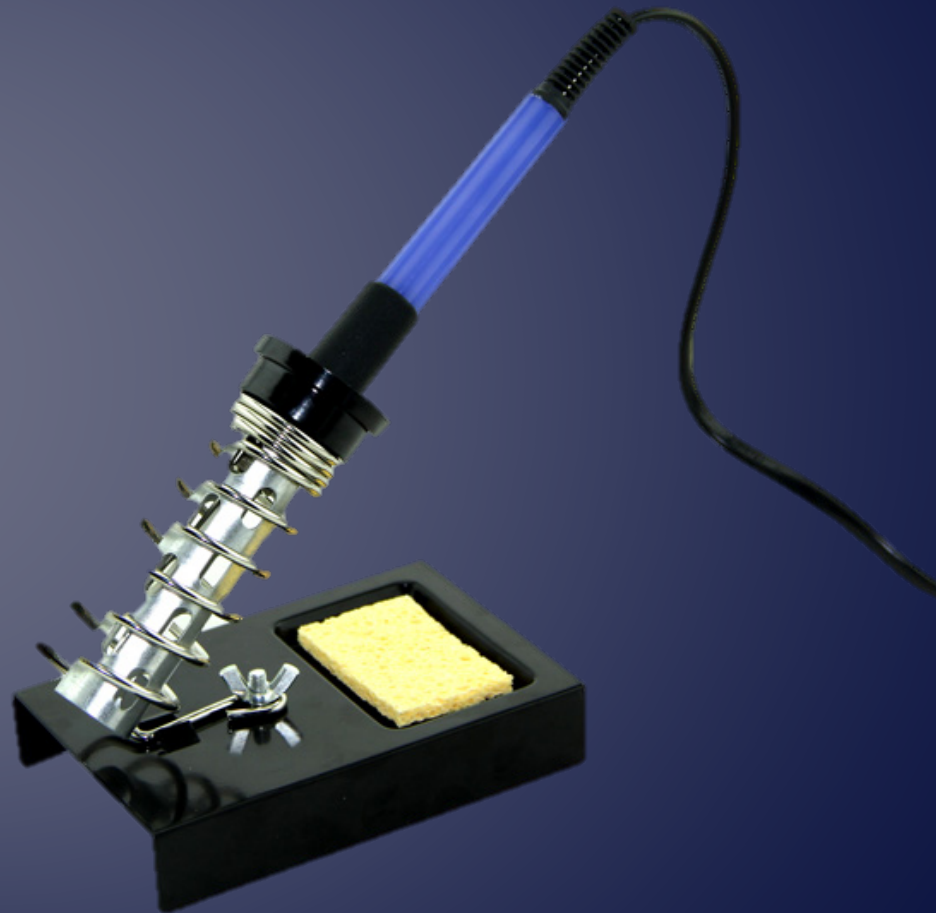


Manufacture and Assembly

Design for Manufacturability

- Minimum copper trace width = 7mil
- Minimum copper trace spacing = 8mil
- Minimum hole size = 15mil
- Minimum annular ring = 10mil

Assembly



Conclusion

