



## CAL POLY DUANE & ANNIE ARMSTRONG COLLECTION

OPENING RECEPTION

SATURDAY NOVEMBER 19, 2011 6PM–9PM

PIERCEMODERN GALLERY

617 12<sup>TH</sup> STREET

PASO ROBLES, CALIFORNIA 93446

**Inventory updated 29Oct21**

## PAT WATERS & THE GRAPHIC COMMUNICATION SUPPORT PROGRAM

Through the philanthropy of world famous artists Duane and Annie Armstrong, and Cal Poly Honored Alumna Pat Waters, a Graphic Communication Support Program has been developed to make a unique art collection available to art collectors, corporations, and to the University.

Coordinated by Pat Waters, 59 oil paintings ranging in size from a few square feet to approximately 8 ft. x 8 ft. have been donated to Cal Poly's Graphic Communication Department. The entire collection has an appraised value of \$1.7 million. Acquisitions represent an investment, as the values are likely to appreciate over time.

## DUANE AND ANNIE ARMSTRONG

Mr. Armstrong, a native Californian, was born in Fresno on Christmas Day in 1938. He has created over 7,000 fine art paintings since he won his first art award at the age of twelve. As one of one of America's most published painters, Duane Armstrong is no newcomer to the world of contemporary fine art. During the 1970s, the popularity of Armstrong's paintings catapulted him into the top five print sales in the nation. His paintings span over four decades of endless exploration in a search for new levels in painting for things yet to be discovered. Some of the featured paintings are by Armstrong's wife Annie Armstrong who specializes in eye-catching shells and striking floral images.

The vast tranquility conveyed in Duane Armstrong's paintings prompted one writer to say:

“Armstrong's very technique is an extension of the mood he creates. Smooth pastel tones that shimmer and blend, broad areas of intense light, skies that stretch cloudless and open, all impart a sense of timelessness and harmony. Perhaps there never existed such a perfect place of refuge, or perhaps it exists everywhere. Perhaps Armstrong's world is only in the mind of its creator, but his vision is a remarkable one. More remarkable because we all know well the places he depicts, although we cannot recall exactly when we were last there.”

Although often thought of as a painter of enchanted fields, Armstrong is also well known for his Abstract Studies, Lord Of The Rings, Sand Dunes, Ladybug In Peril, Pueblo Series, Ladybug In Grass, Lightfall Series, Hot Air Balloons, and the Sunrise At The Beach series.

Duane Armstrong has been honored with two retrospective fine art shows. The first was at Les Cuisins Gallery in Concord in 1980 and the second at Stanford University in 2003. His paintings are in collections of people from all walks of life as well as some of the largest corporations and banks in America. Over the years, Armstrong's artwork has been displayed at numerous galleries throughout the United States.

## GALLERIES

A.D.I. Gallery, San Francisco, California (1970-1975)  
Art About Gallery, Capitola, California (1981)  
Art Design and Investment Company, San Francisco, California (1970-1975)  
Artworks International, Santa Clara, California (1983-1987)  
The Beverly Hills Art Show (1980)  
Bridgeway Gallery, Sausalito, California (1985-1989)  
C.R. Ebert Gallery, San Jose, California (1987)  
The Carter Gallery, Los Angeles, California (1967-1974)  
Chabot Galleries, Cupertino & San Jose, California (1973-1977)  
The Copenhagen Gallery, Solvang, California (1969-1973)  
Discovery Gallery, Mill Valley, California (1982)  
Distelheim Gallery, Chicago, Illinois (1968)  
E.W. Norwitt Company, San Francisco, California (1974)  
The Encounter, Boulder Creek, California (1975-1984)  
Erica's Gallery, Carmel, Saratoga & Ventura, California (1972-1990)  
Erickson's Gallery, Palo Alto, California (1967-1977)  
Fine Arts Association, Playa Del Rey, California (1976-1977)  
The Friendship Gallery, Los Gatos, California (1987)  
Gallery 21, Salt Lake City, Utah (1968-1970)  
Gallery DeTours, Carmel & San Francisco, California (1967-1974)  
Gilbert Gallery, San Francisco & Palm Springs, California (1966-1974)  
Haakman Gallery, Palm Springs & Ventura, California (1987-present)  
Les Cousins Gallery, Concord, California (1980)  
The Lincoln Gallery, Carmel, California (1969)  
Los Robles Gallery, Palo Alto, California (1967)  
M.G.M. Grand Hotel Gallery, Reno, Nevada (1986)  
Margaret Keene Gallery, Honolulu, Hawaii (1973)  
Masters International Gallery, Campbell, California (1967-1974)  
The Mulberry Gallery, Capitola, California (1985)  
Norwood Gallery, Denver, Colorado (1967-1973)  
The Palette Gallery, San Jose, California (1975-1978)  
The Phoenix Gallery, Willow Glen, California (1984)  
Parkhurst Galleries, Queen Mary Lines, Long Beach & Laguna Beach, California (1975)  
Parks Art Gallery, San Jose, California (1963)  
Paul Masson Mountain Winery, Saratoga, California (1986)  
PierceModern Gallery, Paso Robles, California (2011)  
Rene Andrew Galleries, Sacramento, California (1988)  
Studio Gallery, Beverly Hills, California (1999)  
Swanson Galleries, Carmel, San Francisco, Sausalito & Washington, D.C. (1976-1981)  
The Tate Gallery, San Francisco, California (1981)  
The Thompson Gallery, Los Gatos, California (1967)  
Triton Museum, San Jose, California (1968)  
The Waldon Gallery, Los Gatos, California (1968-1970)  
West View Gallery, Willow Glen, California (1985)  
The Young Gallery, San Jose California (1977)

## PERMANENT COLLECTIONS:

Art Market International  
Behring Museum, Blackhawk, California  
Bethany University, Santa Cruz, California  
California Art Review  
Campbell Civic Center, Campbell, California  
Continental Art Products  
Custom Pad Corporation, Santa Clara, California  
Hambley Studios, Santa Clara, California  
Heritage Publications, Chicago  
Hewlett Packard, Computer Systems Division Poster, 1985  
Hoover Institution at Stanford University, Palo Alto, California  
KOME Radio Station, San Jose, California  
Lake Shasta Golf and Country Club, Lake Shasta, California  
National Art Review  
New World Center, Hong Kong  
Office of the Attorney General, Sacramento, California  
O. Henry Recording Studio, Burbank, California  
Q.P.L., N.T., Hong Kong  
Republic of South Korea  
Sierra Club Poster, "High Sierra" 1985  
Southwest Offset, Inc., Dallas, Texas  
Stanford School of Business, Palo Alto, California  
The Campbell Historical Society Museum, Campbell, California  
Turner Art Company  
University of California Berkley Foundation, Berkley, California  
Valley Transportation, Inc., Bakersfield & Fresno, California  
Windsor Art Company, Chicago  
World Tech, N.T., Hong Kong

CORPORATE COLLECTORS

- Aaron Brothers Art Marts

Aervoe Chemical Company

Amdahl Corporation

American Housing Guild

Ampex Corporation

Apple Computer, Inc.

Bank of America

Bank of Tokyo

Barter Systems International

Beaver Lumber Company

Behavioral Research Laboratories

Blue Chip Stamp Corporation

Broadway Company

Brueners of California

Business Exchange

Business Factors, Inc.

California Graphics

Campbell Lumber Company

Century 21 Cerrito

Motorcoach LTD

Cisco Systems, Inc.

Coakley-Heagerty, Inc. Coca-Cola Bottling Company

Columbia Pictures

Consilium Corporation

Consolidated Furniture

Construction Labor News

Creative Arts

Dean Witter Reynolds, Inc.

Deck the Walls

Ditz-Crane Development Company

Double Bow Corporation

Emporium Capwell and Company

Exchange Enterprises

Fairchild Semiconductor Corporation

Firestone Tire Company

Golden Pacific Company

Great Western Savings and Loan

Hambley Studios

Hatcher Trade Press

Hewlett Packard Corporation

Home Federal Savings and Loan
- House of Printing

Hublein Corporation

The Hudson Company

Hyatt Hotels

I.B.M. Corporation

I. Magnin & Company

Interlan Development Company

Internal Revenue Service

Kaiser Permanente Center

KQED Public Television Station

Lockheed, Missile and Space Division

Macy's and Company

May Company

McDonald's Corporation

McWhorter's, Inc.

Melmed Reading Clinic

Mercury Savings and Loan

Monterey Municipal Airport

Montgomery Ward

Mineta San Jose International Airport

Offshore Films Productions Company

Pacific Funding Company

Porter-Jensen and Partners

Schulte/Blackwell Development Company

Sears Roebuck and Company

Sedtronics

Signetics Corporation

Southwest Offset, Inc.

Standard Oil of California

Stratacom Swire Technology

TATM Group

Tarlow's Furs Team Corporation

Trade Systems Corporation

Transamerica Corporation

Veterans Administrational Hospital

Wells Fargo Bank

World Wide Art, Inc.

Xerox Corporation



CHICKEN SLED WITH GREEN STINGER

ARTIST: Duane Armstrong  
SIZE: 60" x 74"  
FRAMED SIZE: 63" x 77"  
MEDIUM: Oil  
SUBSTRATE: Canvas  
ARMSTRONG IMAGE NUMBER: 01  
SIGNATURE LOCATION: Bottom Right  
FRAMED

On Display

Not Available

Location:  
Tech Park Building 83



### SEA SHELL

ARTIST: Annie Armstrong

SIZE: 68" x 74"

MEDIUM: Oil

SUBSTRATE: Canvas

ARMSTRONG IMAGE NUMBER: 02

SIGNATURE LOCATION: Bottom Right

NOT MEANT TO BE FRAMED

**Available**  
Stored in Vault



### RED RING

ARTIST: Duane Armstrong

SIZE: 80" x 68"

MEDIUM: Oil

SUBSTRATE: Canvas

ARMSTRONG IMAGE NUMBER: 03

SIGNATURE LOCATION: Bottom Right

NOT MEANT TO BE FRAMED

**On Display**

Not Available

**Location:**  
**Tech Park Building 83**



### G.I. WITH BROKEN PURPLE HEART

ARTIST: Duane Armstrong

SIZE: 74" x 60"

MEDIUM: Oil

SUBSTRATE: Canvas

ARMSTRONG IMAGE NUMBER: 04

SIGNATURE LOCATION: Bottom Right

NOT MEANT TO BE FRAMED

**Available**  
Stored in Vault



### CAROLINA BAY SCALLOP

ARTIST: Annie Armstrong

SIZE: 60" x 60"

FRAMED SIZE: 64" x 64"

MEDIUM: Oil

SUBSTRATE: Canvas

ARMSTRONG IMAGE NUMBER: 05

SIGNATURE LOCATION: Bottom Right

FRAMED

**Available**  
Stored in Vault



### RED RING (WITH BLACK HOLE AND SCHEMATIC)

ARTIST: Duane Armstrong

SIZE: 60" x 70"

MEDIUM: Oil

SUBSTRATE: Canvas

ARMSTRONG IMAGE NUMBER: 06

SIGNATURE LOCATION: Bottom Right

NOT MEANT TO BE FRAMED

**Available**

Stored in Vault



### SITTING COW WITH HOT WIRES AND POOL

ARTIST: Duane Armstrong

SIZE: 74" x 60"

MEDIUM: Oil

SUBSTRATE: Canvas

ARMSTRONG IMAGE NUMBER: 07

SIGNATURE LOCATION: Bottom Right

NOT MEANT TO BE FRAMED

**On Display**

Not Available

**Location :**  
**Tech Park (Bldg.83)**



## MURICADE

ARTIST: Annie Armstrong

SIZE: 60" x 60"

FRAMED SIZE: 67" x 67"

MEDIUM: Oil

SUBSTRATE: Canvas

ARMSTRONG IMAGE NUMBER: 08

SIGNATURE LOCATION: Bottom Right

FRAMED

**Available**  
Stored in Vault



## EVIDENCE OF MAN

ARTIST: Duane Armstrong

SIZE: 70" x 60"

MEDIUM: Oil

SUBSTRATE: Canvas

ARMSTRONG IMAGE NUMBER: 09

SIGNATURE LOCATION: Bottom Right

NOT MEANT TO BE FRAMED

**Available**  
Stored in Vault



On Display

Not Available

### CALLA LILIES

ARTIST: Annie Armstrong

SIZE: 42" x 70"

FRAMED SIZE: 45" x 73"

MEDIUM: Oil

SUBSTRATE: Canvas

ARMSTRONG IMAGE NUMBER: 10

SIGNATURE LOCATION: Bottom Right

FRAMED

Promised to Computer  
Science Dept Building 14



On Display

Not Available

### LAST PUMPING ON THE NORTH SHORE

ARTIST: Duane Armstrong

SIZE: 60" x 70"

MEDIUM: Oil

SUBSTRATE: Canvas

ARMSTRONG IMAGE NUMBER: 11

SIGNATURE LOCATION: Bottom Right

NOT MEANT TO BE FRAMED

**Location :**  
**Tech Park (Bldg.83)**



### GREEN THING THAT ATE LOLO'S BOAT

ARTIST: Duane Armstrong

SIZE: 60" x 74"

MEDIUM: Oil

SUBSTRATE: Canvas

ARMSTRONG IMAGE NUMBER: 12

SIGNATURE LOCATION: Bottom Right

NOT MEANT TO BE FRAMED

**Available**  
Stored in Vault



### MOTH

ARTIST: Annie Armstrong

SIZE: 68" x 60"

FRAMED SIZE: 71" x 63"

MEDIUM: Oil

SUBSTRATE: Canvas

ARMSTRONG IMAGE NUMBER: 13

SIGNATURE LOCATION: Bottom Right

FRAMED

**Available**  
Stored in Vault



**CACTUS FLOWERS**

ARTIST: Annie Armstrong  
SIZE: 52" x 60"  
FRAMED SIZE: 55" x 63"  
MEDIUM: Oil  
SUBSTRATE: Canvas  
ARMSTRONG IMAGE NUMBER: 14  
SIGNATURE LOCATION: Bottom Right  
FRAMED

**On Display**  
Not Available

**Location: 26-201**



**POND**

ARTIST: Duane Armstrong  
SIZE: 50" x 60"  
FRAMED SIZE: 55" x 65"  
MEDIUM: Oil  
SUBSTRATE: Canvas  
ARMSTRONG IMAGE NUMBER: 15  
SIGNATURE LOCATION: Bottom Right  
FRAMED

**On Display**  
Not Available

**Location:**  
**26-201B**



**OVER THE JELLYFISH SEA**

ARTIST: Duane Armstrong  
SIZE: 52" x 60"  
FRAMED SIZE: 56" x 64"  
MEDIUM: Oil  
SUBSTRATE: Canvas  
ARMSTRONG IMAGE NUMBER: 16  
SIGNATURE LOCATION: Bottom Right  
FRAMED

**On Display**  
Not Available

Location :  
Tech Park Building 83



**BIRD MAN**

ARTIST: Duane Armstrong  
SIZE: 52" x 60"  
FRAMED SIZE: 56" x 64"  
MEDIUM: Oil  
SUBSTRATE: Canvas  
ARMSTRONG IMAGE NUMBER: 17  
SIGNATURE LOCATION: Bottom Right  
FRAMED

**On Display**  
Not Available

Location:  
26-201A



## INTERLOPER

ARTIST: Duane Armstrong

SIZE: 60" x 80"

MEDIUM: Oil

SUBSTRATE: Canvas

ARMSTRONG IMAGE NUMBER: 18

SIGNATURE LOCATION: Bottom Center

NOT MEANT TO BE FRAMED

**Available**  
Stored in Vault



## GRASS

ARTIST: Duane Armstrong

SIZE: 39" x 39"

FRAMED SIZE: 44" x 44"

MEDIUM: Oil

SUBSTRATE: Canvas

IMAGE NUMBER: X4T9195

SIGNATURE LOCATION: Bottom Right

FRAMED

**On Display**

Not Available

Location:

Tech Park Building 83



**CLIMBERS**

ARTIST: Duane Armstrong  
SIZE: 32" x 32"  
FRAMED SIZE: 38.5" x 38.5"  
MEDIUM: Oil  
SUBSTRATE: Canvas  
IMAGE NUMBER: X4T9196  
SIGNATURE LOCATION: Bottom Right  
FRAMED

**On Display**

Not Available

Location :  
Journalism 26-228



**CALLA LILIES**

ARTIST: Annie Armstrong  
SIZE: 52" x 31"  
FRAMED SIZE: 55" x 36"  
MEDIUM: Oil  
SUBSTRATE: Canvas  
IMAGE NUMBER: X4T9201  
SIGNATURE LOCATION: Bottom Right  
FRAMED

**On Display**

Not Available

**Location:  
26-201D**



**MAGNOLIA**

ARTIST: Annie Armstrong  
SIZE: 50" x 41"  
FRAMED SIZE: 54" x 45"  
MEDIUM: Oil  
SUBSTRATE: Canvas  
IMAGE NUMBER: X4T9206  
SIGNATURE LOCATION: Bottom Right  
FRAMED

**On Display**  
Not Available

Location:  
26-201D



**CROSS — SOLD**

ARTIST: Duane Armstrong  
SIZE: 40" x 30"  
FRAMED SIZE: 48" x 38"  
MEDIUM: Oil  
SUBSTRATE: Canvas  
IMAGE NUMBER: X4T9210  
SIGNATURE LOCATION: Bottom Right  
FRAMED

**Sold**  
Not Available



**SHELL**

ARTIST: Annie Armstrong  
SIZE: 59" x 34"  
FRAMED SIZE: 64" x 39"  
MEDIUM: Oil  
SUBSTRATE: Canvas  
IMAGE NUMBER: X4T9215  
SIGNATURE LOCATION: Bottom Right  
FRAMED

**On Display**  
Not Available

Location:  
Tech Park Building 83



**SHELL — SOLD**

ARTIST: Annie Armstrong  
SIZE: 60" x 30"  
FRAMED SIZE: 66" x 36"  
MEDIUM: Oil  
SUBSTRATE: Canvas  
IMAGE NUMBER: X4T9217  
SIGNATURE LOCATION: Bottom Right  
FRAMED

**Sold**  
Not Available



**NAUTILUS**

ARTIST: Annie Armstrong  
SIZE: 60" x 40"  
FRAMED SIZE: 64" x 44"  
MEDIUM: Oil  
SUBSTRATE: Canvas  
IMAGE NUMBER: X4T9222  
SIGNATURE LOCATION: Bottom Right  
FRAMED

**On Display**  
Not Available

Location:  
26-200D



**FIELD OF GRASS WITH LADY BUG**

ARTIST: Duane Armstrong  
SIZE: 48" x 48"  
FRAMED SIZE: 52" x 52"  
MEDIUM: Oil  
SUBSTRATE: Canvas  
IMAGE NUMBER: X4T9227  
SIGNATURE LOCATION: Bottom Right  
FRAMED

**On Display**  
Not Available

Location:  
26-213



**CROSS**

ARTIST: Duane Armstrong  
SIZE: 41" x 42"  
FRAMED SIZE: 48" x 48"  
MEDIUM: Oil  
SUBSTRATE: Canvas  
IMAGE NUMBER: X4T9230  
SIGNATURE LOCATION: Bottom Right  
FRAMED

**On Display**  
Not Available

Location:  
26-213



**POND**

ARTIST: Duane Armstrong  
SIZE: 58" x 41"  
FRAMED SIZE: 62" x 45"  
MEDIUM: Oil  
SUBSTRATE: Canvas  
IMAGE NUMBER: X4T9232  
SIGNATURE LOCATION: Bottom Right  
FRAMED

**On Display**  
Not Available

Location:  
26-201B



WATER LILIES

ARTIST: Annie Armstrong  
SIZE: 80" x 68"  
MEDIUM: Oil  
SUBSTRATE: Canvas  
IMAGE NUMBER: X4T9238  
SIGNATURE LOCATION: Bottom Right  
NOT MEANT TO BE FRAMED

Available  
Stored in Vault



PORTRAIT OF A LADYBUG

ARTIST: Duane Armstrong  
SIZE: 35" x 35"  
FRAMED SIZE: 39" x 39"  
MEDIUM: Oil  
SUBSTRATE: Canvas  
IMAGE NUMBER: X4T9241  
SIGNATURE LOCATION: Bottom Right  
FRAMED

On Display  
Not Available

Location:  
26-213



**YELLOW RING**

ARTIST: Duane Armstrong  
SIZE: 60" x 70"  
MEDIUM: Oil  
SUBSTRATE: Canvas  
IMAGE NUMBER: X4T9246  
SIGNATURE LOCATION: Bottom Right  
NOT MEANT TO BE FRAMED

**Available**  
Stored in Vault



**BATHOSPHERE**

ARTIST: Duane Armstrong  
SIZE: 58" x 52"  
FRAMED SIZE: 67" x 61"  
MEDIUM: Oil  
SUBSTRATE: Canvas  
IMAGE NUMBER: X4T9843  
SIGNATURE LOCATION: Bottom Right  
FRAMED

**On Display**  
Not Available

Location :  
26-214



### THE SIGNIFICANCE OF A WHITE SPOT

ARTIST: Duane Armstrong

SIZE: 70" x 60"

MEDIUM: Oil

SUBSTRATE: Canvas

IMAGE NUMBER: X4T9845

SIGNATURE LOCATION: Bottom Right

NOT MEANT TO BE FRAMED

On Display

Not Available

Location:

Tech Park Building 83



### PORTRAIT OF A LADYBUG

ARTIST: Duane Armstrong

SIZE: 48" x 48"

FRAMED SIZE: 50" x 50"

MEDIUM: Oil

SUBSTRATE: Canvas

IMAGE NUMBER: X4T9849

SIGNATURE LOCATION: Bottom Right

FRAMED

On Display

Not Available

Location:

26-213



### NIGHT FIELD

ARTIST: Duane Armstrong

SIZE: 54" x 48"

MEDIUM: Oil

SUBSTRATE: Canvas

IMAGE NUMBER: X4T9851

SIGNATURE LOCATION: Bottom Right

NOT MEANT TO BE FRAMED

On Display

Not Available

Location :  
26-200D



### BUTTERFLY CONE

ARTIST: Annie Armstrong

SIZE: 44" x 32"

FRAMED SIZE: 48" x 36"

MEDIUM: Oil

SUBSTRATE: Canvas

IMAGE NUMBER: X4T9855

SIGNATURE LOCATION: Bottom Right

FRAMED

On Display

Not Available

**Promised to Computer  
Science Dept Building 14**

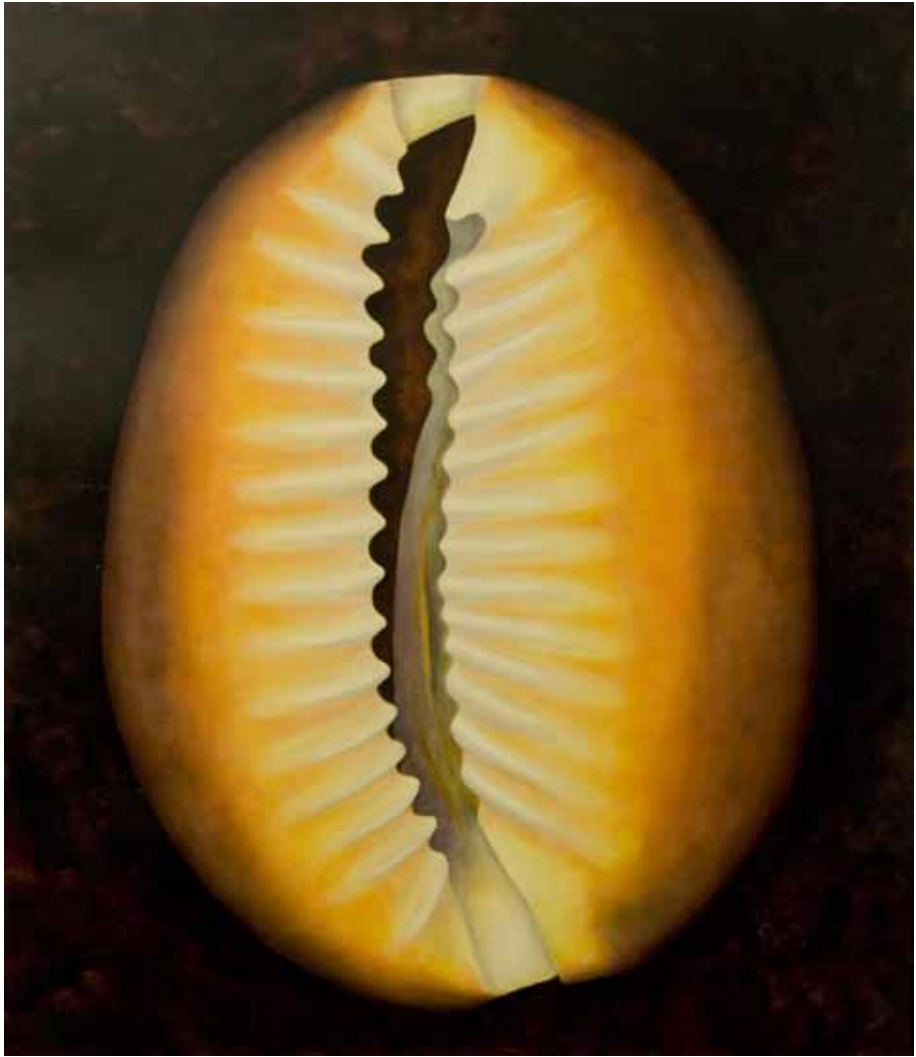


**CAUGHT IN TIME**

ARTIST: Duane Armstrong  
SIZE: 59" x 41"  
FRAMED SIZE: 63" x 45"  
MEDIUM: Oil  
SUBSTRATE: Canvas  
IMAGE NUMBER: X4T9858  
SIGNATURE LOCATION: Bottom Right  
FRAMED

**On Display**  
Not Available

Location :  
26-200D



**SHELL**

ARTIST: Annie Armstrong  
SIZE: 60" x 52"  
FRAMED SIZE: 64" x 56"  
MEDIUM: Oil  
SUBSTRATE: Canvas  
IMAGE NUMBER: X4T9860  
SIGNATURE LOCATION: Bottom Right  
FRAMED

**Available**  
Stored in Vault



**STAR CLUSTER**

ARTIST: Duane Armstrong  
SIZE: 52" x 60"  
FRAMED SIZE: 54" x 62"  
MEDIUM: Oil  
SUBSTRATE: Canvas  
IMAGE NUMBER: X4T9865  
SIGNATURE LOCATION: Bottom Right  
FRAMED

**On Display**

Not Available

Location :  
Tech Park Building 83  
Room 101-101A



**UNTITLED**

ARTIST: Duane Armstrong  
SIZE: 57" x 57"  
MEDIUM: Oil  
SUBSTRATE: Canvas  
IMAGE NUMBER: X4T9868  
SIGNATURE LOCATION: Bottom Right  
NOT MEANT TO BE FRAMED

**On Display**

Not Available

Location : PolySci  
(Bldg.47-14)



## SHELL

ARTIST: Annie Armstrong

SIZE: 70" x 42"

FRAMED SIZE: 74" x 46"

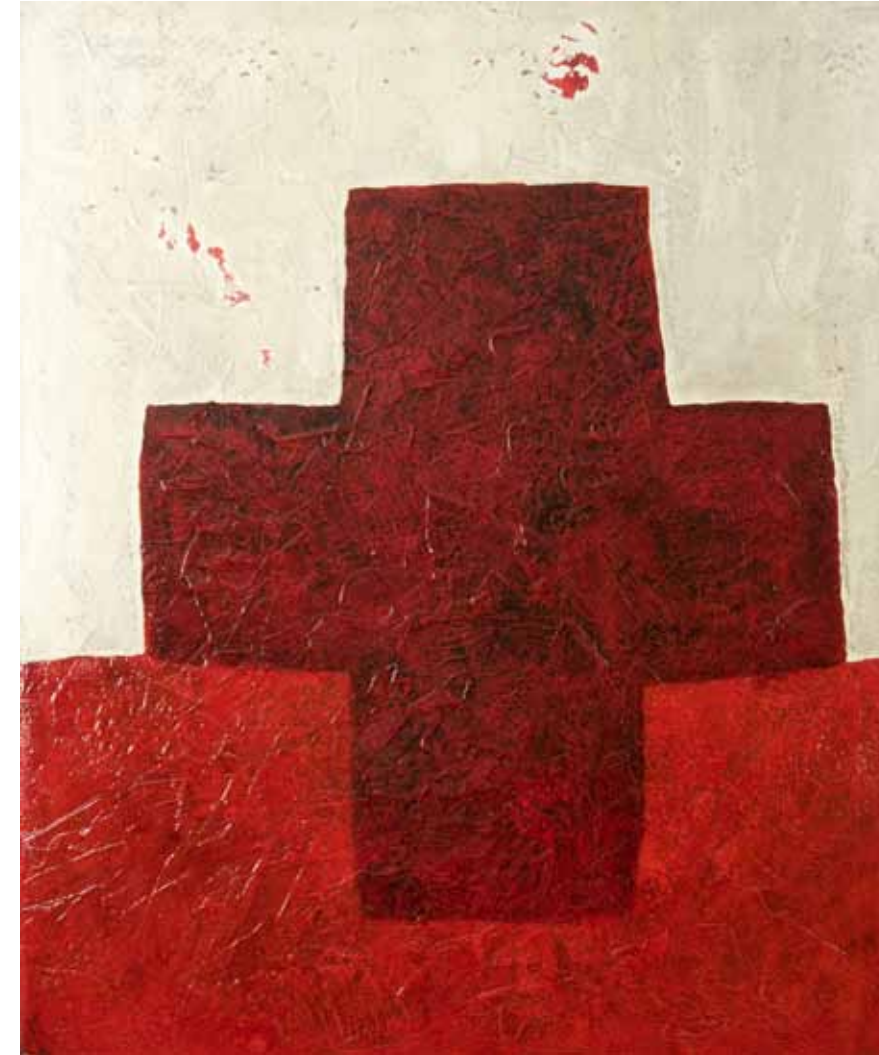
MEDIUM: Oil

SUBSTRATE: Canvas

IMAGE NUMBER: X4T9872

SIGNATURE LOCATION: Bottom Right

FRAMED



## RED CROSS

ARTIST: Duane Armstrong

SIZE: 68" x 56"

MEDIUM: Oil

SUBSTRATE: Canvas

IMAGE NUMBER: X4T9876

SIGNATURE LOCATION: Bottom Right

NOT MEANT TO BE FRAMED

**Available**  
Stored in Vault



### OVERVIEW OF DOME

ARTIST: Duane Armstrong

SIZE: 70" x 60"

MEDIUM: Oil

SUBSTRATE: Canvas

IMAGE NUMBER: X4T9880

SIGNATURE LOCATION: Bottom Right

NOT MEANT TO BE FRAMED

**On Display**

Not Available

Location :  
Tech Park (Bldg.83)



### BLACK HOLE

ARTIST: Duane Armstrong

SIZE: 60" x 70"

MEDIUM: Oil

SUBSTRATE: Canvas

IMAGE NUMBER: X4T9886

SIGNATURE LOCATION: Bottom Right

NOT MEANT TO BE FRAMED

**Sold**

Not Available



**NEBULA**  
ARTIST: Duane Armstrong  
SIZE: 60" x 74"  
MEDIUM: Oil  
SUBSTRATE: Canvas  
IMAGE NUMBER: X4T9892  
SIGNATURE LOCATION: Bottom Right  
NOT MEANT TO BE FRAMED

**Available**  
Stored in Vault



**CHINA ROCK**  
ARTIST: Duane Armstrong  
SIZE: 60" x 74"  
MEDIUM: Oil  
SUBSTRATE: Canvas  
IMAGE NUMBER: X4T9894  
SIGNATURE LOCATION: Bottom Right  
NOT MEANT TO BE FRAMED

**Available**  
Stored in Vault



**SHELL**

ARTIST: Annie Armstrong  
SIZE: 70" x 60"  
FRAMED SIZE: 73" x 63"  
MEDIUM: Oil  
SUBSTRATE: Canvas  
IMAGE NUMBER: X4T9897  
SIGNATURE LOCATION: Bottom Right  
FRAMED

**Available**  
Stored in Vault



**On Display**  
Not Available

Location :  
26-213

**SPINDLE TIBIA**

ARTIST: Annie Armstrong  
SIZE: 27" x 97"  
FRAMED SIZE: 32" x 102"  
MEDIUM: Oil  
SUBSTRATE: Canvas  
IMAGE NUMBER: X4T9900  
SIGNATURE LOCATION: Bottom Right  
FRAMED



### JUNGLE STONE

ARTIST: Duane Armstrong

SIZE: 16" x 16"

FRAMED SIZE: 34" x 34"

MEDIUM: Mixed

SUBSTRATE: Mat Board

IMAGE SUBSTRATE: X4T9913

SIGNATURE LOCATION: Bottom Right

FRAMED

On Display

Not Available

Location:

Tech Park Building 83



### DIAMOND GAME

ARTIST: Duane Armstrong

SIZE: 16" x 16"

FRAMED SIZE: 31" x 31"

MEDIUM: Mixed

SUBSTRATE: Mat Board

IMAGE NUMBER: X4T9917

SIGNATURE LOCATION: Bottom Right

FRAMED

On Display

Not Available

Location : PolySci

Bldg.47-14



**GREEN GATE**

ARTIST: Duane Armstrong  
SIZE: 16" x 16"  
FRAMED SIZE: 32" x 32"  
MEDIUM: Mixed  
SUBSTRATE: Mat Board  
IMAGE NUMBER: X4T9919  
SIGNATURE LOCATION: Bottom Right  
FRAMED

**On Display**  
Not Available

Location:  
Tech Prk Building 83

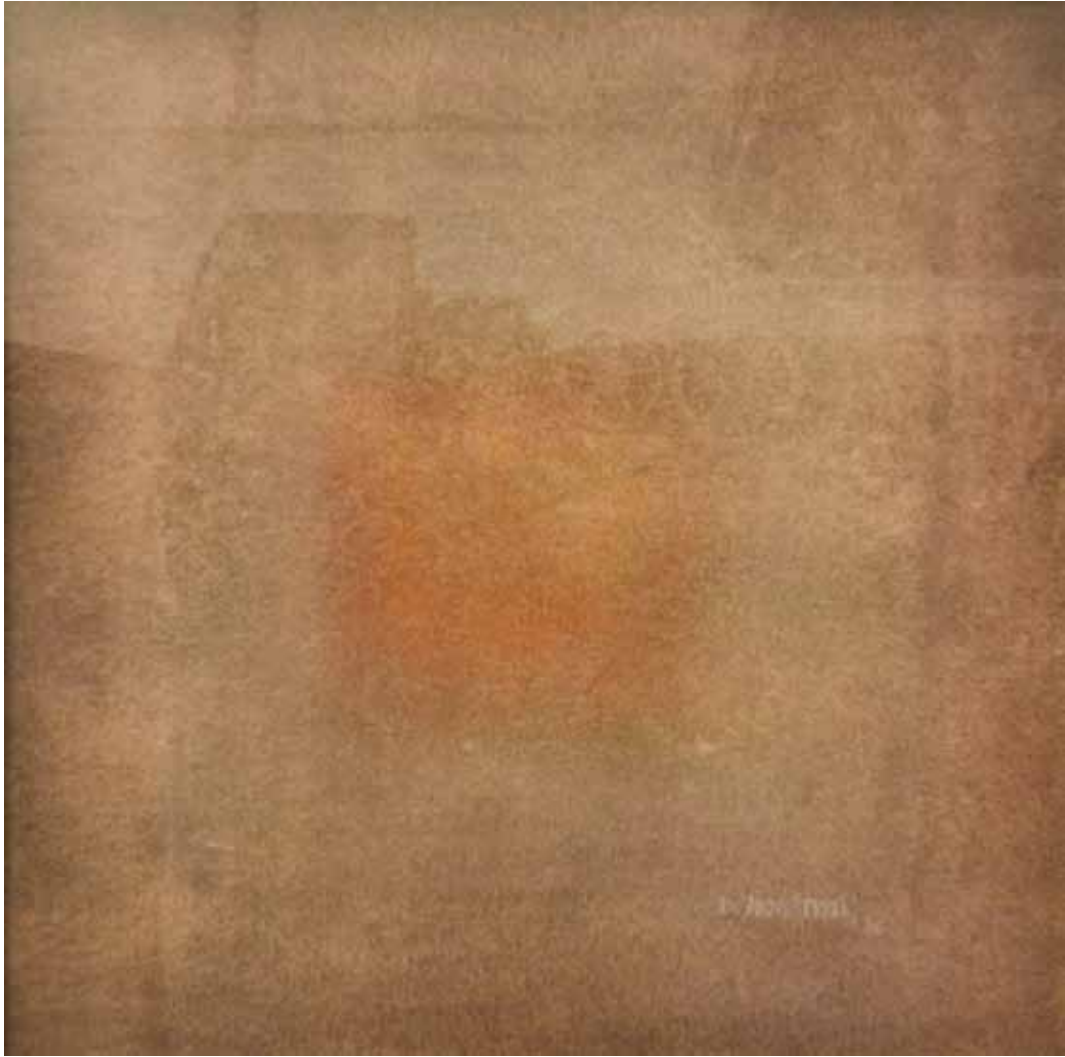


**PORTAL**

ARTIST: Duane Armstrong  
SIZE: 27" x 21"  
FRAMED SIZE: 36" x 28"  
MEDIUM: Mixed  
SUBSTRATE: Mat Board  
IMAGE NUMBER: X4T9927  
SIGNATURE LOCATION: Bottom Right  
FRAMED

**On Display**  
Not Available

Location:  
Tech Prk Building 83



**ZANZIBAR GLYPH PLATE**

ARTIST: Duane Armstrong  
SIZE: 16" x 16"  
FRAMED SIZE: 36" x 36"  
MEDIUM: Mixed  
SUBSTRATE: Mat Board  
IMAGE NUMBER: X4T9925  
SIGNATURE LOCATION: Bottom Right  
FRAMED

**On Display**

Not Available

Location :  
PolySci (Bldg.47)



**LA CRUCES STONE**

ARTIST: Duane Armstrong  
SIZE: 16" x 16"  
FRAMED SIZE: 35" x 35"  
MEDIUM: Mixed  
SUBSTRATE: Mat Board  
IMAGE NUMBER: X4T9926  
SIGNATURE LOCATION: Bottom Right  
FRAMED

**On Display**

Not Available

Location :  
Tech Park (Bldg.83)



### 1. FOURTH LEVEL 2. SPACE BUG 3. SPACE COACH

ARTIST: Duane Armstrong

SIZE: 16" x 16"

FRAMED SIZE: 35" x 35"

MEDIUM: Mixed

SUBSTRATE: Mat Board

IMAGE NUMBER: X4T9927

SIGNATURE LOCATION: Bottom Right

FRAMED

On Display

Not Available

**Location :**  
**Tech Park (Bldg.83)**



### THE ETERNAL CROSS

ARTIST: Duane Armstrong

SIZE: 60" x 52"

FRAMED SIZE: 67" x 61"

MEDIUM: Oil

SUBSTRATE: Canvas

SIGNATURE LOCATION: Bottom Right

FRAMED

On Display

Not Available

**Location :**  
**26-2123**



### MEMPHIS GLYPH PLATE

ARTIST: Duane Armstrong

SIZE: 15" x 15"

FRAMED SIZE: 33" x 33"

MEDIUM: Oil

SUBSTRATE: Mat Board

SIGNATURE LOCATION: Bottom Right

FRAMED

**On Display**

Not Available

Location :  
Tech Park (Bldg.83)



### BIRD MAN

ARTIST: Duane Armstrong

SIZE: 60" x 68"

MEDIUM: Oil

SUBSTRATE: Canvas

SIGNATURE LOCATION: Bottom Right

NOT MEANT TO BE FRAMED

**Available**

Stored in Vault

**FOR INFORMATION ON ACQUISITIONS CONTACT:  
GRAPHIC COMMUNICATION INSTITUTE AT CAL POLY**

Graphic Communication Department  
Cal Poly State University  
San Luis Obispo, CA 93407  
[www.grci.calpoly.edu](http://www.grci.calpoly.edu)

**CONTACTS:**

Dr. Harvey R. Levenson  
Department Head  
Graphic Communication Department  
805-756-6151  
[hlevenso@calpoly.edu](mailto:hlevenso@calpoly.edu)

Lyndee Sing  
Manager  
805-756-2645  
[lsing@calpoly.edu](mailto:lsing@calpoly.edu)

**PIERCE MODERN GALLERY**

617 12th St  
Paso Robles, CA 93446  
[www.piercemodern.com](http://www.piercemodern.com)

**CONTACT:**

Ms. Rachel Eckert  
Gallery Director  
(805) 975-4860  
[piercemodern@gmail.com](mailto:piercemodern@gmail.com)

Catalog designed by Lauren Peterson,  
Graphic Communication Department, Cal Poly

Printed by University Graphic Systems  
Produced on a Konica Minolta Bizhub C8000 Color Digital Press