



CAL POLY

Student Affairs

New Student & Transition Programs

WOW Advising Session

Brought to you by the CLA Advising Center



CLAAdvisingCenter

Get updates, reminders of important deadlines,
registration & academic success tips

CLA Advising Center

Your CLA Academic Advisors.....



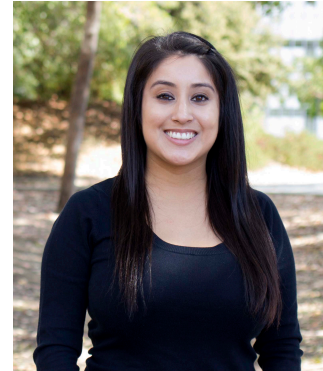
Sabrina Canady



Katie Harris



Alejandra Cebreros



Pauline Dominguez



Penny Bennett,
Associate Dean
for Student
Success

Graduate
Intern:
Sean
Johnson



Peer
Advisors:



Building 47, Room 22B
M-F 9-12 & 1-4

(805) 756-6200
claadvising@calpoly.edu



CLAAdvisingCenter

Who To See For What

Academic Advisors

- Adjusting to Cal Poly
- Academic Support
Identifying & Reaching your Goals – in and out of the classroom
- Finding Resources
- Academic Planning
- Registration Help
- Change of Major
- Considering Withdrawal or Leave
- University Policy & Procedures

Faculty Advisors

- Course Content Questions
- Career Planning
- Graduate Schools
- Internships

Peer Advisors

- General Questions
- Connect you with the right advisor or office
- Appointment Scheduling

Career Services

Career Services can help you:

- Explore your values, interests, personality, and strengths and how they translate into a meaningful career
- Discover career possibilities related to your major
- Confirm your career direction and help you set plans into motion
- Search for internship and jobs (part-time and after college)
- Plan for grad school
- With any and all career-related needs



**College Specialist
Career Counselor
for CLA**

Laura Hunkler

Career Services Events

- Workshops and Events (CLA Specific Programming)
- Quarterly Career Fairs
- Opportunities to connect with employers



Career Services

Location & Appointments

LOCATION

Building 124, near Stadium

DROP IN (15 min)

- 1-4 p.m. on Mon-Thur (Bldg 124)

SCHEDULED APPOINTMENTS (30 or 50 min)

Daily 9 a.m.-4 p.m.

- 4-6 p.m. on Wednesdays (Bldg 52)
- Online scheduling
- (805) 756-2501

WEBSITE

careerservices.calpoly.edu





CAREER PROGRAMMING FOR TRANSFER STUDENTS

Jump Start Your Internship & Job Search
September 25 - October 23, 2018

PREPARING FOR THE CAREER FAIR WORKSHOPS

- » TUESDAY, SEPTEMBER 25 - 11:10 a.m. to Noon | Career Services (Bldg. 124, Room 117)
- » MONDAY, OCTOBER 1 - 4:10 to 5:00 p.m. | Career Services (Bldg. 124, Room 117)

Are you intimidated by the thought of going to a career fair? Don't know how to prepare? Come learn how to research employers, tailor your resume, craft your pitch, dress for success and, more!

HANDS-ON CAREER FAIR PREP LAB

- » TUESDAY, SEPTEMBER 25 - 5:10 to 6:00 p.m. | Poly Canyon Village (Aliso)

Please bring your computer to this highly interactive event where you'll create and practice your pitch and learn tons of tips to help you prepare for a career fair. Feel free to bring a friend! Food provided!

RESUME & CAREER FAIR PREP CLINICS

- » TUESDAY, SEPTEMBER 25 - 2:00 to 4:00 p.m. | University Union 220 (Bldg. 65)
- » FRIDAY, SEPTEMBER 28 - 9:00 a.m. to Noon | Bonderson 104 (Bldg. 197)

Career counselors will be available to review your resume and/or answer your career fair questions. Students served on a first-come, first-serve basis. If you would like your resume reviewed, we kindly request that you bring a PRINTOUT of your resume.

INTERVIEW WITH CONFIDENCE

- » TUESDAY, OCTOBER 2 - 11:10 a.m. to Noon | Career Services (Bldg. 124, Room 117)
- » THURSDAY, OCTOBER 18 - 3:10 to 4:00 p.m. | Career Services (Bldg. 124, Room 224)

Does the thought of an interview make you nervous? We're here to help! Come learn how to identify your relevant skills and experience, anticipate interview questions, research employers, dress for success, and more!

CONFESSIONS OF A RECRUITER AND CAREER COUNSELOR

- » TUESDAY, OCTOBER 2 - 1:10 to 2:00 p.m. | Career Services (Bldg. 124, Room 117)

Come get the real scoop (and real stories) about job and internship searches including prepping for career fairs, interviews, resume advice, and much more. Students will drive the conversation—come ready to ask questions!

NAVIGATING YOUR INTERNSHIP OR JOB SEARCH

- » TUESDAY, OCTOBER 23 - 3:10 to 4:00 p.m. | Career Services (Bldg. 124, Room 224)

Looking for a job or internship? We'll cover the foundation of what goes into a successful search including how to find and get opportunities.

EVENTS

COMPUTING CAREER FAIR



JOBS & INTERNSHIPS
10/2/18 | 5:00 – 8:00 PM
Madonna Inn Expo
Free transportation provided!

FALL CAREER FAIR



JOBS & INTERNSHIPS
10/3 & 10/4, 2018 | REC Center
Networking: 9:30 AM – 2:30 PM
Interviews by Invitation: 2:30 – 5:30 PM



**Earn your Career & Professional
Development Certificate!**
For details, visit: careerservices.calpoly.edu



CAREER SERVICES

UNLIMITED POSSIBILITIES

careerservices.calpoly.edu

Cal Poly Catalog 2017-2019

- Course Descriptions and prerequisites
- University Policies
- Major Curriculum Requirements
- Graduation Requirements
- Degree Flowcharts
- Minors
- Student Rights & Responsibilities



www.catalog.calpoly.edu

Degree Progress Report

Track your degree requirements and confirm you are taking the right courses

GE REQS (CLA) (2011)

GENERAL EDUCATION REQUIREMENTS 2011-Current Catalog - 72 Units Required. Refer to Major/Support section for courses that satisfy/double count for GE. (RG-0015)

GE AREA A (CLA)

GE AREA A: COMMUNICATION - 12 Units Required (R-0016)

- Units: 12.00 required, 12.00 taken, 0.00 needed

A1

A1: EXPOSITORY WRITING COURSE - 4 Units Required (R16-10)

- Units: 4.00 required, 4.00 taken, 0.00 needed

The following courses were used to satisfy this requirement:

Course	Description	Units	When	Grade
ENGL 134	Writing and Rhetoric	4.00	Spring Quarter 2013	A-

[View All](#)

A2

A2: ORAL COMMUNICATION COURSE - 4 Units Required (R16-20)

- Units: 4.00 required, 4.00 taken, 0.00 needed

The following courses were used to satisfy this requirement:

Course	Description	Units	When	Grade
COMS 101	Public Speaking	4.00	Fall Quarter 2012	A-

[View All](#)

A3

A3: REASONING/ARGUMENTATION/WRITING COURSE - 4 Units Required (R16-30)

- Units: 4.00 required, 4.00 taken, 0.00 needed

COMMUNICATION STUDIES PRIMARY MAJOR B.A. 2011-2013 Catalog - 92 Minimum Units Required, Including Support Courses (RG-0028)

- Units: 92.00 required, 44.00 taken, 48.00 needed

COMS MAJ CRS (2007)

COMMUNICATION STUDIES MAJOR SPECIFIED COURSES - 52 Units Required (R-0169)

- Units: 52.00 required, 24.00 taken, 28.00 needed

COMS 201 or 208 or 226

COMS 201 or 208 or 226 - 4 Units Required (R169-10)

- Units: 4.00 required, 4.00 taken, 0.00 needed

The following courses were used to satisfy this requirement:

Course	Description	Units	When	Grade	Status
COMS 226	Applied Argumentation	4.00	Fall Quarter 2013		

[View All](#) First 1 of 1 Last

COMS 212

COMS 212 - 4 Units Required (R169-20)

- Units: 4.00 required, 4.00 taken, 0.00 needed

The following courses were used to satisfy this requirement:

Course	Description	Units	When	Grade	Status
COMS 212	Interpersonal Communication	4.00	Fall Quarter 2012	B	

[View All](#) First 1 of 1 Last

COMS 213

COMS 213 - 4 Units Required (R169-30)

- Units: 4.00 required, 0.00 taken, 4.00 needed

Found in Student Center

	Requirement Satisfied
	In Progress
	(Icon Not In Use)
	Requirement Not Satisfied
	Exception Made

	Cal Poly Graded Course
	Course in Progress
	(Icon Not In Use)
	Transfer/Test/Other credit
	(Icon Not In Use)

Tentative Course Offerings (TCOs)

2018-2019 Tentative Course Offerings

COURSE	DESCRIPTION	F	W	SP
COMS 101	Public Speaking (4)	X	X	X
COMS 102	Principles of Speech Communication (4)	X	X	X
COMS 126	Argument and Advocacy (4)		X	X
COMS 145	Reasoning, Argumentation & Writing (4)		X	X
COMS 201	Advanced Public Speaking (4)	X		
COMS 208	Performance of Literature (4)		X	X
COMS 212	Interpersonal Communication (4)	X	X	X
COMS 213	Organizational Communication (4)	X	X	X
COMS 217	Small Group Communication (4)	X	X	X
COMS 218	Media, Self and Society		X	X
COMS 226	Applied Argumentation (4)			X
COMS 250	Forensic Activity (2)	X	X	X
COMS 270	Selected Topics	TBD		
COMS 301	Business and Professional Communication (4)	X		X
COMS 308	Group Performance of Literature (4)	X		X
COMS 311	Communication Theory (4)	X	X	X
COMS 312	Communication Research Methods (4)	X	X	X
COMS 315	Intergroup Communication Methods (4)			X
COMS 316	Intercultural Communication (4)	X	X	X
COMS 317	Technology and Human Communication (4)			X
COMS 319	Critical Cultural Studies and Communication (4)			X
COMS 322	Persuasion (4)	X	X	X
COMS 330	Classical Rhetorical Theory (4)	X	X	X
COMS 331	Contemporary Rhetorical Theory (4)			X

**Plan & update your major
classes accordingly**

**Don't miss out on your favorite
major electives!**

**Found at:
[cla.calpoly.edu/student-
resources](http://cla.calpoly.edu/student-resources)**

POLYPLANNER

Keeping your PolyPlan up to date each quarter is required
PolyPlanner is used:

- To map out your courses term by term
- By departments to help plan courses offerings

Login and review is required each quarter
even if no changes are needed

Fall Due Date: Oct 1st at 5 PM

Roadmap: Biological Sciences: Marine Biology and Conservation (2015-2017)

Effective: Summer 2015

[Expand All](#) / [Collapse All](#)

> MAJOR

> SUPPORT

> CONCENTRATION

> GENERAL EDUCATION

> FREE ELECTIVES



PolyPlan: My PolyPlan

PDF [icon] +

[Expand All](#) / [Collapse All](#)

▼ Fall 2016 [icon]

Add Course Add Message

BIO 160
Diversity and History of Life

ENGL 133
Writing & Rhetoric for English as a Second Language Students

HIST 208
Survey of California History

BIO 414
Evolution

▼ Winter 2017 [icon]

Add Course Add Message

BIO 161
Introduction to Cell and Molecular Biology

MATH 161

POLYPLAN SUBMISSION

- Submit your 2-year plan for feedback by Oct 19th
- cla.calpoly.edu/transfer-polyplan

How Future Registration Works:

Registration Appointments

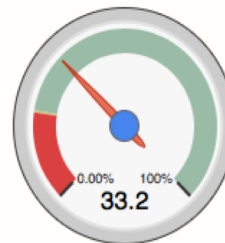
- Based on your academic progress
- Two weeks prior to registration, you can check your specific registration appointment in your Student Center

Winter 2019

WINTER 2019 REGISTRATION APPOINTMENT CATEGORIES	1ST ROUND (16 UNITS) START DATES	2ND ROUND (22 UNITS) START DATES
Special Exception and New Undergraduate Students	November 6	
Graduate Students	November 7	
Academic Progress Level IV (75.1% - 100%)	November 8-9	
Academic Progress Level III (45.1% - 75%)	November 13-14	
Academic Progress Level II (20.1% - 45%)	November 15-16	
Academic Progress Level I (0% - 20%)	November 26-28	
PolyPlanner Non-Compliant	November 29	

Found in PolyProfile

Academic Progress



Your Academic Progress is based on your course requirements only.

Expected Academic Progress (EAP) Level: 20%

Actual Academic Progress Level: 33.2%

Academic Progress: ON TRACK

Academic Standing: GOOD

Data last analyzed on 04/15/2016.

Make an appointment early to meet with a CLA Advisor to prepare for winter registration!

Plan last accessed in PolyPlanner on 08/14/2017

PolyPlanner Compliance Status - Fall Quarter 2017 Registration

✓ COMPLIANT

✓ Requirement 1: Login

Required window: 01/20/2017 - 04/12/2017

Last login: 03/06/2017

✓ Requirement 2: Planning

Required terms: Fall Quarter 2017, Winter Quarter 2018, Spring Quarter 2018

* Above data refreshes nightly, until 04/12/2017

[PolyPlanner FAQs](#)

Withdrawal Policy

- Students can drop a class without penalty through their Student Center until the 8th day instruction each quarter.
Fall 2018 deadline is October 1st.
- If you wish to withdraw from a class after the drop deadline, you must have **serious and compelling reasons**.



National Transfer Student Week

SAVE THE DATES

National Transfer Student Week

October 15 – 19, 2018

Monday, October 15

Bowling Bonanza:
Family Friendly

Tuesday, October 16
**Donuts with your
Academic Advisors**

Wednesday, October 17
**Transfer Professional
Panel: Launching Your
Career**

*Hosted by Cal Poly Advising and the
Association of Transfer Students*

CAL POLY 

Thursday, October 18

**Transfers Helping
Transfers:** Panel Discussion

Friday, October 19
Transfer Association:
Mix and Mingle

Find more information
and RSVP at [www.advising.
calpoly.edu/transferweek](http://www.advising.calpoly.edu/transferweek)

Welcome
to Cal
Poly!



If you forget anything we told you today.....

- Meet with a CLA Advisor Fall/Winter quarter
- Visit advising.calpoly.edu

CAL POLY
SAN LUIS OBISPO

Academic Advising
Student Success

Advising Home | Advising Centers | Curriculum and Flowcharts | Registration Calendars

Advising Centers

Registration Tools

Change of Major

First Year Students

Tutoring Study Session Supplemental Workshops

Transfer Students

Minors

Prospective Students

Cal Poly Lingo and Terms

FOR STUDENTS

- Academic Advising Syllabus
- AP/IB Credit
- assist.org handout
- Catalog
- Time Management Worksheets
- Transcripts

CAMPUS RESOURCES

- Campus Health & Wellbeing
- Career Services
- Dean of Students
- Disability Resource Center
- Financial Aid
- Housing
- Office of the Registrar
- Ombuds
- Parent & Family Programs
- Pre-Health Career Advising
- Study Abroad

Q&A

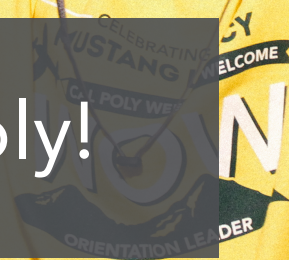


CLAAdivisingCenter

**Get updates, reminders of important deadlines,
registration & academic success tips**

CAL POLY

Welcome to Cal Poly!





CAL POLY

CAL POLY

Student Affairs
New Student & Transition Programs

orientation@calpoly.edu
open-house@calpoly.edu

805-756-2400

Bldg 52, Room E10

orientation.calpoly.edu