

Geographic Information Systems For Agriculture MINOR

An interdisciplinary program sponsored by two departments in the College of Agriculture, Food and Environment:

- BioResource and Agricultural Engineering
- Natural Resources Management and Environmental Sciences

New technologies of Geographic Information Systems (GIS), Global Positioning Systems (GPS), and orthophotography (uniform scale aerial photographs) are revolutionizing the management of resources.

There are great employment opportunities for those who understand the technologies and society will benefit from improved management decisions.

Students interested in this minor may come from any major on campus, with many coming from the following majors:

- Forestry and Natural Resources
- Crop Science
- Soil Science
- Landscape Architecture
- Agricultural Systems Management;
- BioResource and Agricultural Engineering
- Animal Science.

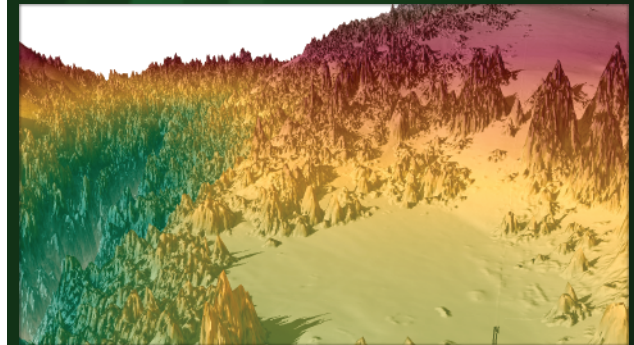


For information on “Geographic Information Systems for Agriculture” Minor check out:
<http://brae.calpoly.edu/department/gis.html>
and
<http://brae.calpoly.edu/policiesandforms.html>
and select GIS Minor Form

You may also contact the coordinators for the minor

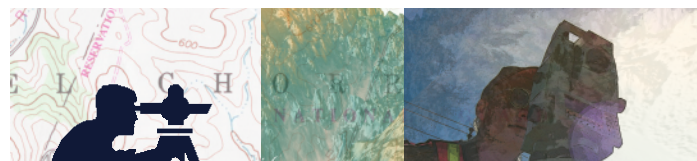


CAL POLY Geographic Information Systems for Agriculture Minor



California Polytechnic State University
San Luis Obispo, CA 93407
College of Agriculture, Food and Environmental Sciences

For more information:
Contact Mr. Tom Mastin
805.756.5391
tmastin@calpoly.edu
or
Dr. Samantha Gill
805.756.6205
sgill@calpoly.edu



Those taking the “Geographic Information Systems for Agriculture” Minor must take the core classes and then select one of two emphasis areas.

The emphasis area “Environmental Information” is for students interested in using GIS for managing or monitoring Environmental impacts.

The emphasis area “Precision Agriculture” is for students interested in GIS applications for farm management and crop monitoring.

Transfer students should meet with the coordinators for the minor to determine which transfer classes might count toward the minor.

CORE CLASSES

CAD (*Select one Set*)

BRAE 133 (1 Unit)
Engineering Design Graphics
BRAE 151 (1 Unit)
CAD for Agricultural Eng.

or

CE 112 (2 Units)
Design Principles
CE 113 (2 Units)
Computer Aided Drafting

SURVEYING & REMOTE SENSING

BRAE 239 (4 Units)
Engineering Surveying
BRAE 345 (3 Units)
Photogrammetry & Remote Sensing

GIS

NR 318 (3 Units)
Application in GIS
NR 418 (3 Units)
Applied GIS

Environmental Information Emphasis

BRAE 447 (4 Units)
Advanced Surveying w/ GIS Applications

NR 306 (4 Units)
Natural Resource Ecology

or

BIO 325
General Ecology
Engineering Design Graphics

Precision Agriculture Emphasis

CRSC 244 (4 Units)
Precision Farming

Any Two of the Following Classes

BRAE 447 (4 Units)
Advanced Surveying w/ GIS app.
CSRC 445 (4 Units)
Cropping Systems
HCS 410 (4 Units)
Crop Physiology
PPSC 405 (4 Units)
Advanced Weed Management
PPSC 431
Insect Pest Management
SS 433 (3 Units)
Land Use Planning
VGSC 423 (4 Units)
Advanced Vegetable Science