

The Cal Poly VPN (Virtual Private Network) – Apple iOS 6 or newer

To protect Cal Poly data and the campus network – while improving reliability and security of off-campus, remote access network connections – Cal Poly offers a Virtual Private Network (VPN).

This service is available to faculty and staff.

Getting Started

A Cal Poly VPN connection requires the following:

- A current, supported operating system
 - o Apple 10.7 or newer
 - o Apple iOS 6
 - o Windows 7

- A current, supported Web browser
 - o Internet Explorer 9
 - o Firefox 16 or newer
 - o Safari 6

- Up-to-date security and Java patches

- Administrative access or “elevated rights” to install software and complete configuration settings.

Please check with your [LAN Coordinator](#) before configuring the Cal Poly VPN on a Cal Poly computer.

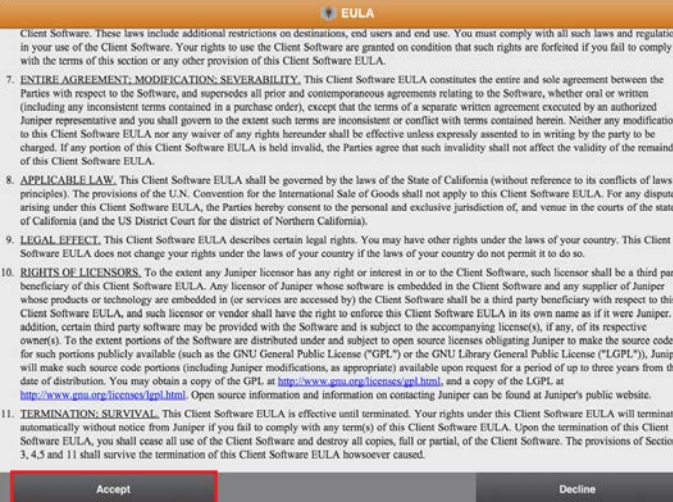
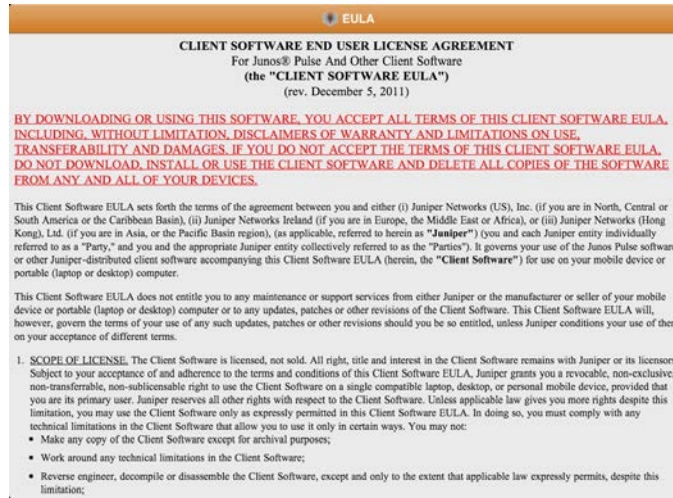
The process is outlined in this Step 1-2-3 guide for Apple iOS 6 or newer.

Step 1 – Connecting to the Cal Poly VPN

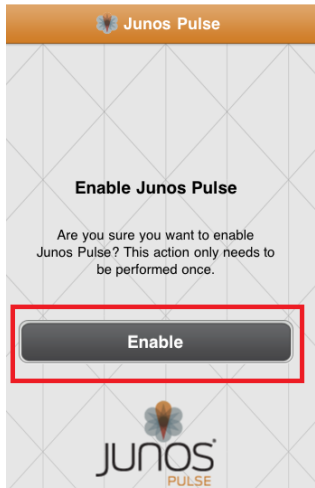
1. Visit the App Store, search for **Junos Pulse**. Download and launch the free application.



2. You will be prompted to read and accept the license agreement – tap “Accept”.



3. Tap “Enable” to continue with installation:



4. Configure the Cal Poly VPN connection.

Tap on the “>”



Enter the information show below – including your username (e.g. jmustang) – then tap “Save”.



5. Tap “Connect” to access the Cal Poly VPN.



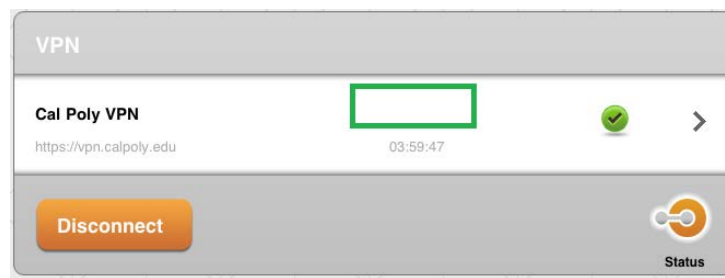
At the Cal Poly Portal prompt, enter your Cal Poly username, password and click “Login”.



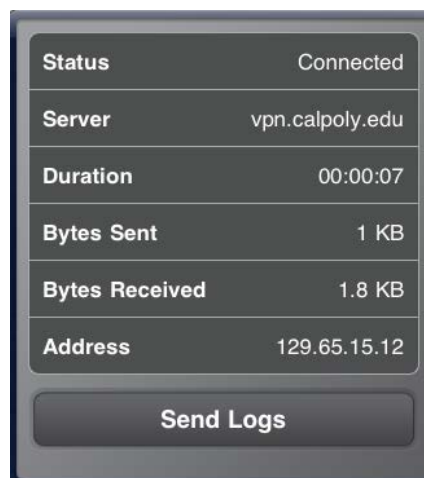
The following Cal Poly VPN screen will appear ...



Then the Cal Poly VPN “you’re connected” screen will appear, with your Cal Poly email address displayed (in the green box area).



Tap on “Status” to see details about the Cal Poly VPN session:



*Note: the assigned IP will be within the 129.65.15 subnet.
You may continue with accessing Cal Poly resources.*

Step 2 – Accessing Cal Poly Applications and Resources

You are now securely connected to Cal Poly’s network and may access applications and resources, as if you were on campus with a “calpoly.edu” network address.

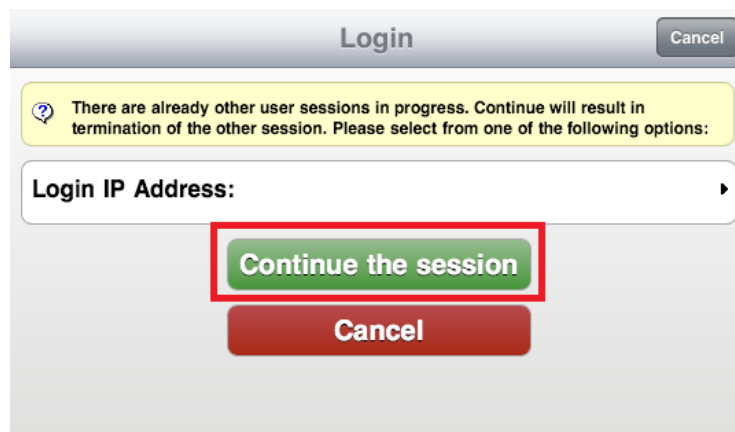
Examples include:

- Applications (e.g. Advance Web, Windows Terminal Servers and Microsoft Office)
- File Servers (e.g. Active Directory “U” and “V” drives)
- Devices (e.g. networked laser printers)

Specific access, application and technical questions should be directed to your [LAN Coordinator](#).

Step 3 – Managing Your Cal Poly VPN Connection

The Cal Poly VPN allows only one session at a time – if you see the following message, click “Continue the session” to disconnect the other session.



To exit your Cal Poly VPN session, tap “Disconnect”.

