

The Cal Poly VPN (Virtual Private Network) – Windows 7

To protect Cal Poly data and the campus network – while improving reliability and security of off-campus, remote access network connections – Cal Poly offers a Virtual Private Network (VPN).

This service is available to faculty and staff.

Getting Started

A Cal Poly VPN connection requires the following:

- A current, supported operating system
 - o Apple 10.7 or newer
 - o Apple iOS 6
 - o Windows 7

- A current, supported Web browser
 - o Internet Explorer 9
 - o Firefox 16 or newer
 - o Safari 6

- Up-to-date security and Java patches

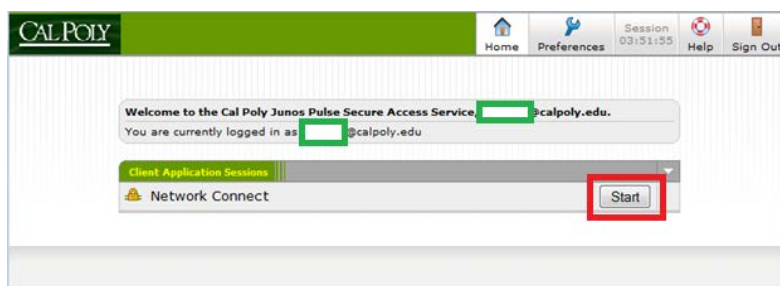
- Administrative access or “elevated rights” to install software and complete configuration settings.

Please check with your [LAN Coordinator](#) before configuring the Cal Poly VPN on a Cal Poly computer.

The process is outlined in this Step 1-2-3 guide for Windows 7.

Step 1 – Connecting to the Cal Poly VPN

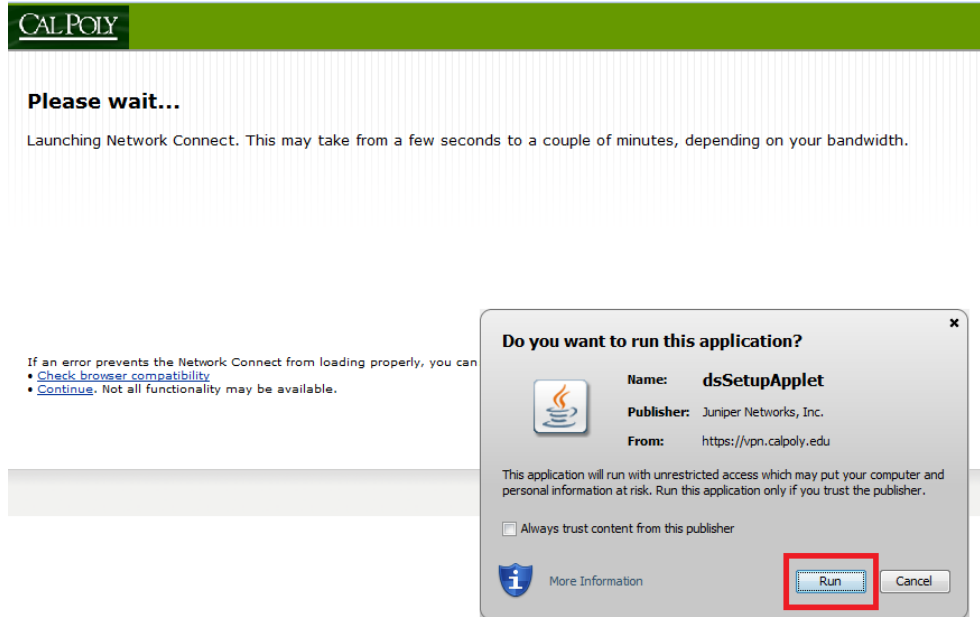
1. Visit <https://vpn.calpoly.edu>
2. At the Cal Poly Portal prompt, enter your Cal Poly username, password and click “Login”.
3. The Cal Poly VPN screen will appear with your Cal Poly email address displayed.



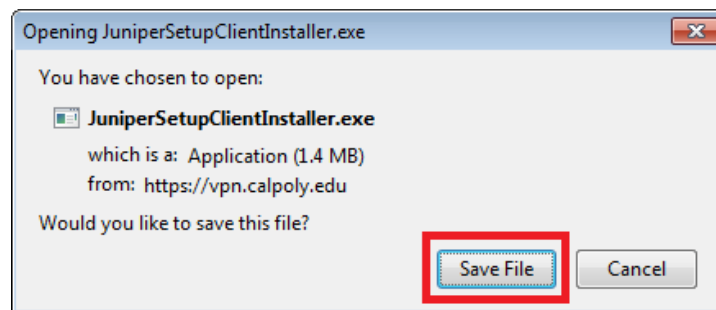
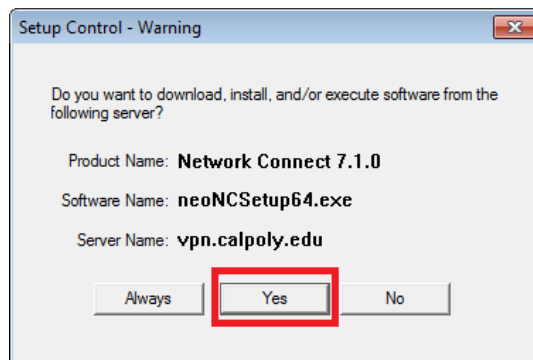
Click on the “Start” button.

- The following screen will appear, prompting you to run the Java client installation. You must click on “Run” to complete the Cal Poly VPN configuration.

Note: Administrative access is required to complete these steps.

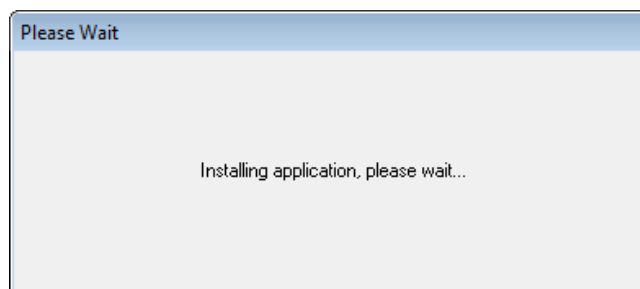
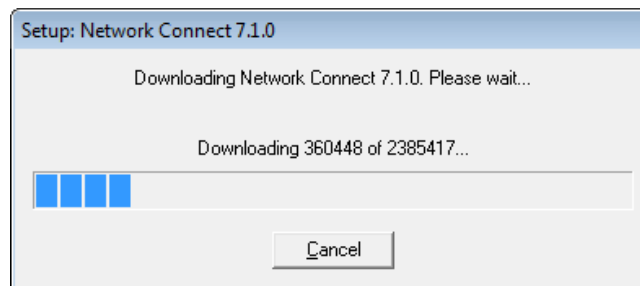
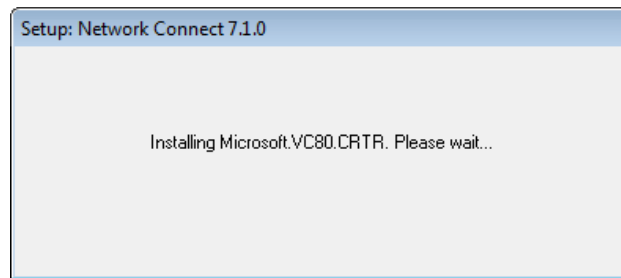
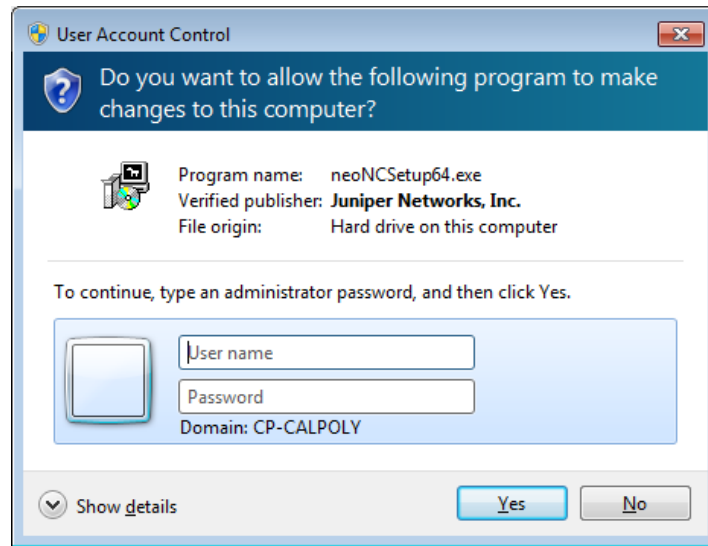


Depending on your computer’s configuration, you will see one of the following dialog boxes:



Click “Yes” or “Save File” – then run the Juniper Setup installation program.

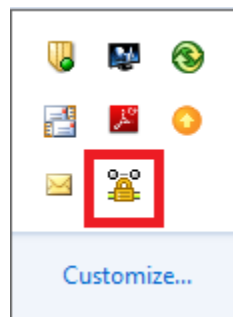
As the installation proceeds, different dialog boxes will appear – along with prompts for administrative access. For example:



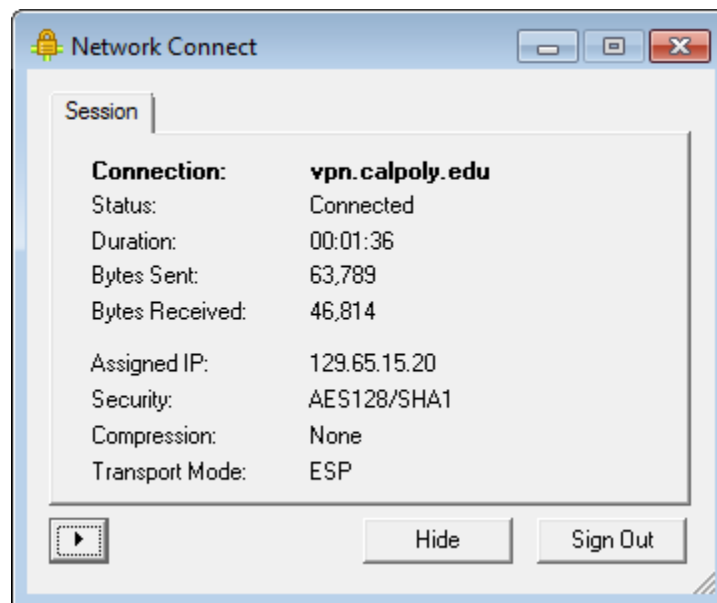
- When the installation is completed, click on "Start".



After the VPN tunnel is established, the Cal Poly VPN Network Connect icon will appear in the Windows status bar (click on "Show Hidden Icons").



If you double-click on the icon, you'll see Cal Poly VPN session information:



Note: the assigned IP will be within the 129.65.15 subnet.

You may minimize this window and continue with accessing Cal Poly resources.

Step 2 – Accessing Cal Poly Applications and Resources

You are now securely connected to Cal Poly’s network and may access applications and resources, as if you were on campus with a “calpoly.edu” network address.

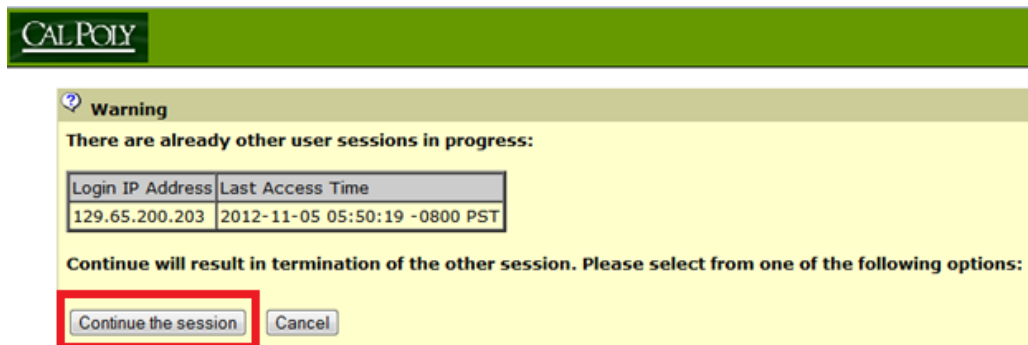
Examples include:

- Applications (e.g. Advance Web, Windows Terminal Servers and Microsoft Office)
- File Servers (e.g. Active Directory “U” and “V” drives)
- Devices (e.g. networked laser printers)

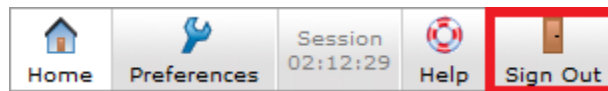
Specific access, application and technical questions should be directed to your [LAN Coordinator](#).

Step 3 – Managing Your Cal Poly VPN Connection

The Cal Poly VPN allows only one session at a time – if you see the following message, click “Continue the session” to disconnect the other session.



To exit your Cal Poly VPN session, click on “Sign Out” – then exit your Web browser.



NOTE: you must exit your Web browser before attempting another Cal Poly VPN session. If you don’t, an error message will appear – for example:

