

Connecting to Advance-RDS (Remote Desktop Services) – Apple iOS 6 or newer

To protect Cal Poly data and the campus network – while improving reliability and security of off-campus, remote access network connections – Cal Poly offers a Virtual Private Network (VPN).

The Cal Poly VPN is required to access Advance-RDS from off-campus.

This service is available to Advancement managers, officers and staff.

Getting Started

Accessing Advance-RDS on an iOS device requires the following:

- A current, supported operating system — Apple iOS 6
- A current, supported Remote Desktop Protocol (RDP) client — PocketCloud Advanced

Please check with your [LAN Coordinator](#) before configuring these on a Cal Poly iOS device.

To access Advance-RDS from off-campus you MUST:

- 1. Connect to the Cal Poly VPN**
- 2. Then launch PocketCloud Advanced**

If your iOS device hangs when trying to connect to the Cal Poly VPN – you'll need to reboot the device.

Step 1 – Connect to the Cal Poly VPN

1. Complete the steps outlined in the “Cal Poly VPN – iOS 6 or Newer” document, located at http://www.advancement.calpoly.edu/content/apps/advance_web

Estimated time is 5-8 minutes to complete.



Step 2 – Install the Remote Desktop Protocol (RDP) App

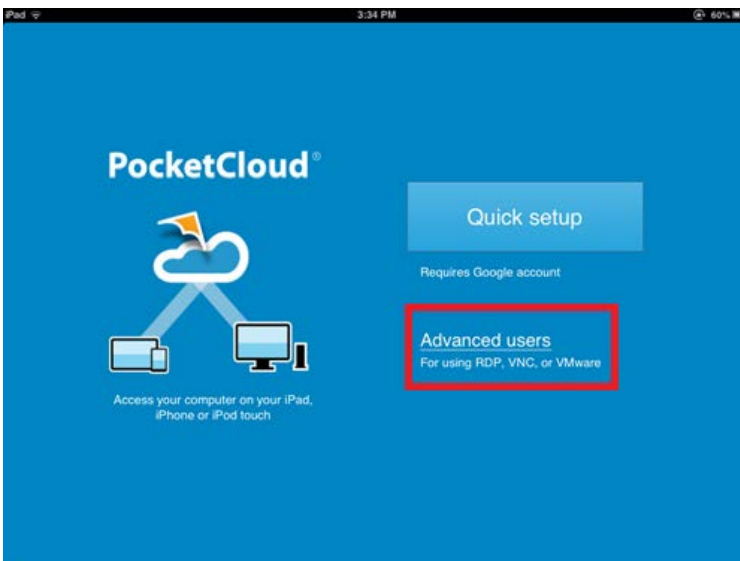
Visit the App Store, search for **PocketCloud Remote Desktop – RDP / VNC**.
Download the free application.



1. When you launch the application, you will be prompted to provide usage statistics – tap “No”.

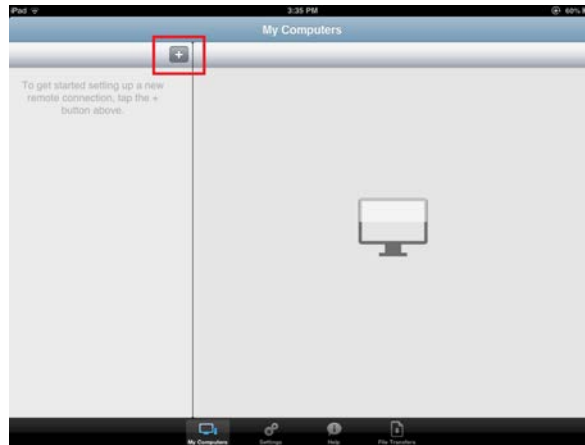


2. Tap “Advanced users” to continue with installation:

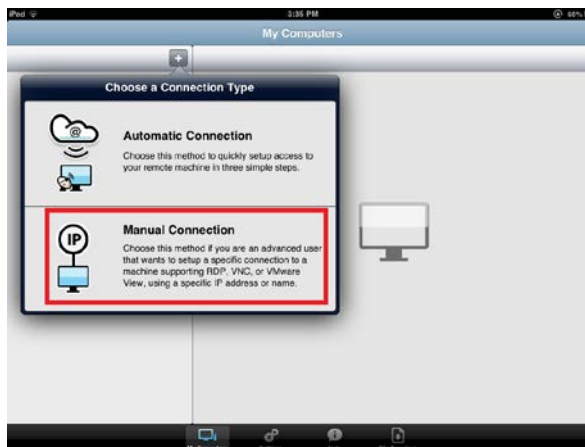


3. Configure the Advance-RDS connection.

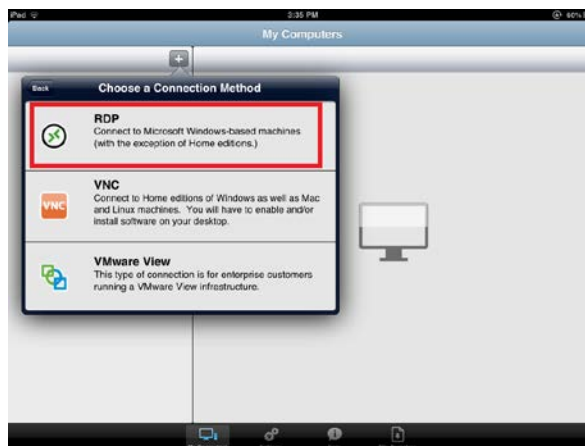
Tap on the “+”



Tap on “Manual Connection”



Tap on “RDP”



Enter "Advance-RDS" (without the quotes), then tap "Save"

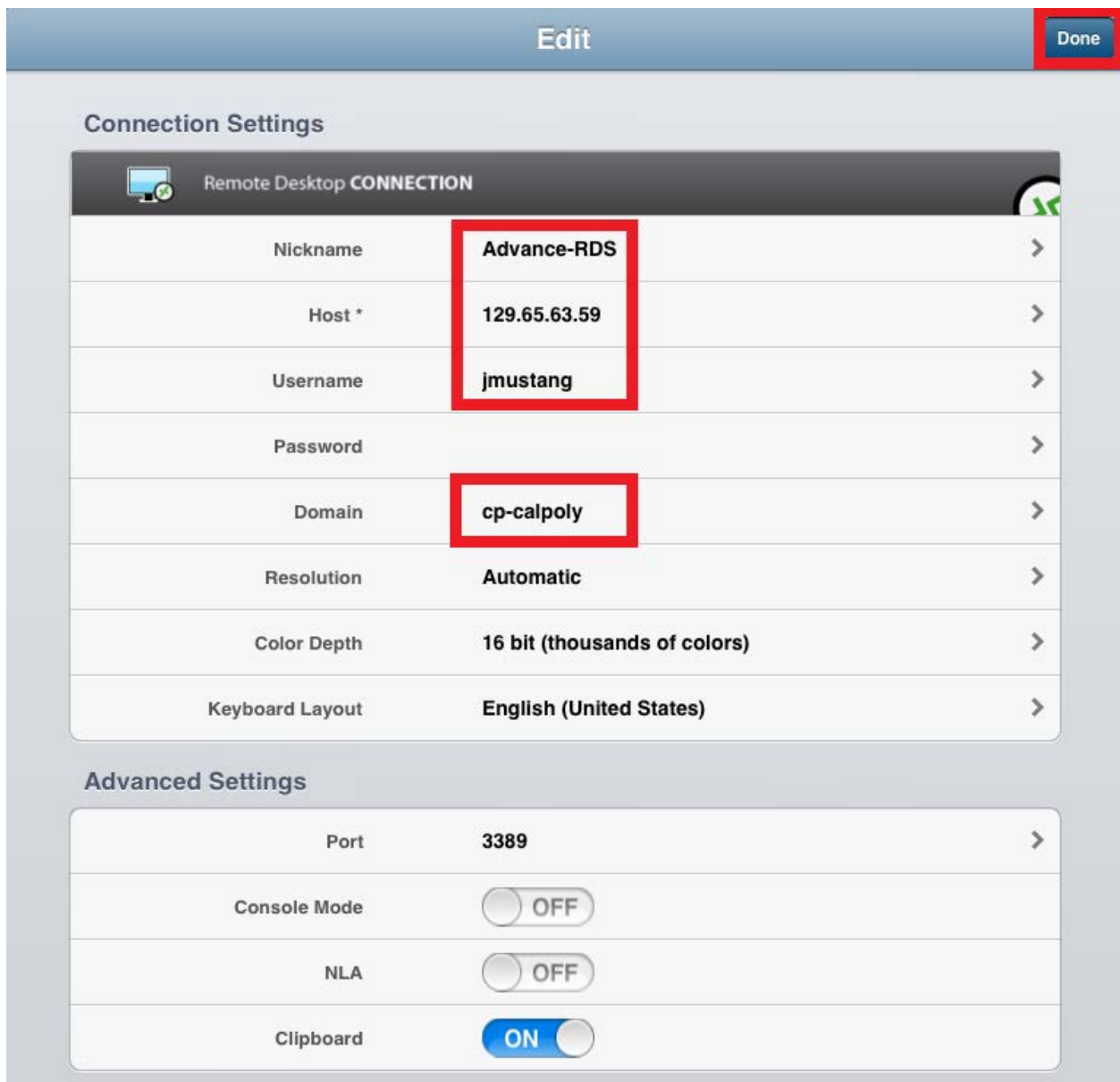


Cancel Edit Nickname Save

Advance-RDS

Nickname is the name of this connection and will appear on the "My Computers" page

Enter the information for the other fields, then tap "Done"
(please be sure to use your username, not jmustang)



Edit Done

Connection Settings

Remote Desktop CONNECTION

Nickname	Advance-RDS	>
Host *	129.65.63.59	>
Username	jmustang	>
Password		>
Domain	cp-calpoly	>
Resolution	Automatic	>
Color Depth	16 bit (thousands of colors)	>
Keyboard Layout	English (United States)	>

Advanced Settings

Port	3389	>
Console Mode	<input type="checkbox"/> OFF	
NLA	<input type="checkbox"/> OFF	
Clipboard	<input checked="" type="checkbox"/> ON	

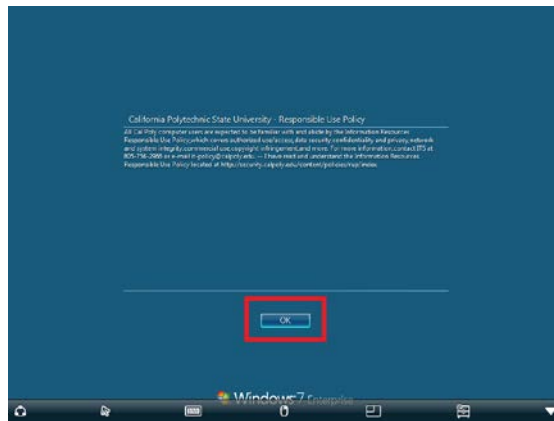
Step 3 – Connect to Advance-RDS

*NOTE: if you are off-campus, you **MUST** connect to the Cal Poly VPN first to access Advance-RDS*

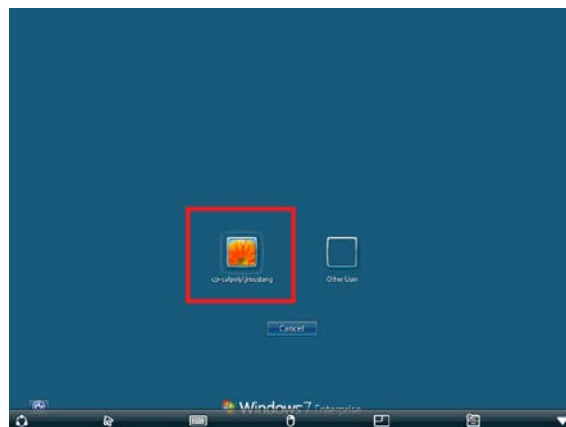
Launch PocketCloud and tap “Connect”



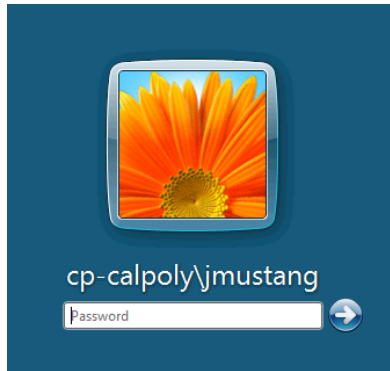
The Cal Poly Responsible Use Policy screen will appear — tap “OK”



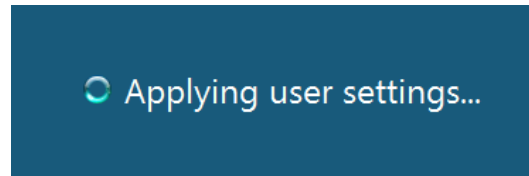
Tap on your user icon (e.g. “jmustang” as shown below)



Enter your Cal Poly Portal password and tap “→”



The Windows login sequence will begin ...



You are now securely connected to Cal Poly’s network and Advance-RDS. You may access applications and resources, as if you were on campus with a “calpoly.edu” network address.

Examples include:

- Applications (e.g. Advance Web and Microsoft Office)
- File Servers (e.g. Active Directory “U” and “V” drives)

Specific access, application and technical questions should be directed to your [LAN Coordinator](#).

PocketCloud Toolbar Reference

